

Datasheet for ABIN2856002

anti-IPMK antibody**3** Images[Go to Product page](#)

Overview

Quantity:	100 µL
Target:	IPMK
Reactivity:	Human
Host:	Rabbit
Clonality:	Polyclonal
Conjugate:	This IPMK antibody is un-conjugated
Application:	Western Blotting (WB), Immunofluorescence (IF), Immunohistochemistry (Paraffin-embedded Sections) (IHC (p)), Immunocytochemistry (ICC)

Product Details

Immunogen:	Recombinant protein encompassing a sequence within the center region of human IPMK. The exact sequence is proprietary.
Isotype:	IgG
Cross-Reactivity:	Human, Mouse
Characteristics:	Rabbit Polyclonal antibody to IPMK (inositol polyphosphate multikinase) IPMK antibody [N1C2]
Purification:	Purified by antigen-affinity chromatography.
Grade:	KO Validated

Target Details

Target:	IPMK
---------	------

Target Details

Alternative Name:	inositol polyphosphate multikinase (IPMK Products)
Background:	<p>This gene encodes a member of the inositol phosphokinase family. The encoded protein has 3-kinase, 5-kinase and 6-kinase activities on phosphorylated inositol substrates. The encoded protein plays an important role in the biosynthesis of inositol 1,3,4,5,6-pentakisphosphate, and has a preferred 5-kinase activity. This gene may play a role in nuclear mRNA export.</p> <p>Pseudogenes of this gene are located on the long arm of chromosome 13 and the short arm of chromosome 19.</p> <p>Cellular Localization: Nucleus</p>
Molecular Weight:	47 kDa
Gene ID:	253430
UniProt:	Q8NFU5
Pathways:	Tube Formation

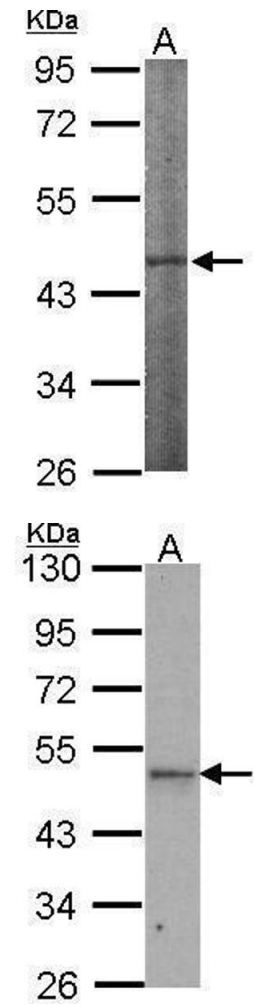
Application Details

Application Notes:	WB: 1:500-1:3000. ICC/IF: 1:100-1:1000. Optimal dilutions/concentrations should be determined by the researcher. Not tested in other applications.
Comment:	Positive Control: Mouse brain Validation: KO/KD, Overexpression
Restrictions:	For Research Use only

Handling

Format:	Liquid
Concentration:	1.34 mg/mL
Buffer:	1XPBS pH 7, 20 % Glycerol, 0.025 % ProClin 300
Preservative:	ProClin
Precaution of Use:	This product contains ProClin: a POISONOUS AND HAZARDOUS SUBSTANCE which should be handled by trained staff only.
Storage:	4 °C,-20 °C
Storage Comment:	Store as concentrated solution. Centrifuge briefly prior to opening vial. For short-term storage

(1-2 weeks), store at 4°C. For long-term storage, aliquot and store at -20°C or below. Avoid multiple freeze-thaw cycles.

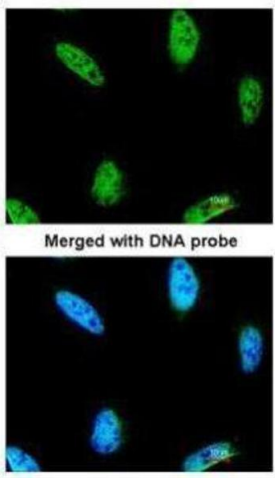


Western Blotting

Image 1. WB Image Sample (50 ug of whole cell lysate) A: Mouse brain 10% SDS PAGE antibody diluted at 1:1000

Western Blotting

Image 2. WB Image Sample (30 ug of whole cell lysate) A: H1299 10% SDS PAGE IPMK antibody antibody diluted at 1:1000



Immunofluorescence

Image 3. ICC/IF Image Immunofluorescence analysis of paraformaldehyde-fixed HeLa, using IPMK, antibody at 1:200 dilution.