

Datasheet for ABIN2856003

anti-MOK antibody

3 Images

[Go to Product page](#)

Overview

Quantity:	100 µL
Target:	MOK
Reactivity:	Human
Host:	Rabbit
Clonality:	Polyclonal
Conjugate:	This MOK antibody is un-conjugated
Application:	Western Blotting (WB), Immunofluorescence (IF), Immunocytochemistry (ICC), Immunohistochemistry (Paraffin-embedded Sections) (IHC (p))

Product Details

Immunogen:	Recombinant protein encompassing a sequence within the center region of human MOK. The exact sequence is proprietary.
Isotype:	IgG
Cross-Reactivity:	Human
Characteristics:	Rabbit Polyclonal antibody to MOK (renal tumor antigen) MOK antibody [N2C3]
Purification:	Purified by antigen-affinity chromatography.

Target Details

Target:	MOK
Alternative Name:	MOK protein kinase (MOK Products)

Target Details

Background: Able to phosphorylate several exogenous substrates and to undergo autophosphorylation.

Cellular Localization: Cytoplasm

Molecular Weight: 48 kDa

Gene ID: 5891

UniProt: [Q9UQ07](#)

Pathways: [S100 Proteins](#)

Application Details

Application Notes: WB: 1:500-1:3000. ICC/IF: 1:100-1:1000. IHC-P: 1:100-1:1000. Optimal dilutions/concentrations should be determined by the researcher. Not tested in other applications.

Comment: Positive Control: 293T

Restrictions: For Research Use only

Handling

Format: Liquid

Concentration: 0.15 mg/mL

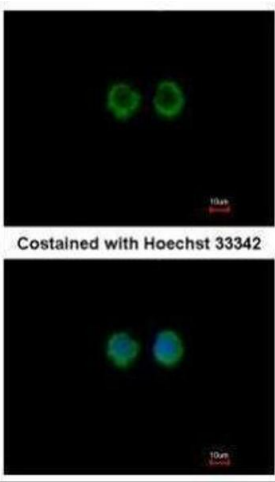
Buffer: 0.1M Tris-Glycine (pH 7), 10 % Glycerol, 0.01 % Thimerosal

Preservative: Thimerosal (Merthiolate)

Precaution of Use: This product contains Thimerosal (Merthiolate): a POISONOUS AND HAZARDOUS SUBSTANCE which should be handled by trained staff only.

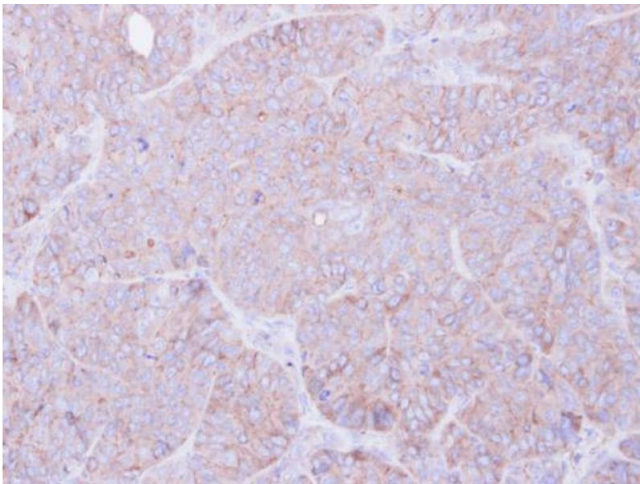
Storage: 4 °C, -20 °C

Storage Comment: Store as concentrated solution. Centrifuge briefly prior to opening vial. For short-term storage (1-2 weeks), store at 4°C. For long-term storage, aliquot and store at -20°C or below. Avoid multiple freeze-thaw cycles.



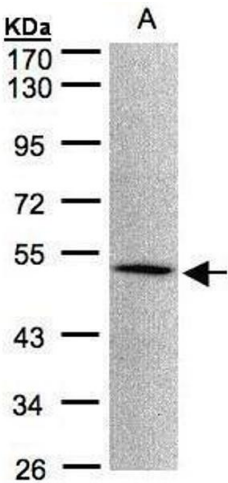
Immunofluorescence

Image 1. ICC/IF Image Immunofluorescence analysis of methanol-fixed A549, using RAGE, antibody at 1:100 dilution.



Immunohistochemistry

Image 2. IHC-P Image Immunohistochemical analysis of paraffin-embedded SW480 xenograft, using RAGE, antibody at 1:100 dilution.



Western Blotting

Image 3. WB Image Sample(30 µg of whole cell lysate) A:293T 10% SDS PAGE antibody diluted at 1:1000