

Datasheet for ABIN2856007

anti-TOPBP1 antibody (Internal Region)[Go to Product page](#)**1** Image

Overview

Quantity:	100 µL
Target:	TOPBP1
Binding Specificity:	Internal Region
Reactivity:	Human
Host:	Rabbit
Clonality:	Polyclonal
Conjugate:	This TOPBP1 antibody is un-conjugated
Application:	Western Blotting (WB)

Product Details

Immunogen:	Recombinant protein encompassing a sequence within the center region of human TOPBP1. The exact sequence is proprietary.
Isotype:	IgG
Characteristics:	Rabbit Polyclonal antibody to TopBP1 (topoisomerase (DNA) II binding protein 1) TopBP1 antibody [C1C2], Internal
Purification:	Purified by antigen-affinity chromatography.

Target Details

Target:	TOPBP1
Alternative Name:	TopBP1 (TOPBP1 Products)

Target Details

Background: This gene encodes a binding protein which interacts with the C-terminal region of topoisomerase II beta. This interaction suggests a supportive role for this protein in the catalytic reactions of topoisomerase II beta through transient breakages of DNA strands.

Molecular Weight: 171 kDa

Gene ID: 11073

Pathways: [Chromatin Binding](#)

Application Details

Application Notes: Suggested dilution Reference Western blot 1:500-1:3000* Not tested in other applications.
Optimal dilutions/concentrations should be determined by the researcher.Suggested dilutionReferenceWestern blot1:500-1:3000

Comment: Positive Control: H1299 , HCT116

Restrictions: For Research Use only

Handling

Format: Liquid

Concentration: 1.01 mg/mL

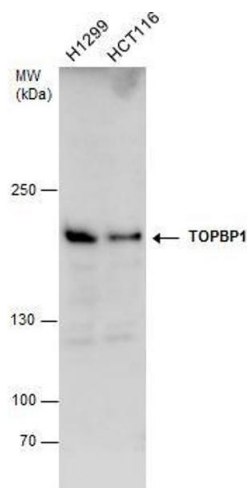
Buffer: 1XPBS, 1 % BSA, 20 % Glycerol (pH 7). 0.01 % Thimerosal was added as a preservative.

Preservative: Thimerosal (Merthiolate)

Precaution of Use: This product contains Thimerosal (Merthiolate): a POISONOUS AND HAZARDOUS SUBSTANCE which should be handled by trained staff only.

Storage: -20 °C

Storage Comment: Keep as concentrated solution. Aliquot and store at -20°C or below. Avoid multiple freeze-thaw cycles.



Western Blotting

Image 1. WB Image TOPBP1 antibody detects TOPBP1 protein by western blot analysis. Various whole cell extracts (30 µg) were separated by 5% SDS-PAGE, and the membrane was blotted with TOPBP1 antibody, diluted at a dilution of 1:500.