

Datasheet for ABIN2856009

anti-UGDH antibody

4 Images

[Go to Product page](#)

Overview

Quantity:	100 µL
Target:	UGDH
Reactivity:	Human
Host:	Rabbit
Clonality:	Polyclonal
Conjugate:	This UGDH antibody is un-conjugated
Application:	Western Blotting (WB), Immunofluorescence (IF), Immunohistochemistry (Paraffin-embedded Sections) (IHC (p)), Immunocytochemistry (ICC)

Product Details

Immunogen:	Recombinant protein encompassing a sequence within the center region of human UGDH. The exact sequence is proprietary.
Isotype:	IgG
Cross-Reactivity:	Human, Mouse, Rat
Characteristics:	Rabbit Polyclonal antibody to UGDH (UDP-glucose 6-dehydrogenase) UGDH antibody
Purification:	Purified by antigen-affinity chromatography.

Target Details

Target:	UGDH
Alternative Name:	UDP-glucose 6-dehydrogenase (UGDH Products)

Target Details

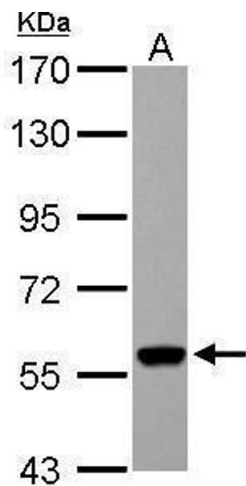
Background:	The protein encoded by this gene converts UDP-glucose to UDP-glucuronate and thereby participates in the biosynthesis of glycosaminoglycans such as hyaluronan, chondroitin sulfate, and heparan sulfate. These glycosylated compounds are common components of the extracellular matrix and likely play roles in signal transduction, cell migration, and cancer growth and metastasis. The expression of this gene is up-regulated by transforming growth factor beta and down-regulated by hypoxia.
Molecular Weight:	55 kDa
Gene ID:	7358
UniProt:	O60701
Pathways:	Glycosaminoglycan Metabolic Process

Application Details

Application Notes:	WB: 1:1000-1:10000. IHC-P: 1:100-1:1000. Optimal dilutions/concentrations should be determined by the researcher. Not tested in other applications.
Comment:	Positive Control: mouse liver , Rat liver , UGDH-transfected 293T Validation: Orthogonal, Overexpression
Restrictions:	For Research Use only

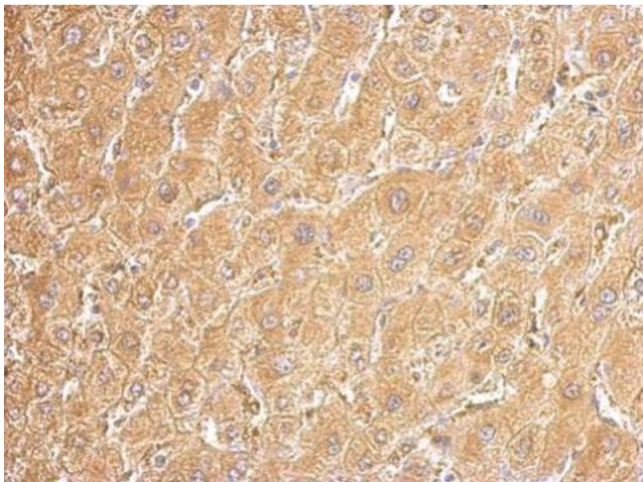
Handling

Format:	Liquid
Concentration:	1.36 mg/mL
Buffer:	1XPBS (pH 7), 20 % Glycerol, 0.025 % ProClin 300
Preservative:	ProClin
Precaution of Use:	This product contains ProClin: a POISONOUS AND HAZARDOUS SUBSTANCE which should be handled by trained staff only.
Storage:	4 °C,-20 °C
Storage Comment:	Store as concentrated solution. Centrifuge briefly prior to opening vial. For short-term storage (1-2 weeks), store at 4°C. For long-term storage, aliquot and store at -20°C or below. Avoid multiple freeze-thaw cycles.



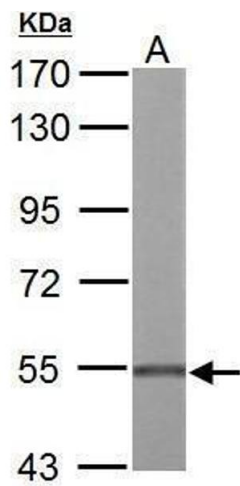
Western Blotting

Image 1. WB Image UGDH antibody detects UGDH protein by Western blot analysis. A. 30 μ g HepG2 whole cell lysate/extract 7.5 % SDS-PAGE UGDH antibody , dilution: 1:10000



Immunohistochemistry

Image 2. IHC-P Image UGDH antibody detects UGDH protein at cytosol on human hepatoma by immunohistochemical analysis. Sample: Paraffin-embedded hepatoma tissue. UGDH antibody , dilution: 1:500.



Western Blotting

Image 3. WB Image UGDH antibody detects UGDH protein by Western blot analysis. A. 50 μ g Rat liver lysate/extract 7.5 % SDS-PAGE UGDH antibody , dilution: 1:2000

Please check the [product details page](#) for more images. Overall 4 images are available for ABIN2856009.