

Datasheet for ABIN2856010

anti-TULP3 antibody**2** Images[Go to Product page](#)

Overview

Quantity:	100 µL
Target:	TULP3
Reactivity:	Human
Host:	Rabbit
Clonality:	Polyclonal
Conjugate:	This TULP3 antibody is un-conjugated
Application:	Western Blotting (WB), Immunofluorescence (IF), Immunocytochemistry (ICC)

Product Details

Immunogen:	Recombinant protein encompassing a sequence within the center region of human TULP3. The exact sequence is proprietary.
Isotype:	IgG
Cross-Reactivity:	Human
Characteristics:	Rabbit Polyclonal antibody to TULP3 (tubby like protein 3) TULP3 antibody [N2C3]
Purification:	Purified by antigen-affinity chromatography.

Target Details

Target:	TULP3
Alternative Name:	tubby like protein 3 (TULP3 Products)

Target Details

Background: This gene encodes a member of the tubby-like protein (TULP) family. Members of this family have been identified in plants, vertebrates, and invertebrates, and they share a conserved C-terminal region of approximately 200 amino acid residues. The human and mouse TULP3 proteins share 69 % amino acid sequence identity, with higher identity at the N and C termini than in the central region.

Molecular Weight: 50 kDa

Gene ID: 7289

UniProt: [O75386](#)

Pathways: [Regulation of G-Protein Coupled Receptor Protein Signaling](#), [Tube Formation](#)

Application Details

Application Notes: WB: 1:500-1:3000. ICC/IF: 1:100-1:1000. Optimal dilutions/concentrations should be determined by the researcher. Not tested in other applications.

Comment: Positive Control: HepG2

Restrictions: For Research Use only

Handling

Format: Liquid

Concentration: 0.47 mg/mL

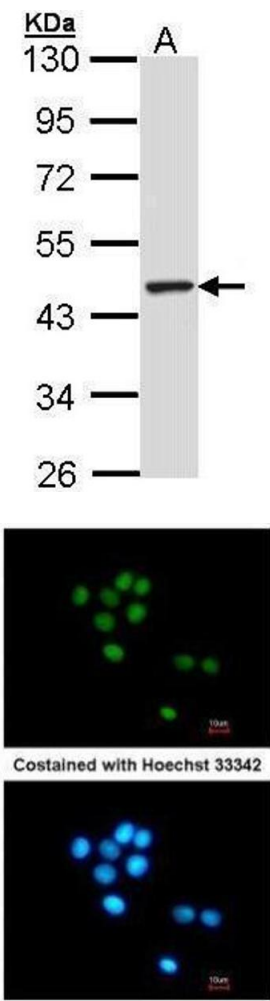
Buffer: 0.1M Tris-Glycine (pH 7), 10 % Glycerol, 0.01 % Thimerosal

Preservative: Thimerosal (Merthiolate)

Precaution of Use: This product contains Thimerosal (Merthiolate): a POISONOUS AND HAZARDOUS SUBSTANCE which should be handled by trained staff only.

Storage: 4 °C, -20 °C

Storage Comment: Store as concentrated solution. Centrifuge briefly prior to opening vial. For short-term storage (1-2 weeks), store at 4°C. For long-term storage, aliquot and store at -20°C or below. Avoid multiple freeze-thaw cycles.



Western Blotting

Image 1. WB Image Sample (30 ug of whole cell lysate) A: Hep G2 , 10% SDS PAGE antibody diluted at 1:1000

Immunofluorescence

Image 2. ICC/IF Image Immunofluorescence analysis of methanol-fixed HepG2, using TULP3, antibody at 1:200 dilution.