

Datasheet for ABIN2856012

anti-LUZP4 antibody**2** Images[Go to Product page](#)

Overview

Quantity:	100 µL
Target:	LUZP4
Reactivity:	Human
Host:	Rabbit
Clonality:	Polyclonal
Conjugate:	This LUZP4 antibody is un-conjugated
Application:	Western Blotting (WB), Immunocytochemistry (ICC), Immunofluorescence (IF)

Product Details

Immunogen:	Recombinant protein encompassing a sequence within the center region of human LUZP4. The exact sequence is proprietary.
Isotype:	IgG
Cross-Reactivity:	Human
Characteristics:	Rabbit Polyclonal antibody to LUZP4 (leucine zipper protein 4) LUZP4 antibody [N1C3]
Purification:	Purified by antigen-affinity chromatography.

Target Details

Target:	LUZP4
Alternative Name:	leucine zipper protein 4 (LUZP4 Products)

Target Details

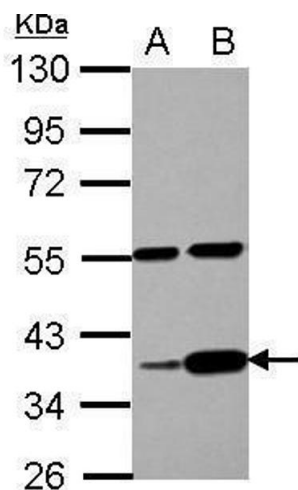
Background:	Cellular Localization: Nucleus
Molecular Weight:	36 kDa
Gene ID:	51213
UniProt:	Q9P127

Application Details

Application Notes:	WB: 1:500-1:3000. ICC/IF: 1:100-1:1000. Optimal dilutions/concentrations should be determined by the researcher. Not tested in other applications.
Comment:	Positive Control: PC-3 , U87-MG
Restrictions:	For Research Use only

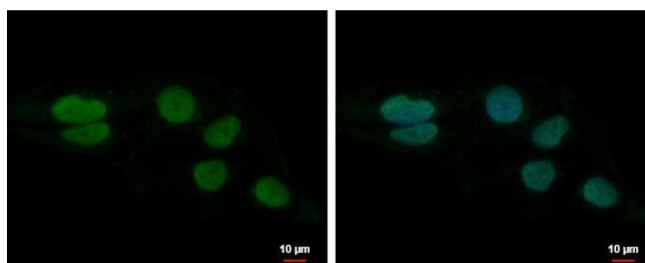
Handling

Format:	Liquid
Concentration:	1 mg/mL
Buffer:	1XPBS (pH 7), 1 % BSA, 20 % Glycerol, 0.01 % Thimerosal
Preservative:	Thimerosal (Merthiolate)
Precaution of Use:	This product contains Thimerosal (Merthiolate): a POISONOUS AND HAZARDOUS SUBSTANCE which should be handled by trained staff only.
Storage:	4 °C,-20 °C
Storage Comment:	Store as concentrated solution. Centrifuge briefly prior to opening vial. For short-term storage (1-2 weeks), store at 4°C. For long-term storage, aliquot and store at -20°C or below. Avoid multiple freeze-thaw cycles.



Western Blotting

Image 1. WB Image Sample (30 ug of whole cell lysate) A: PC-3 B: U87-MG 10% SDS PAGE antibody diluted at 1:1000



Immunofluorescence

Image 2. ICC/IF Image LUZP4 antibody [N1C3] detects LUZP4 protein at nucleus by immunofluorescent analysis. Sample: NT2D1 cells were fixed in 4% paraformaldehyde at RT for 15 min. Green: LUZP4 protein stained by LUZP4 antibody [N1C3] , diluted at 1:500. Blue: Hoechst 33342 staining. Scale bar = 10 μm.