



[Go to Product page](#)

Datasheet for ABIN2856013
anti-Calceurin A antibody (Center)

1 Image

Overview

Quantity:	100 µL
Target:	Calceurin A (CAN)
Binding Specificity:	Center
Reactivity:	Human
Host:	Rabbit
Clonality:	Polyclonal
Conjugate:	This Calceurin A antibody is un-conjugated
Application:	Immunocytochemistry (ICC), Immunofluorescence (IF)

Product Details

Immunogen:	Recombinant protein encompassing a sequence within the center region of human Calceurin A. The exact sequence is proprietary.
Isotype:	IgG
Characteristics:	Rabbit Polyclonal antibody to Calceurin A (protein phosphatase 3, catalytic subunit, alpha isozyme) Calceurin A antibody
Purification:	Purified by antigen-affinity chromatography.

Target Details

Target:	Calceurin A (CAN)
Alternative Name:	Calceurin A (CAN Products)

Target Details

Background: Cellular Localization: Nucleus (By similarity)

Molecular Weight: 59 kDa

Gene ID: 5530

Application Details

Application Notes: Suggested dilution Reference ICC/IF 1:100-1:1000* Not tested in other applications. *Optimal dilutions/concentrations should be determined by the researcher.Suggested dilutionReferenceICC/IF1:100-1:1000*

Restrictions: For Research Use only

Handling

Format: Liquid

Concentration: 1 mg/mL

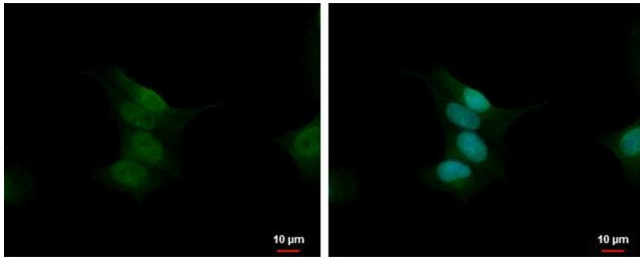
Buffer: 1XPBS, 20 % Glycerol (pH 7). 0.01 % Thimerosal was added as a preservative.

Preservative: Thimerosal (Merthiolate)

Precaution of Use: This product contains Thimerosal (Merthiolate): a POISONOUS AND HAZARDOUS SUBSTANCE which should be handled by trained staff only.

Storage: -20 °C

Storage Comment: Keep as concentrated solution. Aliquot and store at -20°C or below. Avoid multiple freeze-thaw cycles.



Immunofluorescence

Image 1. ICC/IF Image Calcineurin A antibody detects Calcineurin A protein at nucleus by immunofluorescent analysis. Sample: SKNSH cells were fixed in 4% paraformaldehyde at RT for 15 min. Green: Calcineurin A protein stained by Calcineurin A antibody , diluted at 1:500. Blue: Hoechst 33342 staining.