



Datasheet for ABIN2856015  
**anti-CDC34 antibody**



[Go to Product page](#)

3 Images

Overview

Quantity:	100 µL
Target:	CDC34
Reactivity:	Human
Host:	Rabbit
Clonality:	Polyclonal
Conjugate:	This CDC34 antibody is un-conjugated
Application:	Western Blotting (WB), Immunofluorescence (IF), Immunocytochemistry (ICC)

Product Details

Immunogen:	Recombinant protein encompassing a sequence within the center region of human CDC34. The exact sequence is proprietary.
Isotype:	IgG
Cross-Reactivity:	Human, Mouse
Characteristics:	Rabbit polyclonal antibody to CDC34 (cell division cycle 34 homolog ( <i>S. cerevisiae</i> )) CDC34 antibody [N1C3]
Purification:	Purified by antigen-affinity chromatography.

Target Details

Target:	CDC34
Alternative Name:	cell division cycle 34 ( <a href="#">CDC34 Products</a> )

## Target Details

---

**Background:** The protein encoded by this gene is a member of the ubiquitin-conjugating enzyme family. Ubiquitin-conjugating enzyme catalyzes the covalent attachment of ubiquitin to other proteins. This protein is a part of the large multiprotein complex, which is required for ubiquitin-mediated degradation of cell cycle G1 regulators, and for the initiation of DNA replication.

---

**Molecular Weight:** 27 kDa

---

**Gene ID:** 997

---

**UniProt:** [P49427](#)

## Application Details

---

**Application Notes:** WB: 1:500-1:3000. ICC/IF: 1:100-1:1000. Optimal dilutions/concentrations should be determined by the researcher. Not tested in other applications.

---

**Restrictions:** For Research Use only

## Handling

---

**Format:** Liquid

---

**Concentration:** 0.61 mg/mL

---

**Buffer:** 0.1M Tris-Glycine ( pH 7), 10 % Glycerol, 0.01 % Thimerosal

---

**Preservative:** Thimerosal (Merthiolate)

---

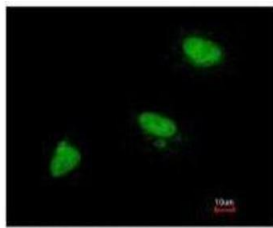
**Precaution of Use:** This product contains Thimerosal (Merthiolate): a POISONOUS AND HAZARDOUS SUBSTANCE which should be handled by trained staff only.

---

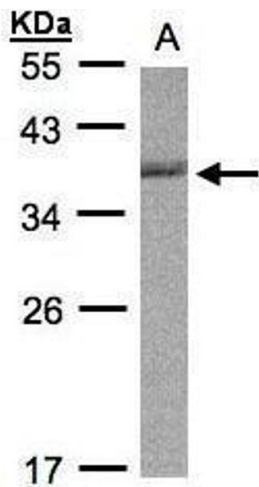
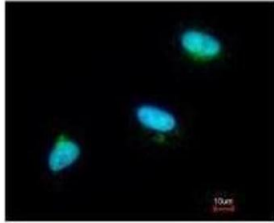
**Storage:** 4 °C, -20 °C

---

**Storage Comment:** Store as concentrated solution. Centrifuge briefly prior to opening vial. For short-term storage (1-2 weeks), store at 4°C. For long-term storage, aliquot and store at -20°C or below. Avoid multiple freeze-thaw cycles.



Costained with Hoechst 33342

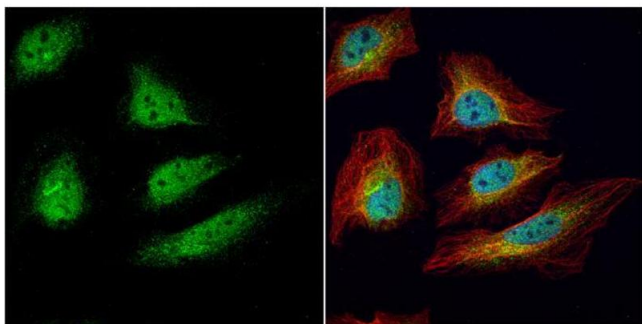


### Immunofluorescence

**Image 1.** ICC/IF Image Immunofluorescence analysis of paraformaldehyde-fixed A549, using CDC34, antibody at 1:200 dilution.

### Western Blotting

**Image 2.** WB Image Sample (30µg whole cell lysate) A:Raji , 12% SDS PAGE antibody diluted at 1:1000



### Immunofluorescence

**Image 3.** ICC/IF Image CDC34 antibody [N1C3] detects CDC34 protein at cytoplasm and nucleus by immunofluorescent analysis. Sample: HeLa cells were fixed in 4% paraformaldehyde at RT for 15 min. Green: CDC34 protein stained by CDC34 antibody [N1C3] , diluted at 1:200. Red: alpha Tubulin, a cytoskeleton marker, stained by alpha Tubulin antibody [B-5-1-2] , diluted at 1:10000. Blue: Hoechst 33342 staining.