

Datasheet for ABIN2856018

**anti-GTF2E2 antibody****3** Images[Go to Product page](#)

## Overview

Quantity:	100 µL
Target:	GTF2E2
Reactivity:	Human
Host:	Rabbit
Clonality:	Polyclonal
Conjugate:	This GTF2E2 antibody is un-conjugated
Application:	Western Blotting (WB), Immunoprecipitation (IP), Chromatin Immunoprecipitation (ChIP)

## Product Details

Immunogen:	Recombinant protein encompassing a sequence within the center region of human TFIIE beta. The exact sequence is proprietary.
Isotype:	IgG
Cross-Reactivity:	Human
Characteristics:	Rabbit Polyclonal antibody to TFIIE beta (general transcription factor IIE, polypeptide 2, beta 34 kDa) TFIIE beta antibody
Purification:	Purified by antigen-affinity chromatography.

## Target Details

Target:	GTF2E2
Alternative Name:	general transcription factor IIE subunit 2 ( <a href="#">GTF2E2 Products</a> )

## Target Details

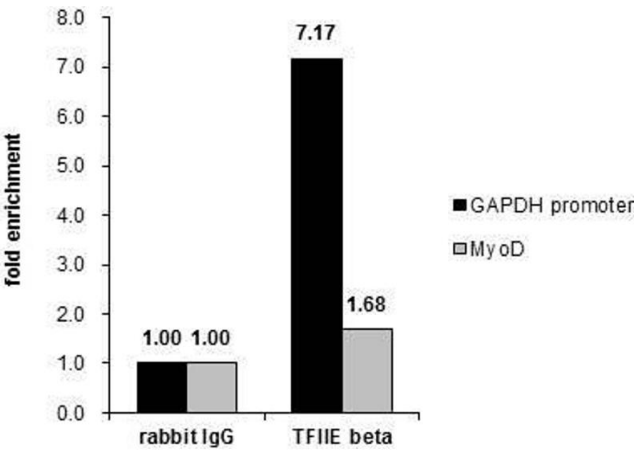
Background:	Cellular Localization: Nucleus
Molecular Weight:	33 kDa
Gene ID:	2961
UniProt:	<a href="#">P29084</a>

## Application Details

Application Notes:	WB: 1:1000-1:10000. IP: 1:100-1:500. Optimal dilutions/concentrations should be determined by the researcher. Not tested in other applications.
Comment:	Positive Control: Jurkat nucleus
Restrictions:	For Research Use only

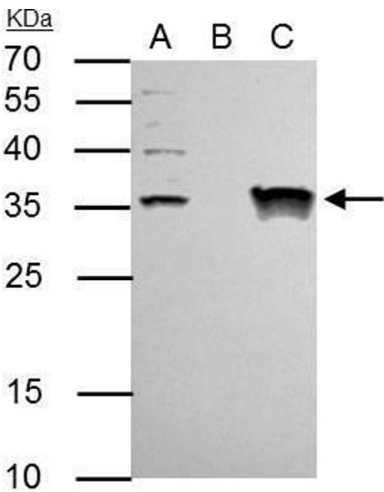
## Handling

Format:	Liquid
Concentration:	1 mg/mL
Buffer:	1XPBS ( pH 7), 1 % BSA, 20 % Glycerol, 0.01 % Thimerosal
Preservative:	Thimerosal (Merthiolate)
Precaution of Use:	This product contains Thimerosal (Merthiolate): a POISONOUS AND HAZARDOUS SUBSTANCE which should be handled by trained staff only.
Storage:	4 °C,-20 °C
Storage Comment:	Store as concentrated solution. Centrifuge briefly prior to opening vial. For short-term storage (1-2 weeks), store at 4°C. For long-term storage, aliquot and store at -20°C or below. Avoid multiple freeze-thaw cycles.



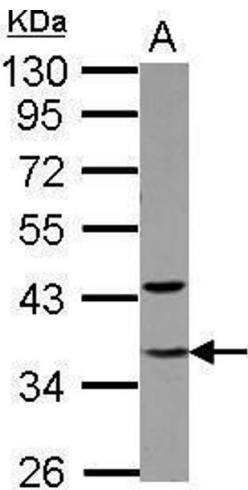
Chromatin Immunoprecipitation

**Image 1.** ChIP Image Cross-linked ChIP was performed with HeLa chromatin extract and 5 µg of either control rabbit IgG or anti-TFII beta antibody. The precipitated DNA was detected by PCR with primer set targeting to GAPDH promoter or MyoD.



Immunoprecipitation

**Image 2.** IP Image TFII beta antibody immunoprecipitates TFII beta protein in IP experiments. IP Sample: Jurkat whole cell lysate/extract A : 30 µg whole cell lysate/extract of TFII beta protein expressing Jurkat cells B : Control with 2.5 µg of pre-immune rabbit IgG C : Immunoprecipitation of TFII beta by 2.5 µg of TFII beta antibody , 12% SDS-PAGE The immunoprecipitated TFII beta protein was detected by TFII beta antibody , diluted at 1 : 1000. EasyBlot anti-rabbit IgG (HRP) was used as a secondary reagent.



Western Blotting

**Image 3.** WB Image Sample (30 ug of whole cell lysate) A: Jurkat nucleus 10% SDS PAGE antibody diluted at 1:5000