

Datasheet for ABIN2856019
anti-NSFL1C antibody (Center)

5 Images

[Go to Product page](#)

Overview

Quantity:	100 µL
Target:	NSFL1C
Binding Specificity:	Center
Reactivity:	Human, Mouse
Host:	Rabbit
Clonality:	Polyclonal
Conjugate:	This NSFL1C antibody is un-conjugated
Application:	Western Blotting (WB), Immunohistochemistry (Paraffin-embedded Sections) (IHC (p)), Immunoprecipitation (IP)

Product Details

Immunogen:	Recombinant protein encompassing a sequence within the center region of human NSFL1C. The exact sequence is proprietary.
Isotype:	IgG
Cross-Reactivity:	Rhesus Monkey
Cross-Reactivity (Details):	Rhesus Monkey (100 %)
Characteristics:	Rabbit Polyclonal antibody to NSFL1C (NSFL1 (p97) cofactor (p47)) NSFL1C antibody [N1C2]
Purification:	Purified by antigen-affinity chromatography.

Target Details

Target:	NSFL1C
Alternative Name:	NSFL1C (NSFL1C Products)
Background:	<p>N-ethylmaleimide-sensitive factor (NSF) and valosin-containing protein (p97) are two ATPases known to be involved in transport vesicle/target membrane fusion and fusions between membrane compartments. A trimer of the protein encoded by this gene binds a hexamer of cytosolic p97 and is required for p97-mediated regrowth of Golgi cisternae from mitotic Golgi fragments. Multiple transcript variants encoding several different isoforms have been found for this gene.</p> <p>Cellular Localization: Nucleus (By similarity) , Golgi apparatus , Golgi stack (By similarity)</p>
Molecular Weight:	41 kDa
Gene ID:	55968

Application Details

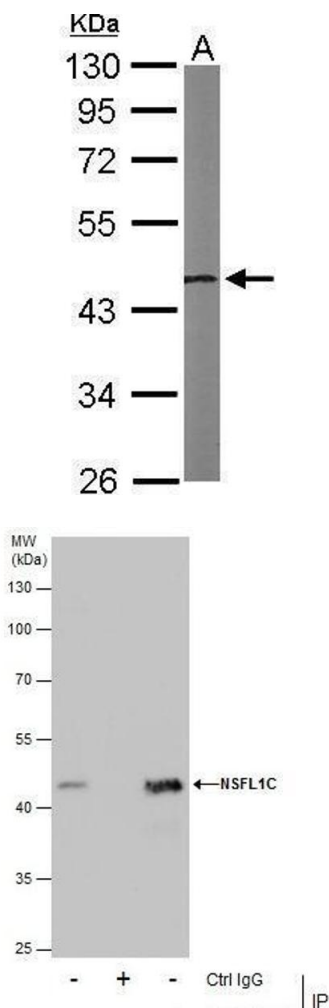
Application Notes:	<p>Suggested dilution Reference IHC (Formalin-fixed paraffin-embedded sections) 1:100-1:1000* Immunoprecipitation 1:100-1:500* Western blot 1:500-1:3000* Not tested in other applications. *Optimal dilutions/concentrations should be determined by the researcher.Suggested dilutionReferenceIHC (Formalin-fixed paraffin-embedded sections)1:100-1:1000* Immunoprecipitation1:100-1:500* Western blot1:500-1:3000*</p>
Comment:	Positive Control: 293T , A431 , H1299 , HeLaS3 , HepG2 , Molt-4 , Raji , mouse brain
Restrictions:	For Research Use only

Handling

Format:	Liquid
Concentration:	1 mg/mL
Buffer:	0.1M Tris, 0.1M Glycine, 10 % Glycerol (pH 7). 0.01 % Thimerosal was added as a preservative.
Preservative:	Thimerosal (Merthiolate)
Precaution of Use:	This product contains Thimerosal (Merthiolate): a POISONOUS AND HAZARDOUS SUBSTANCE which should be handled by trained staff only.
Storage:	-20 °C
Storage Comment:	Keep as concentrated solution. Aliquot and store at -20°C or below. Avoid multiple freeze-thaw

cycles.

Images



Western Blotting

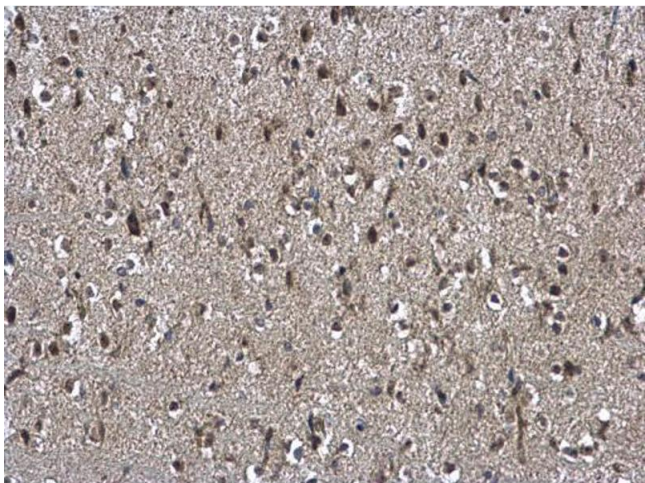
Image 1. WB Image Sample (50 ug of whole cell lysate) A: Mouse brain 10% SDS PAGE antibody diluted at 1:1000

Immunoprecipitation

Image 2. IP Image Immunoprecipitation of NSFL1C protein from A431 whole cell extracts using 5 µg of NSFL1C antibody [N1C2], Western blot analysis was performed using NSFL1C antibody [N1C2], EasyBlot anti-Rabbit IgG was used as a secondary reagent.

Immunohistochemistry

Image 3. IHC-P Image NSFL1C antibody [N1C2] detects NSFL1C protein at cytoplasm and nucleus on mouse brain by immunohistochemical analysis. Sample: Paraffin-embedded mouse brain. NSFL1C antibody [N1C2] , diluted at 1:500.



Please check the [product details page](#) for more images. Overall 5 images are available for ABIN2856019.