



[Go to Product page](#)

Datasheet for ABIN2856021
anti-BTD antibody

2 Images

Overview

Quantity:	100 µL
Target:	BTD
Reactivity:	Human
Host:	Rabbit
Clonality:	Polyclonal
Conjugate:	This BTD antibody is un-conjugated
Application:	Western Blotting (WB), Immunohistochemistry (Paraffin-embedded Sections) (IHC (p))

Product Details

Immunogen:	Recombinant protein encompassing a sequence within the center region of human BTD. The exact sequence is proprietary.
Isotype:	IgG
Cross-Reactivity:	Human, Mouse
Characteristics:	Rabbit Polyclonal antibody to BTD (biotinidase) BTD antibody [N3C3]
Purification:	Purified by antigen-affinity chromatography.

Target Details

Target:	BTD
Alternative Name:	biotinidase (BTD Products)

Target Details

Background: Biotinidase functions to recycle biotin in the body by cleaving biocytin (biotin-epsilon-lysine), a normal product of carboxylase degradation, resulting in regeneration of free biotin. Biotinidase has also been shown to have biotinyl-transferase activity. Defects in the biotinidase gene cause multiple carboxylase deficiency.

Cellular Localization: Secreted , extracellular space

Molecular Weight: 61 kDa

Gene ID: 686

UniProt: [P43251](#)

Application Details

Application Notes: WB: 1:500-1:3000. IHC-P: 1:100-1:1000. Optimal dilutions/concentrations should be determined by the researcher. Not tested in other applications.

Comment: Positive Control: Jurkat

Restrictions: For Research Use only

Handling

Format: Liquid

Concentration: 1 mg/mL

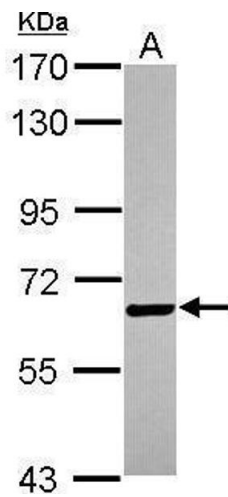
Buffer: 1XPBS (pH 7), 1 % BSA, 20 % Glycerol, 0.01 % Thimerosal

Preservative: Thimerosal (Merthiolate)

Precaution of Use: This product contains Thimerosal (Merthiolate): a POISONOUS AND HAZARDOUS SUBSTANCE which should be handled by trained staff only.

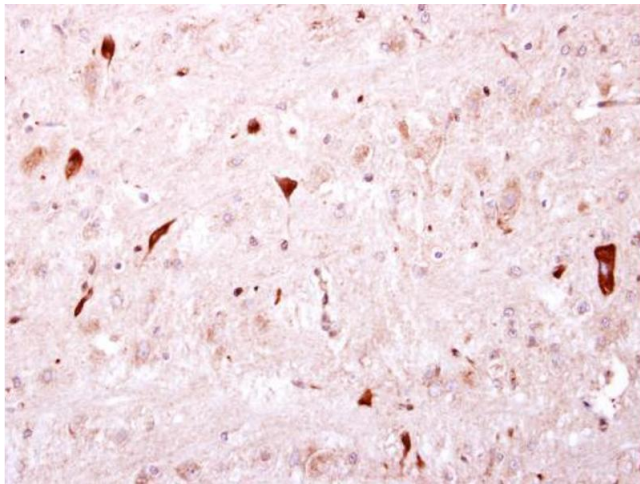
Storage: 4 °C,-20 °C

Storage Comment: Store as concentrated solution. Centrifuge briefly prior to opening vial. For short-term storage (1-2 weeks), store at 4°C. For long-term storage, aliquot and store at -20°C or below. Avoid multiple freeze-thaw cycles.



Western Blotting

Image 1. WB Image Sample (30 ug of whole cell lysate) A: Jurkat 7.5% SDS PAGE antibody diluted at 1:1000



Immunohistochemistry

Image 2. IHC-P Image BTB antibody [N3C3] detects BTB protein at cytosol on mouse hind brain by immunohistochemical analysis. Sample: Paraffin-embedded mouse hind brain. BTB antibody [N3C3], dilution: 1:250.