

Datasheet for ABIN2856031
anti-PSMD14 antibody (Center)

8 Images

1 Publication

[Go to Product page](#)

Overview

Quantity:	100 µL
Target:	PSMD14
Binding Specificity:	Center
Reactivity:	Human
Host:	Rabbit
Clonality:	Polyclonal
Conjugate:	This PSMD14 antibody is un-conjugated
Application:	Western Blotting (WB), Immunofluorescence (IF), Immunoprecipitation (IP), Immunohistochemistry (Paraffin-embedded Sections) (IHC (p)), Immunocytochemistry (ICC)

Product Details

Immunogen:	Recombinant protein encompassing a sequence within the center region of human MAD1. The exact sequence is proprietary.
Isotype:	IgG
Characteristics:	Rabbit Polyclonal antibody to MAD1 (MAD1 mitotic arrest deficient-like 1 (yeast)) MAD1 antibody
Purification:	Purified by antigen-affinity chromatography.

Target Details

Target:	PSMD14
Alternative Name:	MAD1 (PSMD14 Products)

Target Details

Background: MAD1L1 is a component of the mitotic spindle-assembly checkpoint that prevents the onset of anaphase until all chromosome are properly aligned at the metaphase plate. MAD1L1 functions as a homodimer and interacts with MAD2L1. MAD1L1 may play a role in cell cycle control and tumor suppression. Three transcript variants encoding the same protein have been found for this gene.

Cellular Localization: Nucleus , Kinetochore

Molecular Weight: 83 kDa

Gene ID: 8379

Pathways: [Mitotic G1-G1/S Phases](#), [DNA Replication](#), [M Phase](#), [Positive Regulation of Endopeptidase Activity](#), [Synthesis of DNA](#), [Ubiquitin Proteasome Pathway](#)

Application Details

Application Notes: Suggested dilution Reference ICC/IF 1:100-1:1000* IHC (Formalin-fixed paraffin-embedded sections) 1:100-1:1000* Immunoprecipitation 1:100-1:500* Western blot 1:500-1:3000* Not tested in other applications. *Optimal dilutions/concentrations should be determined by the researcher.Suggested dilutionReferenceICC/IF1:100-1:1000* IHC (Formalin-fixed paraffin-embedded sections)1:100-1:1000* Immunoprecipitation1:100-1:500* Western blot1:500-1:3000*

Comment: Positive Control: 293T , A431 , HeLa , HepG2 , A375

Restrictions: For Research Use only

Handling

Format: Liquid

Concentration: 1 mg/mL

Buffer: 1XPBS, 1 % BSA, 20 % Glycerol (pH 7). 0.01 % Thimerosal was added as a preservative.

Preservative: Thimerosal (Merthiolate)

Precaution of Use: This product contains Thimerosal (Merthiolate): a POISONOUS AND HAZARDOUS SUBSTANCE which should be handled by trained staff only.

Storage: -20 °C

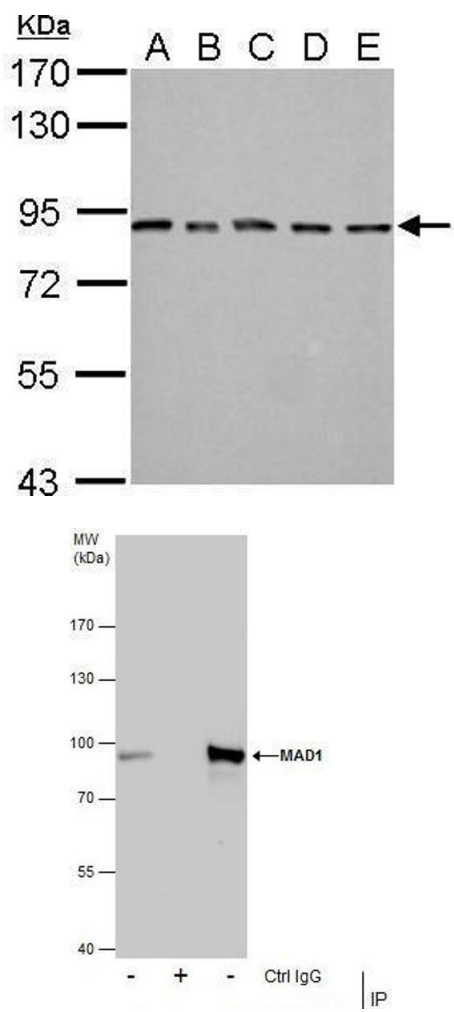
Storage Comment: Keep as concentrated solution. Aliquot and store at -20°C or below. Avoid multiple freeze-thaw

cycles.

Publications

Product cited in: Alfonso-Pérez, Hayward, Holder, Gruneberg, Barr: "MAD1-dependent recruitment of CDK1-CCNB1 to kinetochores promotes spindle checkpoint signaling." in: **The Journal of cell biology**, Vol. 218, Issue 4, pp. 1108-1117, (2020) ([PubMed](#)).

Images

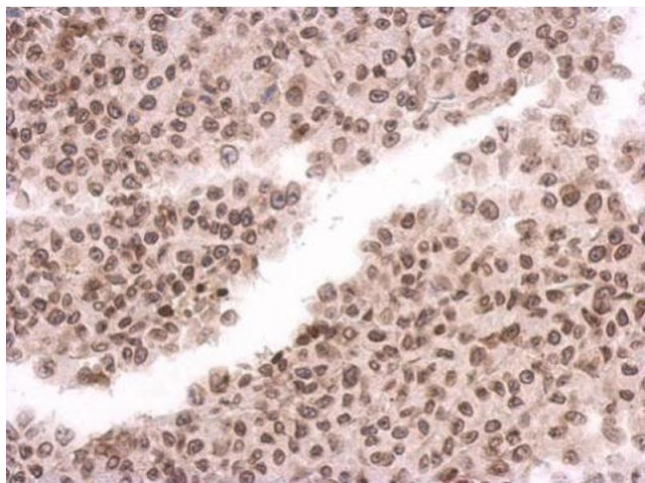


Western Blotting

Image 1. WB Image MAD1 antibody detects MAD1L1 protein by Western blot analysis. A. 30 µg 293T whole cell lysate/extract B. 30 µg A431 whole cell lysate/extract C. 30 µg HeLa whole cell lysate/extract D. 30 µg HepG2 whole cell lysate/extract E. 30 µg A375 whole cell lysate/extract 7.5 % SDS-PAGE MAD1 antibody , dilution: 1:1000

Immunoprecipitation

Image 2. IP Image Immunoprecipitation of MAD1 protein from HeLa whole cell extracts using 5 µg of MAD1 antibody, Western blot analysis was performed using MAD1 antibody, EasyBlot anti-Rabbit IgG was used as a secondary reagent.



Immunohistochemistry

Image 3. IHC-P Image Immunohistochemical analysis of paraffin-embedded HBL435 xenograft, using MAD1, antibody at 1:500 dilution.

Please check the [product details page](#) for more images. Overall 8 images are available for ABIN2856031.