

Datasheet for ABIN2856034

anti-LOXL2 antibody

8 Images

5 Publications

[Go to Product page](#)

Overview

Quantity:	100 µL
Target:	LOXL2
Reactivity:	Human
Host:	Rabbit
Clonality:	Polyclonal
Conjugate:	This LOXL2 antibody is un-conjugated
Application:	Western Blotting (WB), ELISA, Immunohistochemistry (IHC), Immunocytochemistry (ICC), Immunohistochemistry (Paraffin-embedded Sections) (IHC (p)), Immunofluorescence (IF)

Product Details

Immunogen:	Recombinant protein encompassing a sequence within the center region of human LOXL2. The exact sequence is proprietary.
Isotype:	IgG
Specificity:	Mouse reactivity has been validated by IHC-P only, not yet been tested by other applications.
Cross-Reactivity:	Human, Mouse
Characteristics:	Rabbit Polyclonal antibody to LOXL2 (lysyl oxidase-like 2) LOXL2 antibody
Purification:	Purified by antigen-affinity chromatography.
Grade:	KO Validated

Target Details

Target:	LOXL2
Alternative Name:	lysyl oxidase like 2 (LOXL2 Products)
Background:	<p>This gene encodes a member of the lysyl oxidase gene family. The prototypic member of the family is essential to the biogenesis of connective tissue, encoding an extracellular copper-dependent amine oxidase that catalyses the first step in the formation of crosslinks in collagens and elastin. A highly conserved amino acid sequence at the C-terminus end appears to be sufficient for amine oxidase activity, suggesting that each family member may retain this function. The N-terminus is poorly conserved and may impart additional roles in developmental regulation, senescence, tumor suppression, cell growth control, and chemotaxis to each member of the family.</p> <p>Cellular Localization: Secreted , extracellular space</p>
Molecular Weight:	87 kDa
Gene ID:	4017
UniProt:	Q9Y4K0
Pathways:	Chromatin Binding

Application Details

Application Notes:	WB: 1:500-1:10000. ICC/IF: 1:100-1:1000. IHC-P: 1:100-1:1000. Optimal dilutions/concentrations should be determined by the researcher. Not tested in other applications.
Comment:	Positive Control: U87-MG , SK-N-SH , SK-N-AS , 293T transfected with LOXL2 Validation: KO/KD, Orthogonal, Overexpression
Restrictions:	For Research Use only

Handling

Format:	Liquid
Concentration:	0.86 mg/mL
Buffer:	1XPBS, 20 % Glycerol (pH 7), 0.025 % ProClin 300
Preservative:	ProClin
Precaution of Use:	This product contains ProClin: a POISONOUS AND HAZARDOUS SUBSTANCE which should be handled by trained staff only.

Handling

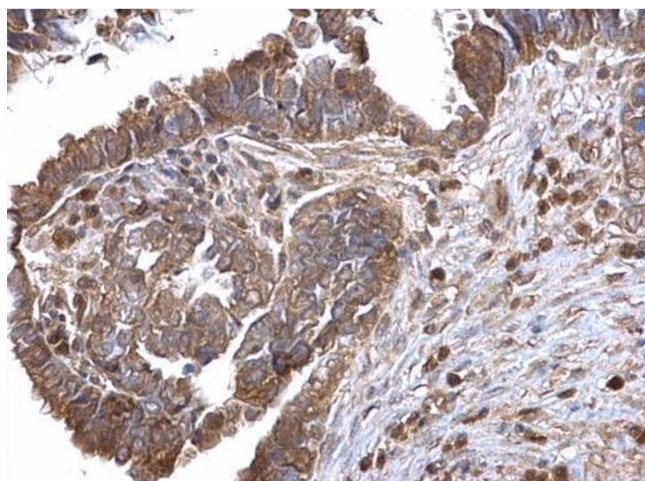
Storage: 4 °C, -20 °C

Storage Comment: Store as concentrated solution. Centrifuge briefly prior to opening vial. For short-term storage (1-2 weeks), store at 4°C. For long-term storage, aliquot and store at -20°C or below. Avoid multiple freeze-thaw cycles.

Publications

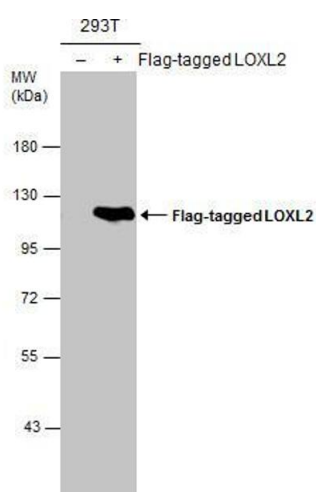
Product cited in: Salzman, Nakamura, Nallur, Dookwah, Metheetrairut, Slack, Weidhaas: "miR-34 activity is modulated through 5'-end phosphorylation in response to DNA damage." in: **Nature communications**, Vol. 7, pp. 10954, (2016) ([PubMed](#)).

Images



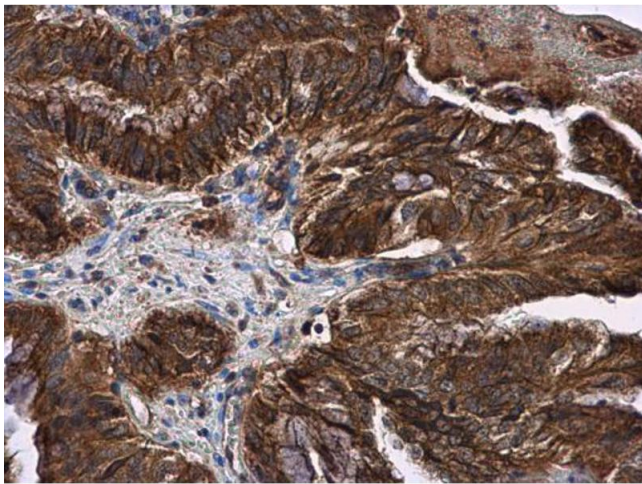
Immunohistochemistry

Image 1. IHC-P Image LOXL2 antibody detects LOXL2 protein at cytosol on human ovarian carcinoma by immunohistochemical analysis. Sample: Paraffin-embedded human ovarian carcinoma. LOXL2 antibody, dilution: 1:500.



Western Blotting

Image 2. WB Image Non-transfected (-) and transfected (+) 293T whole cell extracts (30 µg) were separated by 7.5% SDS-PAGE, and the membrane was blotted with LOXL2 antibody, diluted at 1:5000.



Immunohistochemistry

Image 3. IHC-P Image LOXL2 antibody detects LOXL2 protein at cytoplasm and membrane in human cervical carcinoma by immunohistochemical analysis. Sample: Paraffin-embedded human cervical carcinoma. LOXL2 antibody , diluted at 1:500.

Please check the [product details page](#) for more images. Overall 8 images are available for ABIN2856034.