

Datasheet for ABIN2856035

anti-RFC2 antibody**3** Images[Go to Product page](#)

Overview

Quantity:	100 µL
Target:	RFC2
Reactivity:	Human
Host:	Rabbit
Clonality:	Polyclonal
Conjugate:	This RFC2 antibody is un-conjugated
Application:	Western Blotting (WB), Immunofluorescence (IF), Immunocytochemistry (ICC)

Product Details

Immunogen:	Recombinant protein encompassing a sequence within the center region of human RFC2. The exact sequence is proprietary.
Isotype:	IgG
Cross-Reactivity:	Human
Characteristics:	Rabbit Polyclonal antibody to RFC2 (replication factor C (activator 1) 2, 40 kDa) RFC2 antibody
Purification:	Purified by antigen-affinity chromatography.

Target Details

Target:	RFC2
Alternative Name:	replication factor C subunit 2 (RFC2 Products)

Target Details

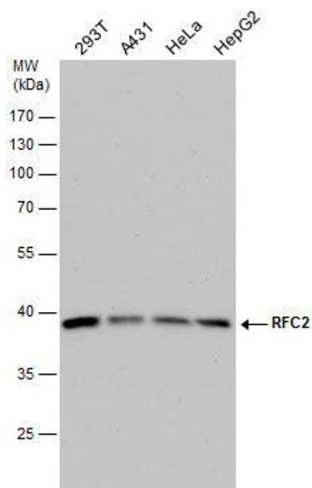
Background:	<p>The elongation of primed DNA templates by DNA polymerase delta and epsilon requires the action of the accessory proteins, proliferating cell nuclear antigen (PCNA) and replication factor C (RFC). RFC, also called activator 1, is a protein complex consisting of five distinct subunits of 145, 40, 38, 37, and 36.5 kD. This gene encodes the 40 kD subunit, which has been shown to be responsible for binding ATP. Deletion of this gene has been associated with Williams syndrome. Alternatively spliced transcript variants encoding distinct isoforms have been described.</p> <p>Cellular Localization: Nucleus</p>
Molecular Weight:	39 kDa
Gene ID:	5982
UniProt:	P35250
Pathways:	Telomere Maintenance , DNA Damage Repair , DNA Replication , Synthesis of DNA

Application Details

Application Notes:	WB: 1:500-1:3000. ICC/IF: 1:100-1:1000. Optimal dilutions/concentrations should be determined by the researcher. Not tested in other applications.
Comment:	Positive Control: H1299 , 293T , A431 , HeLa , HepG2
Restrictions:	For Research Use only

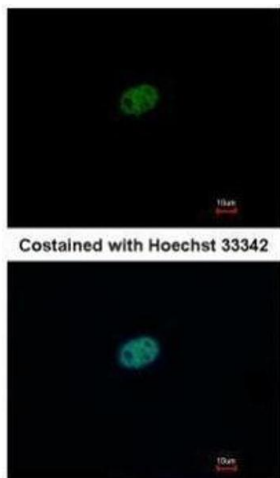
Handling

Format:	Liquid
Concentration:	0.43 mg/mL
Buffer:	0.1M Tris-Glycine (pH 7), 10 % Glycerol, 0.01 % Thimerosal
Preservative:	Thimerosal (Merthiolate)
Precaution of Use:	This product contains Thimerosal (Merthiolate): a POISONOUS AND HAZARDOUS SUBSTANCE which should be handled by trained staff only.
Storage:	4 °C,-20 °C
Storage Comment:	Store as concentrated solution. Centrifuge briefly prior to opening vial. For short-term storage (1-2 weeks), store at 4°C. For long-term storage, aliquot and store at -20°C or below. Avoid multiple freeze-thaw cycles.



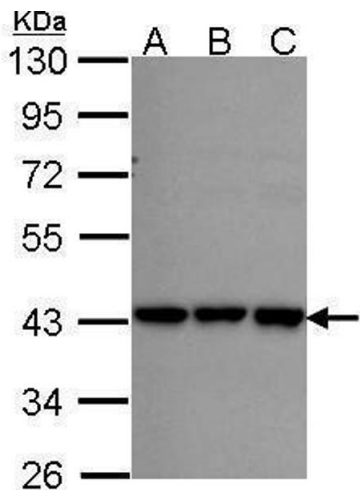
Western Blotting

Image 1. WB Image RFC2 antibody detects RFC2 protein by western blot analysis. Various whole cell extracts (30 µg) were separated by 10% SDS-PAGE, and the membrane was blotted with RFC2 antibody, diluted by 1:1000.



Immunofluorescence

Image 2. ICC/IF Image Immunofluorescence analysis of paraformaldehyde-fixed HeLa, using RFC2, antibody at 1:500 dilution.



Western Blotting

Image 3. WB Image Sample (30 ug of whole cell lysate) A: A431, B: H1299 C: HeLa 10% SDS PAGE RFC2 antibody antibody diluted at 1:1000