

Datasheet for ABIN2856037
anti-SMAD5 antibody



[Go to Product page](#)

1 Image

Overview

Quantity:	100 µL
Target:	SMAD5
Reactivity:	Human
Host:	Rabbit
Clonality:	Polyclonal
Conjugate:	This SMAD5 antibody is un-conjugated
Application:	Immunofluorescence (IF), Immunocytochemistry (ICC)

Product Details

Immunogen:	Recombinant protein encompassing a sequence within the center region of human SMAD5. The exact sequence is proprietary.
Isotype:	IgG
Cross-Reactivity:	Human
Characteristics:	Rabbit Polyclonal antibody to SMAD5 (SMAD family member 5) SMAD5 antibody [N2C2], Internal
Purification:	Purified by antigen-affinity chromatography.

Target Details

Target:	SMAD5
Alternative Name:	SMAD family member 5 (SMAD5 Products)

Target Details

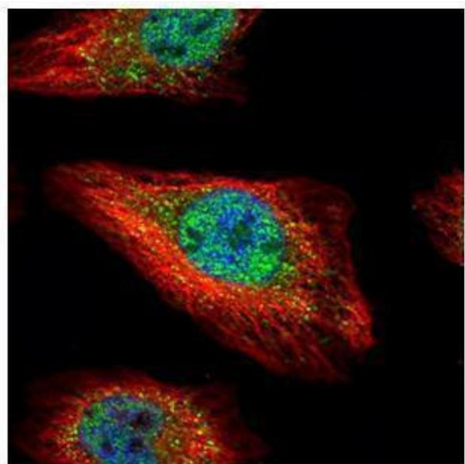
Background:	Cellular Localization: Cytoplasm , Nucleus
Molecular Weight:	52 kDa
Gene ID:	4090
UniProt:	Q99717

Application Details

Application Notes:	ICC/IF: 1:100-1:1000. Optimal dilutions/concentrations should be determined by the researcher. Not tested in other applications.
Restrictions:	For Research Use only

Handling

Format:	Liquid
Concentration:	0.9 mg/mL
Buffer:	1XPBS (pH 7), 1 % BSA, 20 % Glycerol, 0.01 % Thimerosal
Preservative:	Thimerosal (Merthiolate)
Precaution of Use:	This product contains Thimerosal (Merthiolate): a POISONOUS AND HAZARDOUS SUBSTANCE which should be handled by trained staff only.
Storage:	4 °C,-20 °C
Storage Comment:	Store as concentrated solution. Centrifuge briefly prior to opening vial. For short-term storage (1-2 weeks), store at 4°C. For long-term storage, aliquot and store at -20°C or below. Avoid multiple freeze-thaw cycles.



Immunofluorescence

Image 1. ICC/IF Image Confocal immunofluorescence analysis (Olympus FV10i) of paraformaldehyde-fixed HeLa, using SMAD5, antibody (Green) at 1:500 dilution. Alpha-tubulin filaments were labeled with (Red) at 1:2000.