

Datasheet for ABIN2856038
anti-FBLN2 antibody (N-Term)

2 Images

[Go to Product page](#)

Overview

Quantity:	100 µL
Target:	FBLN2
Binding Specificity:	N-Term
Reactivity:	Human
Host:	Rabbit
Clonality:	Polyclonal
Conjugate:	This FBLN2 antibody is un-conjugated
Application:	Western Blotting (WB), Immunohistochemistry (Paraffin-embedded Sections) (IHC (p))

Product Details

Immunogen:	Recombinant protein encompassing a sequence within the N-terminus region of human Fibulin 2. The exact sequence is proprietary.
Isotype:	IgG
Cross-Reactivity:	Human, Mouse, Rat
Characteristics:	Rabbit Polyclonal antibody to Fibulin 2 (fibulin 2) Fibulin 2 antibody
Purification:	Purified by antigen-affinity chromatography.

Target Details

Target:	FBLN2
---------	-------

Target Details

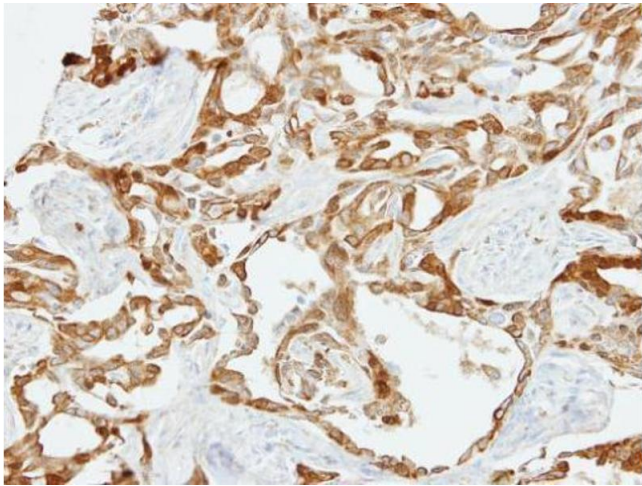
Alternative Name:	fibulin 2 (FBLN2 Products)
Background:	<p>This gene encodes an extracellular matrix protein, which belongs to the fibulin family. This protein binds various extracellular ligands and calcium. It may play a role during organ development, in particular, during the differentiation of heart, skeletal and neuronal structures. Alternatively spliced transcript variants encoding different isoforms have been identified.</p> <p>Cellular Localization: Secreted , extracellular space , extracellular matrix</p>
Molecular Weight:	127 kDa
Gene ID:	2199
UniProt:	P98095

Application Details

Application Notes:	WB: 1:500-1:3000. IHC-P: 1:100-1:1000. Optimal dilutions/concentrations should be determined by the researcher. Not tested in other applications.
Restrictions:	For Research Use only

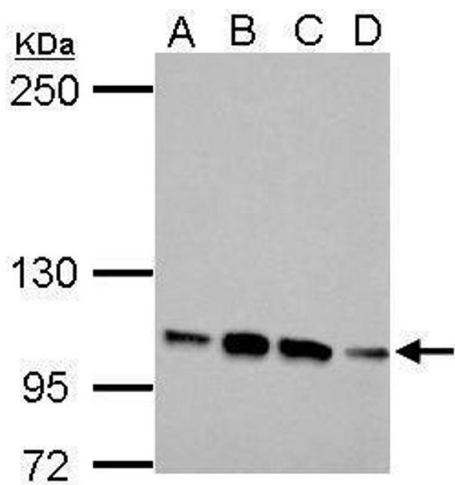
Handling

Format:	Liquid
Concentration:	0.49 mg/mL
Buffer:	1XPBS (pH 7), 20 % Glycerol, 0.025 % ProClin 300
Preservative:	ProClin
Precaution of Use:	This product contains ProClin: a POISONOUS AND HAZARDOUS SUBSTANCE which should be handled by trained staff only.
Storage:	4 °C,-20 °C
Storage Comment:	Store as concentrated solution. Centrifuge briefly prior to opening vial. For short-term storage (1-2 weeks), store at 4°C. For long-term storage, aliquot and store at -20°C or below. Avoid multiple freeze-thaw cycles.



Immunohistochemistry

Image 1. IHC-P Image Immunohistochemical analysis of paraffin-embedded H661 xenograft, using Fibulin 2, antibody at 1:500 dilution.



Western Blotting

Image 2. WB Image Sample (30 ug of whole cell lysate)