

Datasheet for ABIN2856040
anti-MAGEB1 antibody (Center)[Go to Product page](#)

2 Images

Overview

Quantity:	100 µL
Target:	MAGEB1
Binding Specificity:	Center
Reactivity:	Human
Host:	Rabbit
Clonality:	Polyclonal
Conjugate:	This MAGEB1 antibody is un-conjugated
Application:	Western Blotting (WB), Immunohistochemistry (Paraffin-embedded Sections) (IHC (p))

Product Details

Immunogen:	Recombinant protein encompassing a sequence within the center region of human MAGEB1. The exact sequence is proprietary.
Isotype:	IgG
Characteristics:	Rabbit Polyclonal antibody to MAGEB1 (melanoma antigen family B, 1) MAGEB1 antibody
Purification:	Purified by antigen-affinity chromatography.

Target Details

Target:	MAGEB1
Alternative Name:	MAGEB1 (MAGEB1 Products)

Target Details

Background:	This gene is a member of the MAGEB gene family. The members of this family have their entire coding sequences located in the last exon, and the encoded proteins show 50 to 68 % sequence identity to each other. The promoters and first exons of the MAGEB genes show considerable variability, suggesting that the existence of this gene family enables the same function to be expressed under different transcriptional controls. This gene is localized in the DSS (dosage-sensitive sex reversal) critical region, and expressed in testis and in a significant fraction of tumors of various histological types. This gene and other MAGEB members are clustered on chromosome Xp22-p21. Multiple alternatively spliced transcript variants encoding the same protein have been found for this gene, however, the full length nature of some variants has not been defined.
-------------	--

Molecular Weight:	39 kDa
-------------------	--------

Gene ID:	4112
----------	------

Application Details

Application Notes:	Suggested dilution Reference IHC (Formalin-fixed paraffin-embedded sections) 1:100-1:1000* Western blot 1:500-1:3000* Not tested in other applications. *Optimal dilutions/concentrations should be determined by the researcher.Suggested dilutionReferenceIHC (Formalin-fixed paraffin-embedded sections)1:100-1:1000* Western blot1:500-1:3000*
--------------------	--

Comment:	Positive Control: H1299
----------	-------------------------

Restrictions:	For Research Use only
---------------	-----------------------

Handling

Format:	Liquid
---------	--------

Concentration:	0.59 mg/mL
----------------	------------

Buffer:	0.1M Tris, 0.1M Glycine, 10 % Glycerol (pH 7). 0.01 % Thimerosal was added as a preservative.
---------	--

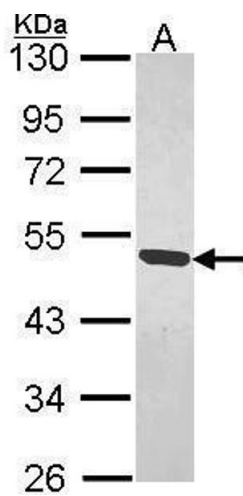
Preservative:	Thimerosal (Merthiolate)
---------------	--------------------------

Precaution of Use:	This product contains Thimerosal (Merthiolate): a POISONOUS AND HAZARDOUS SUBSTANCE which should be handled by trained staff only.
--------------------	--

Storage:	-20 °C
----------	--------

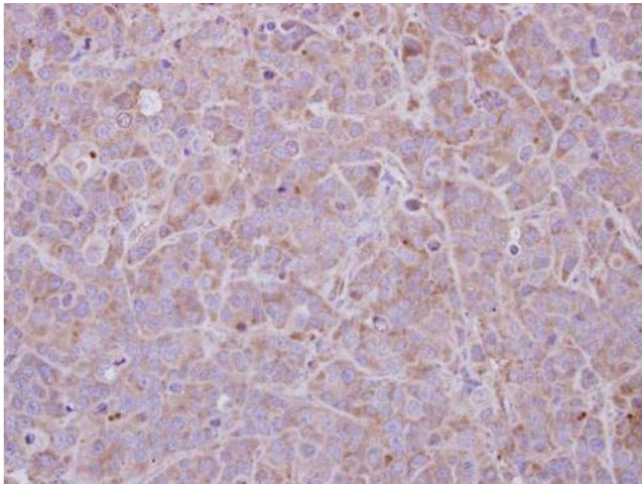
Storage Comment:	Keep as concentrated solution. Aliquot and store at -20°C or below. Avoid multiple freeze-thaw
------------------	--

cycles.



Western Blotting

Image 1. WB Image Sample (30 ug of whole cell lysate) A: H1299 10% SDS PAGE MAGEB1 antibody antibody diluted at 1:1000



Immunohistochemistry

Image 2. IHC-P Image MAGEB1 antibody detects MAGEB1 protein at cytosol on MCF-7 xenograft by immunohistochemical analysis. Sample: Paraffin-embedded MCF-7 xenograft. MAGEB1 antibody , dilution: 1:500.