

Datasheet for ABIN2856043
anti-alpha KGDHC antibody (C-Term)

5 Images

[Go to Product page](#)

Overview

Quantity:	100 µL
Target:	alpha KGDHC (alphaKGDHC)
Binding Specificity:	C-Term
Reactivity:	Human
Host:	Rabbit
Clonality:	Polyclonal
Conjugate:	This alpha KGDHC antibody is un-conjugated
Application:	Western Blotting (WB), Immunofluorescence (IF), Immunohistochemistry (Paraffin-embedded Sections) (IHC (p)), Immunocytochemistry (ICC)

Product Details

Immunogen:	Recombinant protein encompassing a sequence within the C-terminus region of human OGDH. The exact sequence is proprietary.
Isotype:	IgG
Cross-Reactivity:	Human, Mouse
Characteristics:	Rabbit Polyclonal antibody to OGDH (oxoglutarate (alpha-ketoglutarate) dehydrogenase (lipoamide)) OGDH antibody [C2C3], C-term
Purification:	Purified by antigen-affinity chromatography.

Target Details

Target:	alpha KGDHC (alphaKGDHC)
Alternative Name:	oxoglutarate dehydrogenase (alphaKGDHC Products)
Background:	<p>This gene encodes one subunit of the 2-oxoglutarate dehydrogenase complex. This complex catalyzes the overall conversion of 2-oxoglutarate (alpha-ketoglutarate) to succinyl-CoA and CO(2) during the Krebs cycle. The protein is located in the mitochondrial matrix and uses thiamine pyrophosphate as a cofactor. A congenital deficiency in 2-oxoglutarate dehydrogenase activity is believed to lead to hypotonia, metabolic acidosis, and hyperlactatemia.</p> <p>Cellular Localization: Mitochondrion matrix</p>
Molecular Weight:	116 kDa
Gene ID:	4967
UniProt:	Q02218

Application Details

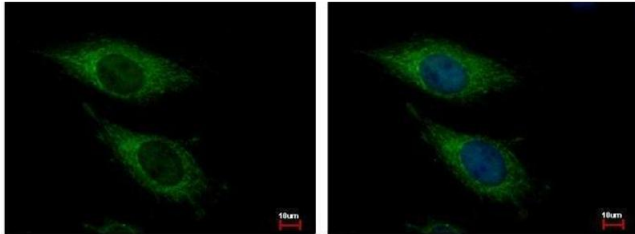
Application Notes:	WB: 1:500-1:10000. ICC/IF: 1:100-1:1000. IHC-P: 1:100-1:1000. Optimal dilutions/concentrations should be determined by the researcher. Not tested in other applications.
Comment:	Positive Control: Mouse brain , 293T , A431 , HeLa , HepG2
Restrictions:	For Research Use only

Handling

Format:	Liquid
Concentration:	0.3 mg/mL
Buffer:	1XPBS (pH 7), 1 % BSA, 20 % Glycerol, 0.025 % ProClin 300
Preservative:	ProClin
Precaution of Use:	This product contains ProClin: a POISONOUS AND HAZARDOUS SUBSTANCE which should be handled by trained staff only.
Storage:	4 °C,-20 °C
Storage Comment:	Store as concentrated solution. Centrifuge briefly prior to opening vial. For short-term storage (1-2 weeks), store at 4°C. For long-term storage, aliquot and store at -20°C or below. Avoid

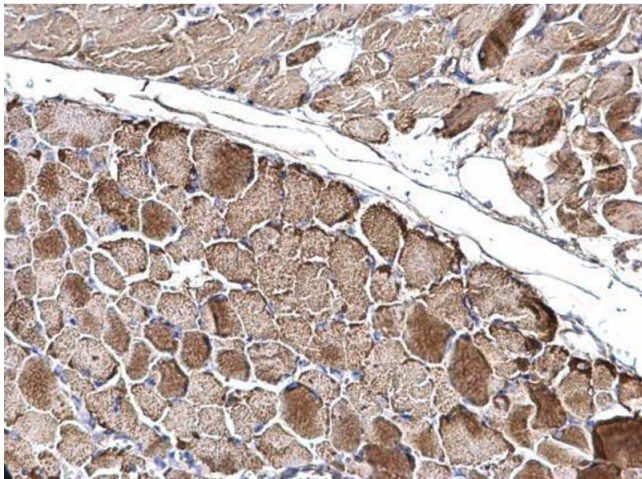
multiple freeze-thaw cycles.

Images



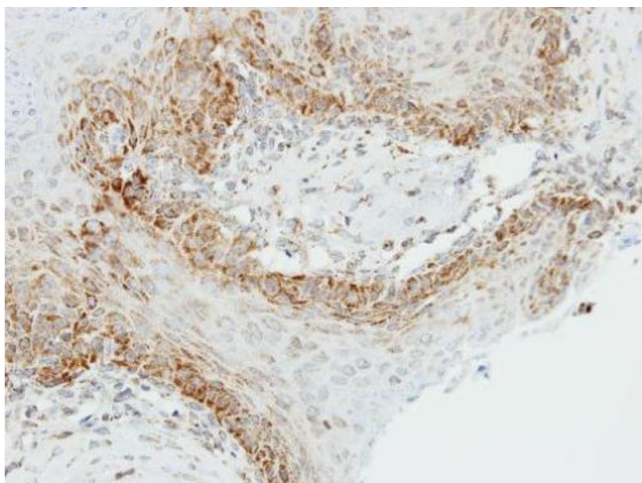
Immunofluorescence

Image 1. ICC/IF Image OGDH antibody [C2C3], C-term detects OGDH protein at Mitochondria by immunofluorescent analysis. Sample: HeLa cells were fixed in -20°C 100% MeOH for 5 min. Green: OGDH protein stained by OGDH antibody [C2C3], C-term, diluted at 1:500. Blue: Hoechst 33343 staining.



Immunohistochemistry

Image 2. IHC-P Image OGDH antibody [C2C3], C-term detects OGDH protein at mitochondria on mouse muscle by immunohistochemical analysis. Sample: Paraffin-embedded mouse muscle. OGDH antibody [C2C3], C-term, dilution: 1:500.



Immunohistochemistry

Image 3. IHC-P Image Immunohistochemical analysis of paraffin-embedded Cal27 xenograft, using OGDH, antibody at 1:500 dilution.

Please check the [product details page](#) for more images. Overall 5 images are available for ABIN2856043.