

Datasheet for ABIN2856045

anti-OTC antibody**3** Images[Go to Product page](#)

Overview

Quantity:	100 µL
Target:	OTC
Reactivity:	Human
Host:	Rabbit
Clonality:	Polyclonal
Conjugate:	This OTC antibody is un-conjugated
Application:	Western Blotting (WB), Immunohistochemistry (Paraffin-embedded Sections) (IHC (p)), Immunohistochemistry (Frozen Sections) (IHC (fro))

Product Details

Immunogen:	Recombinant protein encompassing a sequence within the center region of human OTC. The exact sequence is proprietary.
Isotype:	IgG
Cross-Reactivity:	Human, Mouse
Characteristics:	Rabbit Polyclonal antibody to OTC (ornithine carbamoyltransferase) OTC antibody
Purification:	Purified by antigen-affinity chromatography.

Target Details

Target:	OTC
Alternative Name:	ornithine carbamoyltransferase (OTC Products)

Target Details

Background: This nuclear gene encodes a mitochondrial matrix enzyme. Missense, nonsense, and frameshift mutations in this enzyme lead to ornithine transcarbamylase deficiency, which causes hyperammonemia. Since the gene for this enzyme maps close to that for Duchenne muscular dystrophy, it may play a role in that disease also.

Cellular Localization: Mitochondrion matrix

Molecular Weight: 40 kDa

Gene ID: 5009

UniProt: [P00480](#)

Application Details

Application Notes: WB: 1:500-1:30000. IHC-P: 1:100-1:1000. Optimal dilutions/concentrations should be determined by the researcher. Not tested in other applications.

Comment: Positive Control: Mouse liver, Human liver

Restrictions: For Research Use only

Handling

Format: Liquid

Concentration: 1.39 mg/mL

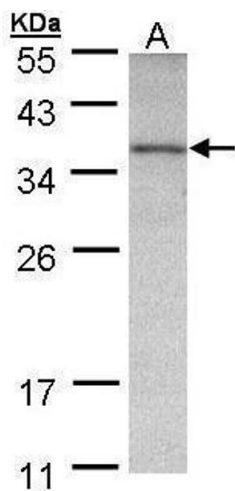
Buffer: 1XPBS pH 7, 20 % Glycerol, 0.025 % ProClin 300

Preservative: ProClin

Precaution of Use: This product contains ProClin: a POISONOUS AND HAZARDOUS SUBSTANCE which should be handled by trained staff only.

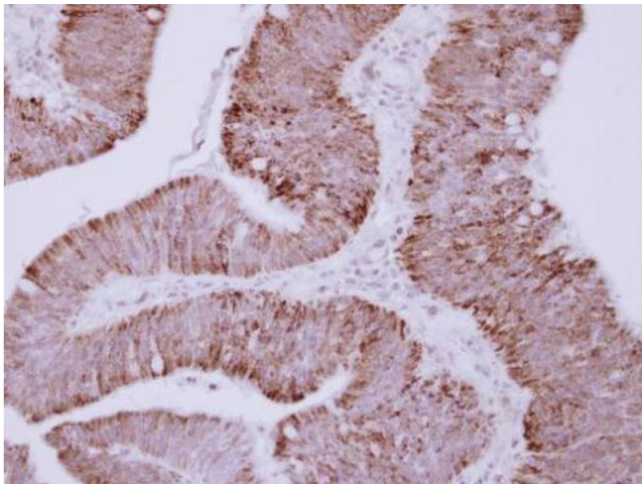
Storage: 4 °C, -20 °C

Storage Comment: Store as concentrated solution. Centrifuge briefly prior to opening vial. For short-term storage (1-2 weeks), store at 4°C. For long-term storage, aliquot and store at -20°C or below. Avoid multiple freeze-thaw cycles.



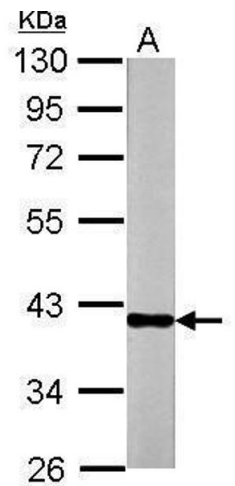
Western Blotting

Image 1. WB Image Sample (30 ug of whole cell lysate) A:
A431 , 12% SDS PAGE antibody diluted at 1:500



Immunohistochemistry

Image 2. IHC-P Image Immunohistochemical analysis of
paraffin-embedded human colon carcinoma, using OTC,
antibody at 1:250 dilution.



Western Blotting

Image 3. WB Image Sample (20 ug of whole cell lysate) A:
mouse Liver 10% SDS PAGE antibody diluted at 1:30000