

Datasheet for ABIN2856047
anti-CCT6A antibody



[Go to Product page](#)

2 Images

Overview

Quantity:	100 µL
Target:	CCT6A
Reactivity:	Human
Host:	Rabbit
Clonality:	Polyclonal
Conjugate:	This CCT6A antibody is un-conjugated
Application:	Western Blotting (WB)

Product Details

Immunogen:	Recombinant protein encompassing a sequence within the center region of human TCP1 zeta. The exact sequence is proprietary.
Isotype:	IgG
Cross-Reactivity:	Human, Mouse
Characteristics:	Rabbit Polyclonal antibody to TCP1 zeta (chaperonin containing TCP1, subunit 6A (zeta 1)) TCP1 zeta antibody [N2C2], Internal
Purification:	Purified by antigen-affinity chromatography.

Target Details

Target:	CCT6A
Alternative Name:	chaperonin containing TCP1 subunit 6A (CCT6A Products)

Target Details

Background: This gene encodes a molecular chaperone that is member of the chaperonin containing TCP1 complex (CCT), also known as the TCP1 ring complex (TRiC). This complex consists of two identical stacked rings, each containing eight different proteins. Unfolded polypeptides enter the central cavity of the complex and are folded in an ATP-dependent manner. The complex folds various proteins, including actin and tubulin. Alternate transcriptional splice variants of this gene, encoding different isoforms, have been characterized.

Cellular Localization: Cytoplasm

Molecular Weight: 58 kDa

Gene ID: 908

UniProt: [P40227](#)

Application Details

Application Notes: WB: 1:1000-1:10000. Optimal dilutions/concentrations should be determined by the researcher. Not tested in other applications.

Comment: Positive Control: Mouse brain

Restrictions: For Research Use only

Handling

Format: Liquid

Concentration: 0.53 mg/mL

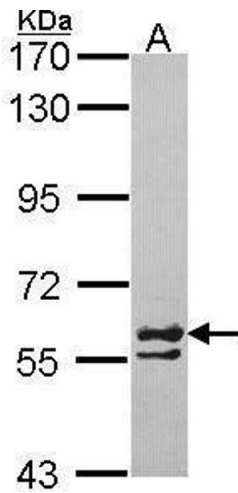
Buffer: 0.1M Tris-Glycine (pH 7), 10 % Glycerol, 0.01 % Thimerosal

Preservative: Thimerosal (Merthiolate)

Precaution of Use: This product contains Thimerosal (Merthiolate): a POISONOUS AND HAZARDOUS SUBSTANCE which should be handled by trained staff only.

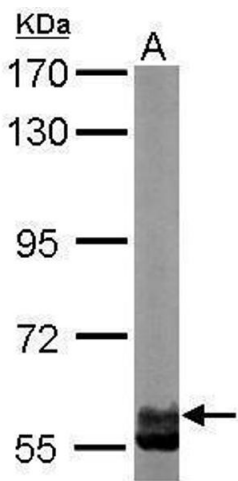
Storage: 4 °C,-20 °C

Storage Comment: Store as concentrated solution. Centrifuge briefly prior to opening vial. For short-term storage (1-2 weeks), store at 4°C. For long-term storage, aliquot and store at -20°C or below. Avoid multiple freeze-thaw cycles.



Western Blotting

Image 1. WB Image Sample (30 ug of whole cell lysate) A:
H1299 7.5% SDS PAGE TCP-1-zeta antibody antibody
diluted at 1:1000



Western Blotting

Image 2. WB Image Sample (50 ug of whole cell lysate) A:
Mouse brain 7.5% SDS PAGE antibody diluted at 1:10000