

Datasheet for ABIN2856051

**anti-HADH antibody**

## 7 Images

[Go to Product page](#)

## Overview

Quantity:	100 µL
Target:	HADH
Reactivity:	Human
Host:	Rabbit
Clonality:	Polyclonal
Conjugate:	This HADH antibody is un-conjugated
Application:	Western Blotting (WB), Immunoprecipitation (IP), Immunohistochemistry (Paraffin-embedded Sections) (IHC (p)), Immunofluorescence (IF), Immunocytochemistry (ICC)

## Product Details

Immunogen:	Recombinant protein encompassing a sequence within the center region of human HADH. The exact sequence is proprietary.
Isotype:	IgG
Cross-Reactivity:	Human, Mouse, Rat
Characteristics:	Rabbit Polyclonal antibody to HADH (hydroxyacyl-CoA dehydrogenase) HADH antibody
Purification:	Purified by antigen-affinity chromatography.
Grade:	KO Validated

## Target Details

Target:	HADH
---------	------

## Target Details

Alternative Name:	hydroxyacyl-CoA dehydrogenase ( <a href="#">HADH Products</a> )
Background:	<p>This gene is a member of the 3-hydroxyacyl-CoA dehydrogenase gene family. The encoded protein functions in the mitochondrial matrix to catalyze the oxidation of straight-chain 3-hydroxyacyl-CoAs as part of the beta-oxidation pathway. Its enzymatic activity is highest with medium-chain-length fatty acids. Mutations in this gene cause one form of familial hyperinsulinemic hypoglycemia. The human genome contains a related pseudogene.</p> <p>Cellular Localization: Mitochondrion matrix</p>
Molecular Weight:	34 kDa
Gene ID:	3033
UniProt:	<a href="#">Q16836</a>
Pathways:	<a href="#">Negative Regulation of Hormone Secretion</a> , <a href="#">Monocarboxylic Acid Catabolic Process</a>

## Application Details

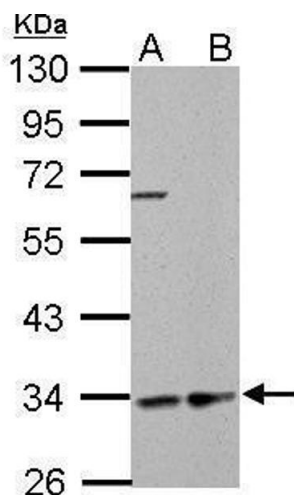
Application Notes:	WB: 1:500-1:3000. ICC/IF: 1:100-1:1000. IHC-P: 1:100-1:1000. IP: 1:100-1:500. Optimal dilutions/concentrations should be determined by the researcher. Not tested in other applications.
Comment:	<p>Positive Control: GL261 , C8D30 , PC-12 , 293T , A431 , HeLa , HepG2</p> <p>Validation: KO/KD</p>
Restrictions:	For Research Use only

## Handling

Format:	Liquid
Concentration:	1 mg/mL
Buffer:	1XPBS ( pH 7), 1 % BSA, 20 % Glycerol, 0.01 % Thimerosal
Preservative:	Thimerosal (Merthiolate)
Precaution of Use:	This product contains Thimerosal (Merthiolate): a POISONOUS AND HAZARDOUS SUBSTANCE which should be handled by trained staff only.
Storage:	4 °C,-20 °C
Storage Comment:	Store as concentrated solution. Centrifuge briefly prior to opening vial. For short-term storage

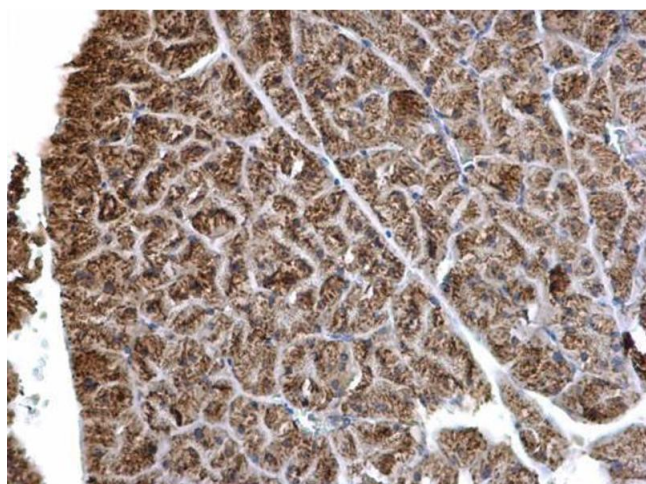
(1-2 weeks), store at 4°C. For long-term storage, aliquot and store at -20°C or below. Avoid multiple freeze-thaw cycles.

## Images



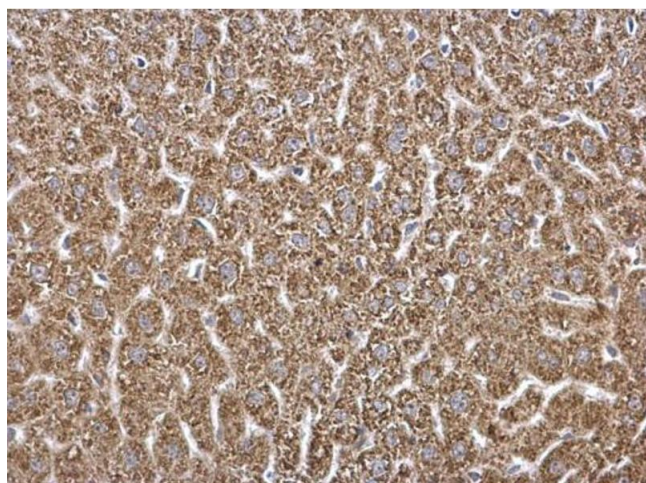
### Western Blotting

**Image 1.** WB Image HADH antibody detects HADH protein by Western blot analysis. A. 30 µg GL261 whole cell lysate/extract B. 30 ug C8D30 whole cell lysate/extract 10 % SDS-PAGE HADH antibody , dilution: 1:1000



### Immunohistochemistry

**Image 2.** IHC-P Image HADH antibody detects HADH protein at mitochondria on mouse liver by immunohistochemical analysis. Sample: Paraffin-embedded mouse pancreas. HADH antibody , dilution: 1:500.



### Immunohistochemistry

**Image 3.** IHC-P Image HADH antibody detects HADH protein at mitochondria on mouse pancreas by immunohistochemical analysis. Sample: Paraffin-embedded mouse liver. HADH antibody , dilution: 1:500.

Please check the [product details page](#) for more images. Overall 7 images are available for ABIN2856051.