

Datasheet for ABIN2856053
anti-CPB1 antibody



[Go to Product page](#)

1 Image

Overview

Quantity:	100 µL
Target:	CPB1
Reactivity:	Human
Host:	Rabbit
Clonality:	Polyclonal
Conjugate:	This CPB1 antibody is un-conjugated
Application:	Western Blotting (WB)

Product Details

Immunogen:	Recombinant protein encompassing a sequence within the center region of human Carboxypeptidase B. The exact sequence is proprietary.
Isotype:	IgG
Cross-Reactivity:	Human, Mouse, Rat
Characteristics:	Rabbit polyclonal antibody to Carboxypeptidase B (carboxypeptidase B1 (tissue)) Carboxypeptidase B antibody [N1C1]
Purification:	Purified by antigen-affinity chromatography.

Target Details

Target:	CPB1
Alternative Name:	carboxypeptidase B1 (CPB1 Products)

Target Details

Background: Three different procarboxypeptidases A and two different procarboxypeptidases B have been isolated. The B1 and B2 forms differ from each other mainly in isoelectric point. Carboxypeptidase B1 is a highly tissue-specific protein and is a useful serum marker for acute pancreatitis and dysfunction of pancreatic transplants. It is not elevated in pancreatic carcinoma.

Cellular Localization: Secreted

Molecular Weight: 47 kDa

Gene ID: 1360

UniProt: [P15086](#)

Application Details

Application Notes: WB: 1:500-1:3000. Optimal dilutions/concentrations should be determined by the researcher. Not tested in other applications.

Comment: Positive Control: AsPC-1 , mouse pancreas , rat pancreas

Restrictions: For Research Use only

Handling

Format: Liquid

Concentration: 1 mg/mL

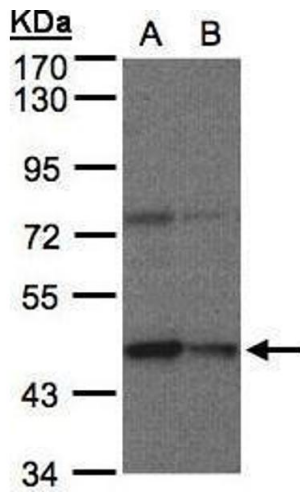
Buffer: 0.1M Tris-Glycine (pH 7), 10 % Glycerol, 0.01 % Thimerosal

Preservative: Thimerosal (Merthiolate)

Precaution of Use: This product contains Thimerosal (Merthiolate): a POISONOUS AND HAZARDOUS SUBSTANCE which should be handled by trained staff only.

Storage: 4 °C,-20 °C

Storage Comment: Store as concentrated solution. Centrifuge briefly prior to opening vial. For short-term storage (1-2 weeks), store at 4°C. For long-term storage, aliquot and store at -20°C or below. Avoid multiple freeze-thaw cycles.



Western Blotting

Image 1. WB Image Sample(30 µg of whole cell lysate)
A:HeLa S3, B:Hep G2, 7.5% SDS PAGE antibody diluted at 1:200