

Datasheet for ABIN2856057  
**anti-CYP46A1 antibody (Center)**[Go to Product page](#)

## 1 Image

## Overview

Quantity:	100 µL
Target:	CYP46A1
Binding Specificity:	Center
Reactivity:	Mouse
Host:	Rabbit
Clonality:	Polyclonal
Conjugate:	This CYP46A1 antibody is un-conjugated
Application:	Western Blotting (WB)

## Product Details

Immunogen:	Recombinant protein encompassing a sequence within the center region of human CYP46A1. The exact sequence is proprietary.
Isotype:	IgG
Cross-Reactivity:	Human
Cross-Reactivity (Details):	Human (100 %)
Characteristics:	Rabbit Polyclonal antibody to CYP46A1 (cytochrome P450, family 46, subfamily A, polypeptide 1) CYP46A1 antibody [N1C2]
Purification:	Purified by antigen-affinity chromatography.

## Target Details

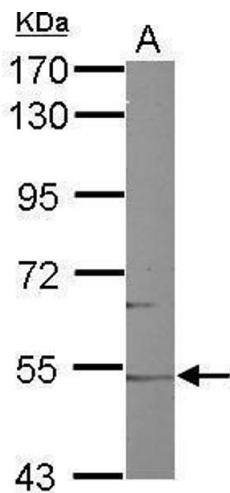
Target:	CYP46A1
Alternative Name:	CYP46A1 ( <a href="#">CYP46A1 Products</a> )
Background:	<p>This gene encodes a member of the cytochrome P450 superfamily of enzymes. The cytochrome P450 proteins are monooxygenases which catalyze many reactions involved in drug metabolism and synthesis of cholesterol, steroids and other lipids. This endoplasmic reticulum protein is expressed in the brain, where it converts cholesterol to 24S-hydroxycholesterol. While cholesterol cannot pass the blood-brain barrier, 24S-hydroxycholesterol can be secreted in the brain into the circulation to be returned to the liver for catabolism.</p> <p>Cellular Localization: Endoplasmic reticulum membrane , Microsome membrane</p>
Molecular Weight:	57 kDa
Gene ID:	10858

## Application Details

Application Notes:	<p>Suggested dilution Reference Western blot 1:500-1:3000* Not tested in other applications.</p> <p>*Optimal dilutions/concentrations should be determined by the researcher.Suggested dilutionReferenceWestern blot1:500-1:3000*</p>
Comment:	Positive Control: Mouse brain
Restrictions:	For Research Use only

## Handling

Format:	Liquid
Concentration:	1 mg/mL
Buffer:	0.1M Tris, 0.1M Glycine, 10 % Glycerol ( pH 7). 0.01 % Thimerosal was added as a preservative.
Preservative:	Thimerosal (Merthiolate)
Precaution of Use:	This product contains Thimerosal (Merthiolate): a POISONOUS AND HAZARDOUS SUBSTANCE which should be handled by trained staff only.
Storage:	-20 °C
Storage Comment:	Keep as concentrated solution. Aliquot and store at -20°C or below. Avoid multiple freeze-thaw cycles.



Western Blotting

**Image 1.** WB Image Sample (50 ug of whole cell lysate) A:  
Mouse brain 7.5% SDS PAGE antibody diluted at 1:1000