

Datasheet for ABIN2856060

anti-POU2F1 antibody

4 Images

1 Publication

[Go to Product page](#)

Overview

Quantity:	100 µL
Target:	POU2F1
Reactivity:	Human
Host:	Rabbit
Clonality:	Polyclonal
Conjugate:	This POU2F1 antibody is un-conjugated
Application:	Western Blotting (WB), Immunohistochemistry (Paraffin-embedded Sections) (IHC (p)), Immunoprecipitation (IP), Immunocytochemistry (ICC), Immunofluorescence (IF)

Product Details

Immunogen:	Recombinant protein encompassing a sequence within the center region of human OCT1. The exact sequence is proprietary.
Isotype:	IgG
Cross-Reactivity:	Human, Rat
Characteristics:	Rabbit Polyclonal antibody to OCT1 (POU domain, class 2, transcription factor 1) OCT1 antibody
Purification:	Purified by antigen-affinity chromatography.
Grade:	KO Validated

Target Details

Target:	POU2F1
---------	--------

Target Details

Alternative Name:	POU class 2 homeobox 1 (POU2F1 Products)
Background:	<p>The OCT1 transcription factor was among the first identified members of the POU transcription factor family (summarized by Sturm et al., 1993 [PubMed 8314572]). Members of this family contain the POU domain, a 160-amino acid region necessary for DNA binding to the octameric sequence ATGCAAT.[supplied by OMIM]</p> <p>Cellular Localization: Nucleus</p>
Molecular Weight:	76 kDa
Gene ID:	5451
UniProt:	P14859

Application Details

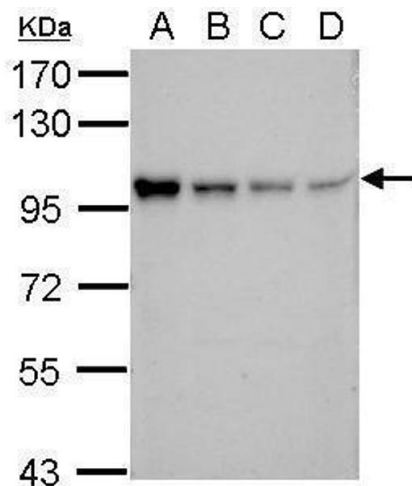
Application Notes:	WB: 1:500-1:3000. ICC/IF: 1:100-1:1000. IHC-P: 1:100-1:1000. IP: 1:100-1:500. Optimal dilutions/concentrations should be determined by the researcher. Not tested in other applications.
Comment:	<p>Positive Control: 293T , A431 , HeLa , HepG2</p> <p>Validation: KO/KD</p>
Restrictions:	For Research Use only

Handling

Format:	Liquid
Concentration:	0.49 mg/mL
Buffer:	1XPBS (pH 7), 1 % BSA, 20 % Glycerol, 0.025 % ProClin 300
Preservative:	ProClin
Precaution of Use:	This product contains ProClin: a POISONOUS AND HAZARDOUS SUBSTANCE which should be handled by trained staff only.
Storage:	4 °C,-20 °C
Storage Comment:	Store as concentrated solution. Centrifuge briefly prior to opening vial. For short-term storage (1-2 weeks), store at 4°C. For long-term storage, aliquot and store at -20°C or below. Avoid multiple freeze-thaw cycles.

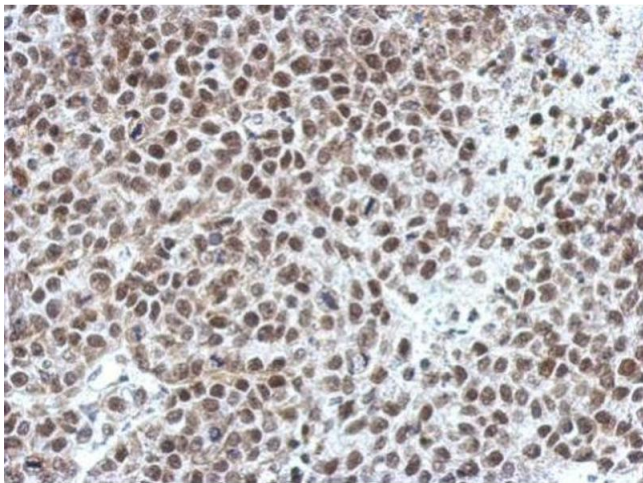
Product cited in: Kitano, Kino, Yamamoto, Takitani, Miyoshi, Ishida, Saito, Arima, Satoh: "Bioinformatics Data Mining Approach Suggests Coexpression of AGTPBP1 with an ALS-linked Gene C9orf72." in: **Journal of central nervous system disease**, Vol. 7, pp. 15-26, (2015) ([PubMed](#)).

Images



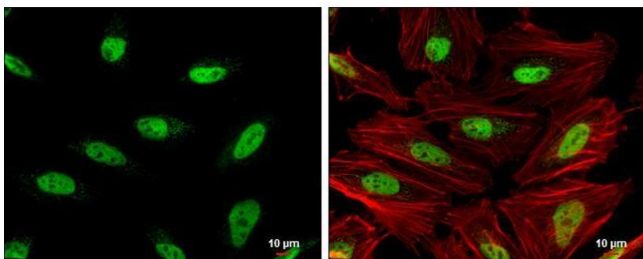
Western Blotting

Image 1. WB Image Sample (30 ug of whole cell lysate) A: 293T B: A431 C: HeLa D: HepG2 7.5% SDS PAGE antibody diluted at 1:1000



Immunohistochemistry

Image 2. IHC-P Image Immunohistochemical analysis of paraffin-embedded Hela xenograft, using OCT1, antibody at 1:750 dilution.



Immunofluorescence

Image 3. ICC/IF Image OCT1 antibody detects OCT1 protein at nucleus by immunofluorescent analysis. Sample: HeLa cells were fixed in 4% paraformaldehyde at RT for 15 min. Green: OCT1 protein stained by OCT1 antibody, diluted at 1:500. Red: phalloidin, a cytoskeleton marker, stained by () diluted at 1:200. Blue: Hoechst 33342 staining. Scale bar = 10 μm.

Images

Please check the [product details page](#) for more images. Overall 4 images are available for ABIN2856060.