

Datasheet for ABIN2856063

anti-MTMR14 antibody**2** Images[Go to Product page](#)

Overview

Quantity:	100 µL
Target:	MTMR14
Reactivity:	Human
Host:	Rabbit
Clonality:	Polyclonal
Conjugate:	This MTMR14 antibody is un-conjugated
Application:	Western Blotting (WB), Immunohistochemistry (Paraffin-embedded Sections) (IHC (p))

Product Details

Immunogen:	Recombinant protein encompassing a sequence within the center region of human MTMR14. The exact sequence is proprietary.
Isotype:	IgG
Cross-Reactivity:	Human
Characteristics:	Rabbit Polyclonal antibody to MTMR14 (myotubularin related protein 14) MTMR14 antibody
Purification:	Purified by antigen-affinity chromatography.

Target Details

Target:	MTMR14
Alternative Name:	myotubularin related protein 14 (MTMR14 Products)

Target Details

Background: This gene encodes a myotubularin-related protein. The encoded protein is a phosphoinositide phosphatase that specifically dephosphorylates phosphatidylinositol 3,5-biphosphate and phosphatidylinositol 3-phosphate. Mutations in this gene are correlated with autosomal dominant centronuclear myopathy. Alternate splicing results in multiple transcript variants. A pseudogene of this gene is found on chromosome 18.

Cellular Localization: Cytoplasm

Molecular Weight: 72 kDa

Gene ID: 64419

UniProt: [Q8NCE2](#)

Pathways: [Inositol Metabolic Process](#)

Application Details

Application Notes: WB: 1:500-1:3000. IHC-P: 1:100-1:1000. Optimal dilutions/concentrations should be determined by the researcher. Not tested in other applications.

Comment: Positive Control: Molt-4

Restrictions: For Research Use only

Handling

Format: Liquid

Concentration: 1 mg/mL

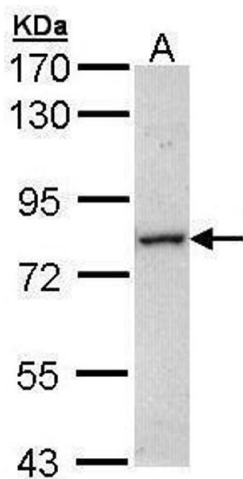
Buffer: 0.1M Tris-Glycine (pH 7), 10 % Glycerol, 0.01 % Thimerosal

Preservative: Thimerosal (Merthiolate)

Precaution of Use: This product contains Thimerosal (Merthiolate): a POISONOUS AND HAZARDOUS SUBSTANCE which should be handled by trained staff only.

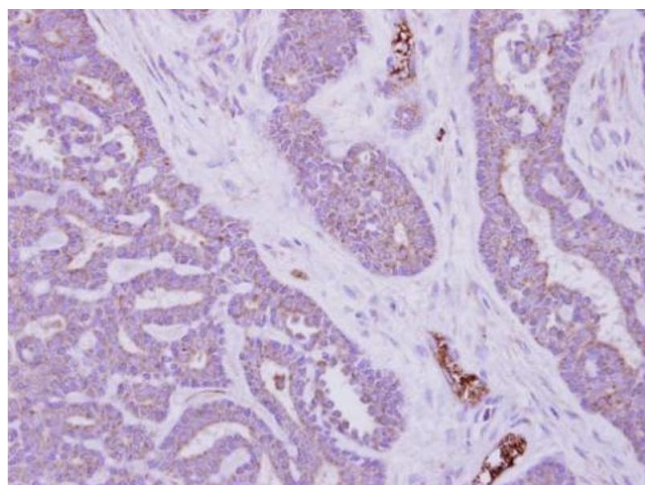
Storage: 4 °C,-20 °C

Storage Comment: Store as concentrated solution. Centrifuge briefly prior to opening vial. For short-term storage (1-2 weeks), store at 4°C. For long-term storage, aliquot and store at -20°C or below. Avoid multiple freeze-thaw cycles.



Western Blotting

Image 1. WB Image Sample (30 ug of whole cell lysate) A: Molt-4 , 7.5% SDS PAGE antibody diluted at 1:2000



Immunohistochemistry

Image 2. IHC-P Image Immunohistochemical analysis of paraffin-embedded human colon carcinoma, using MTMR14, antibody at 1:500 dilution.