

Datasheet for ABIN2856065

**anti-MMP19 antibody**[Go to Product page](#)**2** Images

## Overview

Quantity:	100 µL
Target:	MMP19
Reactivity:	Human
Host:	Rabbit
Clonality:	Polyclonal
Conjugate:	This MMP19 antibody is un-conjugated
Application:	Western Blotting (WB), Immunohistochemistry (Paraffin-embedded Sections) (IHC (p))

## Product Details

Immunogen:	Recombinant protein encompassing a sequence within the center region of human MMP19. The exact sequence is proprietary.
Isotype:	IgG
Cross-Reactivity:	Human
Characteristics:	Rabbit Polyclonal antibody to MMP19 (matrix metalloproteinase 19) MMP19 antibody
Purification:	Purified by antigen-affinity chromatography.

## Target Details

Target:	MMP19
Alternative Name:	matrix metalloproteinase 19 ( <a href="#">MMP19 Products</a> )

## Target Details

**Background:** Proteins of the matrix metalloproteinase (MMP) family are involved in the breakdown of extracellular matrix in normal physiological processes, such as embryonic development, reproduction, and tissue remodeling, as well as in disease processes, such as arthritis and metastasis. Most MMP's are secreted as inactive proproteins which are activated when cleaved by extracellular proteinases. This protein is expressed in human epidermis and it has a role in cellular proliferation as well as migration and adhesion to type I collagen. Multiple transcript variants encoding distinct isoforms have been identified for this gene.

Cellular Localization: Secreted , extracellular space , extracellular matrix

**Molecular Weight:** 57 kDa

**Gene ID:** 4327

**UniProt:** [Q99542](#)

## Application Details

**Application Notes:** WB: 1:500-1:3000. IHC-P: 1:100-1:1000. Optimal dilutions/concentrations should be determined by the researcher. Not tested in other applications.

**Comment:** Positive Control: MMP19-transfected 293T

**Restrictions:** For Research Use only

## Handling

**Format:** Liquid

**Concentration:** 1 mg/mL

**Buffer:** 1XPBS ( pH 7), 1 % BSA, 20 % Glycerol, 0.01 % Thimerosal

**Preservative:** Thimerosal (Merthiolate)

**Precaution of Use:** This product contains Thimerosal (Merthiolate): a POISONOUS AND HAZARDOUS SUBSTANCE which should be handled by trained staff only.

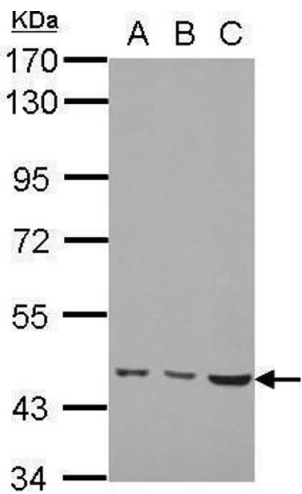
**Storage:** 4 °C,-20 °C

**Storage Comment:** Store as concentrated solution. Centrifuge briefly prior to opening vial. For short-term storage (1-2 weeks), store at 4°C. For long-term storage, aliquot and store at -20°C or below. Avoid multiple freeze-thaw cycles.



Immunohistochemistry

**Image 1.** IHC-P Image MMP19 antibody detects MMP19 protein at cytosol on human hepatoma by immunohistochemical analysis. Sample: Paraffin-embedded human hepatoma. MMP19 antibody , dilution: 1:500. Scale bar = 100  $\mu$ m.



Western Blotting

**Image 2.** WB Image Sample (30 ug of whole cell lysate) A: H1299 B: HCT116 C: MCF-7 7.5% SDS PAGE antibody diluted at 1:1000