

Datasheet for ABIN2856066  
**anti-NANS antibody (Center)**

## 3 Images

[Go to Product page](#)

## Overview

Quantity:	100 µL
Target:	NANS
Binding Specificity:	Center
Reactivity:	Human
Host:	Rabbit
Clonality:	Polyclonal
Conjugate:	This NANS antibody is un-conjugated
Application:	Western Blotting (WB), Immunohistochemistry (Paraffin-embedded Sections) (IHC (p)), Immunofluorescence (IF), Immunocytochemistry (ICC)

## Product Details

Immunogen:	Recombinant protein encompassing a sequence within the center region of human NANS. The exact sequence is proprietary.
Isotype:	IgG
Cross-Reactivity:	Mouse (Murine), Chicken, Pig (Porcine), Rat (Rattus), Cow (Bovine)
Cross-Reactivity (Details):	Mouse (97 %), Chicken (88 %), Pig (97 %), Rat (97 %), Bovine (97 %)
Characteristics:	Rabbit polyclonal antibody to NANS (N-acetylneuraminic acid synthase) NANS antibody [N1C3]
Purification:	Purified by antigen-affinity chromatography.

## Target Details

Target:	NANS
Alternative Name:	NANS ( <a href="#">NANS Products</a> )
Background:	This gene encodes an enzyme that functions in the biosynthetic pathways of sialic acids. In vitro, the encoded protein uses N-acetylmannosamine 6-phosphate and mannose 6-phosphate as substrates to generate phosphorylated forms of N-acetylneuraminic acid (Neu5Ac) and 2-keto-3-deoxy-D-glycero-D-galacto-nononic acid (KDN), respectively, however, it exhibits much higher activity toward the Neu5Ac phosphate product. In insect cells, expression of this gene results in Neu5Ac and KDN production. This gene is related to the E. coli sialic acid synthase gene neuB, and it can partially restore sialic acid synthase activity in an E. coli neuB-negative mutant.
Molecular Weight:	40 kDa
Gene ID:	54187

## Application Details

Application Notes:	Suggested dilution Reference ICC/IF 1:100-1:1000* IHC (Formalin-fixed paraffin-embedded sections) 1:100-1:1000* Western blot 1:500-1:3000* Not tested in other applications. *Optimal dilutions/concentrations should be determined by the researcher.Suggested dilutionReferenceICC/IF1:100-1:1000* IHC (Formalin-fixed paraffin-embedded sections)1:100-1:1000* Western blot1:500-1:3000*
Comment:	Positive Control: A431 , HeLa , HepG2
Restrictions:	For Research Use only

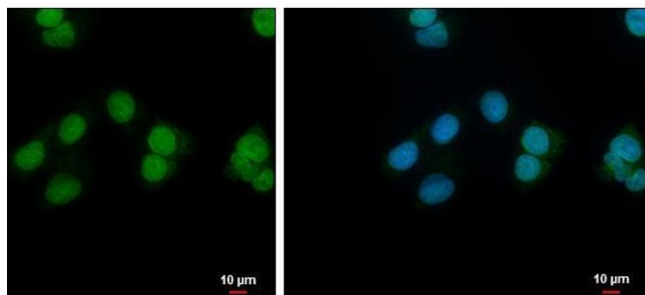
## Handling

Format:	Liquid
Concentration:	0.21 mg/mL
Buffer:	0.1M Tris, 0.1M Glycine, 10 % Glycerol ( pH 7). 0.01 % Thimerosal was added as a preservative.
Preservative:	Thimerosal (Merthiolate)
Precaution of Use:	This product contains Thimerosal (Merthiolate): a POISONOUS AND HAZARDOUS SUBSTANCE which should be handled by trained staff only.
Storage:	-20 °C

## Handling

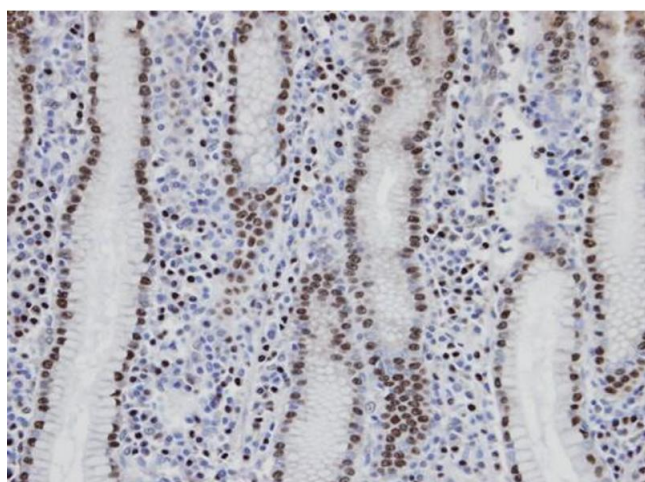
Storage Comment: Keep as concentrated solution. Aliquot and store at -20°C or below. Avoid multiple freeze-thaw cycles.

## Images



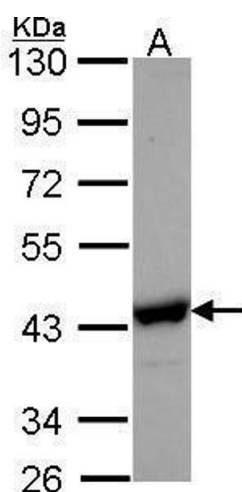
### Immunofluorescence

**Image 1.** ICC/IF Image NANS antibody [N1C3] detects NANS protein at nucleus by immunofluorescent analysis. Sample: HepG2 cells were fixed in 4% paraformaldehyde at RT for 15 min. Green: NANS protein stained by NANS antibody [N1C3] , diluted at 1:500. Blue: Hoechst 33342 staining. Scale bar = 10 μm.



### Immunohistochemistry

**Image 2.** IHC-P Image Immunohistochemical analysis of paraffin-embedded human normal gastric epithelium (gland), using NANS, antibody at 1:100 dilution.



### Western Blotting

**Image 3.** WB Image Sample (30 ug of whole cell lysate) A: Hep G2 , 10% SDS PAGE NANS antibody antibody diluted at 1:1000