

Datasheet for ABIN2856068

anti-LTA4H antibody[Go to Product page](#)**1** Image

Overview

Quantity:	100 µL
Target:	LTA4H
Reactivity:	Human
Host:	Rabbit
Clonality:	Polyclonal
Conjugate:	This LTA4H antibody is un-conjugated
Application:	Western Blotting (WB)

Product Details

Immunogen:	Recombinant protein encompassing a sequence within the center region of human LTA4H. The exact sequence is proprietary.
Isotype:	IgG
Cross-Reactivity:	Human
Characteristics:	Rabbit Polyclonal antibody to Leukotriene A4 hydrolase (leukotriene A4 hydrolase) Leukotriene A4 hydrolase antibody
Purification:	Purified by antigen-affinity chromatography.

Target Details

Target:	LTA4H
Alternative Name:	leukotriene A4 hydrolase (LTA4H Products)

Target Details

Background: Hydrolyzes an epoxide moiety of leukotriene A4 (LTA-4) to form leukotriene B4 (LTB-4). The enzyme also has some peptidase activity.

Cellular Localization: Cytoplasm

Molecular Weight: 69 kDa

Gene ID: 4048

UniProt: [P09960](#)

Application Details

Application Notes: WB: 1:500-1:3000. Optimal dilutions/concentrations should be determined by the researcher.
Not tested in other applications.

Comment: Positive Control: Jurkat , Raji

Restrictions: For Research Use only

Handling

Format: Liquid

Concentration: 0.86 mg/mL

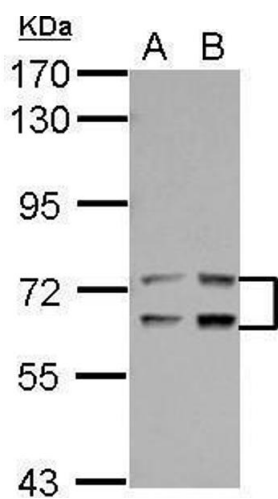
Buffer: 0.1M Tris-Glycine (pH 7), 20 % Glycerol, 0.01 % Thimerosal

Preservative: Thimerosal (Merthiolate)

Precaution of Use: This product contains Thimerosal (Merthiolate): a POISONOUS AND HAZARDOUS SUBSTANCE which should be handled by trained staff only.

Storage: 4 °C, -20 °C

Storage Comment: Store as concentrated solution. Centrifuge briefly prior to opening vial. For short-term storage (1-2 weeks), store at 4°C. For long-term storage, aliquot and store at -20°C or below. Avoid multiple freeze-thaw cycles.



Western Blotting

Image 1. WB Image Sample (30 ug of whole cell lysate) A: Jurkat B: Raji 7.5% SDS PAGE antibody diluted at 1:1000