

Datasheet for ABIN2856072
anti-PBX1 antibody (Center)[Go to Product page](#)

1 Image

Overview

Quantity:	100 µL
Target:	PBX1
Binding Specificity:	Center
Reactivity:	Human
Host:	Rabbit
Clonality:	Polyclonal
Conjugate:	This PBX1 antibody is un-conjugated
Application:	Immunofluorescence (IF), Immunocytochemistry (ICC)

Product Details

Immunogen:	Recombinant protein encompassing a sequence within the center region of human PBX1. The exact sequence is proprietary.
Isotype:	IgG
Cross-Reactivity:	Cow (Bovine), Chicken, Mouse (Murine), Rat (Rattus)
Cross-Reactivity (Details):	Mouse (100 %), Rat (100 %), Chicken (100 %), Bovine (100 %)
Characteristics:	Rabbit Polyclonal antibody to PBX1 (pre-B-cell leukemia homeobox 1) PBX1 antibody [N2C3]
Purification:	Purified by antigen-affinity chromatography.

Target Details

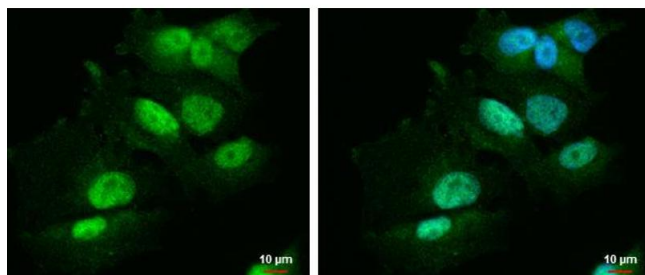
Target:	PBX1
Alternative Name:	PBX1 (PBX1 Products)
Background:	Cellular Localization: Nucleus
Molecular Weight:	47 kDa
Gene ID:	5087

Application Details

Application Notes:	Suggested dilution Reference ICC/IF 1:100-1:1000* Not tested in other applications. *Optimal dilutions/concentrations should be determined by the researcher.Suggested dilutionReferenceICC/IF1:100-1:1000*
Restrictions:	For Research Use only

Handling

Format:	Liquid
Concentration:	1 mg/mL
Buffer:	0.1M Tris, 0.1M Glycine, 10 % Glycerol (pH 7). 0.01 % Thimerosal was added as a preservative.
Preservative:	Thimerosal (Merthiolate)
Precaution of Use:	This product contains Thimerosal (Merthiolate): a POISONOUS AND HAZARDOUS SUBSTANCE which should be handled by trained staff only.
Storage:	-20 °C
Storage Comment:	Keep as concentrated solution. Aliquot and store at -20°C or below. Avoid multiple freeze-thaw cycles.



Immunofluorescence

Image 1. ICC/IF Image PBX1 antibody [N2C3] detects PBX1 protein at nucleus and cytoplasm by immunofluorescent analysis. Sample: SK-N-AS cells were fixed in 4% paraformaldehyde at RT for 15 min. Green: PBX1 protein stained by PBX1 antibody [N2C3], diluted at 1:500. Blue: Hoechst 33342 staining.