

Datasheet for ABIN2856073

anti-MMP17 antibody

4 Images

[Go to Product page](#)

Overview

Quantity:	100 µL
Target:	MMP17
Reactivity:	Human
Host:	Rabbit
Clonality:	Polyclonal
Conjugate:	This MMP17 antibody is un-conjugated
Application:	Western Blotting (WB), Immunohistochemistry (Paraffin-embedded Sections) (IHC (p)), Immunocytochemistry (ICC), Immunofluorescence (IF)

Product Details

Immunogen:	Recombinant protein encompassing a sequence within the center region of human MMP17. The exact sequence is proprietary.
Isotype:	IgG
Cross-Reactivity:	Human
Characteristics:	Rabbit Polyclonal antibody to MMP17 (matrix metalloproteinase 17 (membrane-inserted)) MMP17 antibody [N2C2], Internal
Purification:	Purified by antigen-affinity chromatography.

Target Details

Target:	MMP17
Alternative Name:	matrix metalloproteinase 17 (MMP17 Products)

Target Details

Background: Proteins of the matrix metalloproteinase (MMP) family are involved in the breakdown of extracellular matrix in normal physiological processes, such as embryonic development, reproduction, and tissue remodeling, as well as in disease processes, such as arthritis and metastasis. Most MMP's are secreted as inactive proproteins which are activated when cleaved by extracellular proteinases. The protein encoded by this gene is considered a member of the membrane-type MMP (MT-MMP) subfamily. However, this protein is unique among the MT-MMP's in that it is a GPI-anchored protein rather than a transmembrane protein. The protein activates MMP-2 by cleavage.

Cellular Localization: Isoform Long: Cell membrane, Lipid-anchor , GPI-anchor, Extracellular side , Secreted , extracellular space , extracellular matrix

Molecular Weight: 67 kDa

Gene ID: 4326

UniProt: [Q9ULZ9](#)

Application Details

Application Notes: WB: 1:500-1:3000. ICC/IF: 1:100-1:1000. IHC-P: 1:100-1:1500. Optimal dilutions/concentrations should be determined by the researcher. Not tested in other applications.

Comment: Positive Control: HeLa

Restrictions: For Research Use only

Handling

Format: Liquid

Concentration: 0.74 mg/mL

Buffer: 1XPBS (pH 7), 1 % BSA, 20 % Glycerol, 0.01 % Thimerosal

Preservative: Thimerosal (Merthiolate)

Precaution of Use: This product contains Thimerosal (Merthiolate): a POISONOUS AND HAZARDOUS SUBSTANCE which should be handled by trained staff only.

Storage: 4 °C,-20 °C

Storage Comment: Store as concentrated solution. Centrifuge briefly prior to opening vial. For short-term storage (1-2 weeks), store at 4°C. For long-term storage, aliquot and store at -20°C or below. Avoid

multiple freeze-thaw cycles.

Images

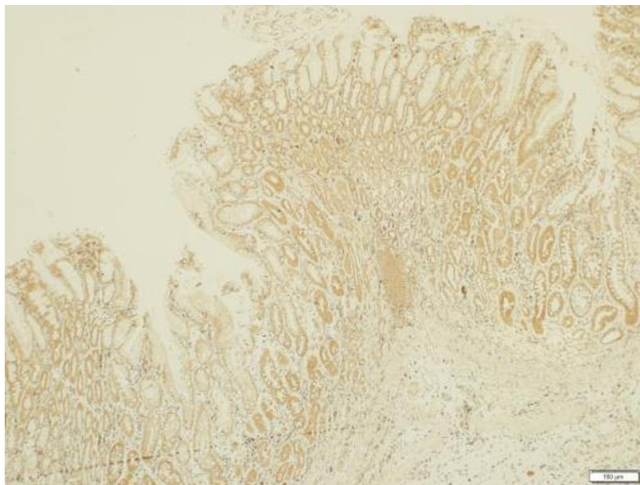
**Immunohistochemistry**

Image 1. IHC-P Image MMP17 antibody [N2C2], Internal detects MMP17 protein at cytosol on human gastric carcinoma by immunohistochemical analysis. Sample: Paraffin-embedded human gastric carcinoma. MMP17 antibody [N2C2], Internal, dilution: 1:1500. Scale bar = 100 μ m.

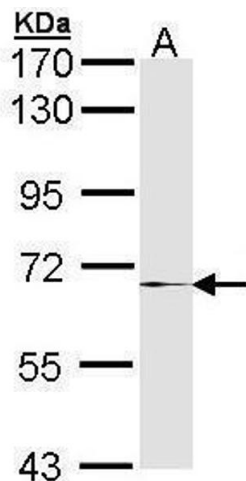
**Western Blotting**

Image 2. WB Image Sample (30 μ g of whole cell lysate) A: HeLa 7.5% SDS PAGE antibody diluted at 1:1000

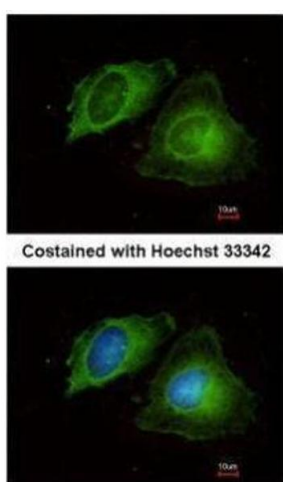
**Immunofluorescence**

Image 3. ICC/IF Image Immunofluorescence analysis of methanol-fixed HeLa, using MMP17, antibody at 1:200 dilution.

Please check the [product details page](#) for more images. Overall 4 images are available for ABIN2856073.