

Datasheet for ABIN2856075

**anti-ZEB1 antibody**

4 Images

4 Publications

[Go to Product page](#)

## Overview

Quantity:	100 µL
Target:	ZEB1
Reactivity:	Human
Host:	Rabbit
Clonality:	Polyclonal
Conjugate:	This ZEB1 antibody is un-conjugated
Application:	Western Blotting (WB), Immunofluorescence (IF), Immunoprecipitation (IP), Immunocytochemistry (ICC), Chromatin Immunoprecipitation (ChIP)

## Product Details

Immunogen:	Recombinant protein encompassing a sequence within the center region of human ZEB1. The exact sequence is proprietary.
Isotype:	IgG
Cross-Reactivity:	Human, Mouse
Characteristics:	Rabbit Polyclonal antibody to ZEB1 (zinc finger E-box binding homeobox 1) ZEB1 antibody [N2C1], Internal
Purification:	Purified by antigen-affinity chromatography.
Grade:	KO Validated

## Target Details

Target:	ZEB1
---------	------

## Target Details

Alternative Name:	zinc finger E-box binding homeobox 1 ( <a href="#">ZEB1 Products</a> )
Background:	ZEB1 encodes a zinc finger transcription factor that represses T-lymphocyte-specific IL2 gene (MIM 147680) expression by binding to a negative regulatory domain 100 nucleotides 5-prime of the IL2 transcription start site (Williams et al., 1991 [PubMed 1840704]).[supplied by OMIM]  Cellular Localization: Nucleus
Molecular Weight:	124 kDa
Gene ID:	6935
UniProt:	<a href="#">P37275</a>
Pathways:	<a href="#">Regulation of Muscle Cell Differentiation</a>

## Application Details

Application Notes:	WB: 1:500-1:3000. ICC/IF: 1:100-1:1000. IP: 1:100-1:500. Optimal dilutions/concentrations should be determined by the researcher. Not tested in other applications.
Comment:	Positive Control: 293T , HeLa , HepG2 , Neuro2A , NIH-3T3 , C2C12 Validation: Comparison, KO/KD
Restrictions:	For Research Use only

## Handling

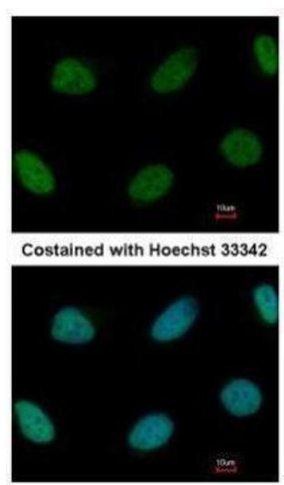
Format:	Liquid
Concentration:	0.1 mg/mL
Buffer:	1XPBS ( pH 7), 20 % Glycerol, 0.025 % ProClin 300
Preservative:	ProClin
Precaution of Use:	This product contains ProClin: a POISONOUS AND HAZARDOUS SUBSTANCE which should be handled by trained staff only.
Storage:	4 °C,-20 °C
Storage Comment:	Store as concentrated solution. Centrifuge briefly prior to opening vial. For short-term storage (1-2 weeks), store at 4°C. For long-term storage, aliquot and store at -20°C or below. Avoid multiple freeze-thaw cycles.

Publications

Product cited in: Glaeser, Urban, Fenech, Voloshanenko, Kranz, Lari, Christianson, Boutros: "ERAD-dependent control of the Wnt secretory factor Evi." in: **The EMBO journal**, Vol. 37, Issue 4, (2018) ([PubMed](#) ).

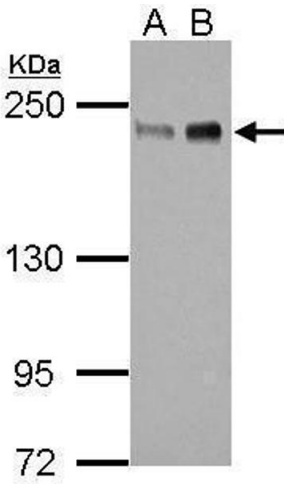
Jain, Noordam, Hoshi, Vallania, Conrad: "Validating single-cell genomics for the study of renal development." in: **Kidney international**, Vol. 86, Issue 5, pp. 1049-55, (2015) ([PubMed](#)).

Images



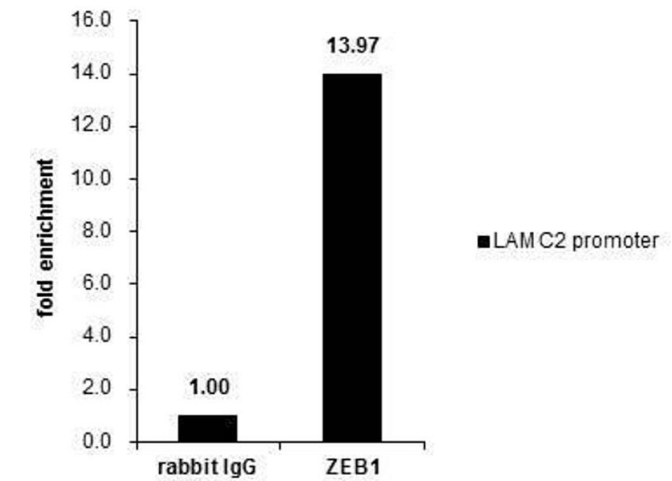
**Immunofluorescence**

**Image 1.** ICC/IF Image Immunofluorescence analysis of paraformaldehyde-fixed HeLa, using ZEB1, antibody at 1:1000 dilution.



**Western Blotting**

**Image 2.** WB Image Sample (30 ug of whole cell lysate) A: 293T B: HeLa 5% SDS PAGE antibody diluted at 1:1000



Chromatin Immunoprecipitation

**Image 3.** ChIP Image Cross-linked ChIP was performed with HeLa chromatin extract and 5 µg of either control rabbit IgG or anti-ZEB1 antibody. The precipitated DNA was detected by PCR with primer set targeting to LAMC2 promotor.

Please check the [product details page](#) for more images. Overall 4 images are available for ABIN2856075.