



[Go to Product page](#)

Datasheet for ABIN2856076  
**anti-GABRA2 antibody (Center)**

1 Image

Overview

|                      |                                       |
|----------------------|---------------------------------------|
| Quantity:            | 100 µL                                |
| Target:              | GABRA2                                |
| Binding Specificity: | Center                                |
| Reactivity:          | Human                                 |
| Host:                | Rabbit                                |
| Clonality:           | Polyclonal                            |
| Conjugate:           | This GABRA2 antibody is un-conjugated |
| Application:         | Western Blotting (WB)                 |

Product Details

|                             |   |
|-----------------------------|---|
| Immunogen:                  | Recombinant protein encompassing a sequence within the center region of human GABA A Receptor alpha 2. The exact sequence is proprietary.             |
| Isotype:                    | IgG   |
| Cross-Reactivity:           | Mouse (Murine), Rat (Rattus), Rhesus Monkey, Cow (Bovine)   |
| Cross-Reactivity (Details): | Mouse (100 %), Rat (100 %), Rhesus Monkey (100 %), Bovine (100 %)   |
| Characteristics:            | Rabbit polyclonal antibody to GABA A Receptor alpha 2 (gamma-aminobutyric acid (GABA) A receptor, alpha 2)<br>GABA A Receptor alpha 2 antibody [N1C2] |
| Purification:               | Purified by antigen-affinity chromatography.  |

## Target Details

---

|                   |  |
|-------------------|--|
| Target:           | GABRA2   |
| Alternative Name: | GABA A Receptor alpha 2 ( <a href="#">GABRA2 Products</a> )  |
| Background:       | <p>GABA is the major inhibitory neurotransmitter in the mammalian brain where it acts at GABA-A receptors, which are ligand-gated chloride channels. Chloride conductance of these channels can be modulated by agents such as benzodiazepines that bind to the GABA-A receptor. At least 16 distinct subunits of GABA-A receptors have been identified. Alternatively spliced transcript variants encoding the same protein have been found for this gene.</p> <p>Cellular Localization: Cell junction , synapse , postsynaptic cell membrane, Multi-pass membrane protein , Cell membrane, Multi-pass membrane protein</p> |
| Molecular Weight: | 51 kDa   |
| Gene ID:          | 2555   |

## Application Details

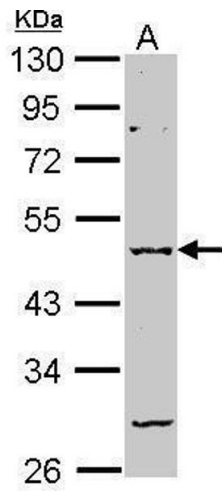
---

|                    |   |
|--------------------|---|
| Application Notes: | <p>Suggested dilution Reference Western blot 1:500-1:3000* Not tested in other applications.</p> <p>*Optimal dilutions/concentrations should be determined by the researcher.Suggested dilutionReferenceWestern blot1:500-1:3000*</p> |
| Comment:           | Positive Control: NT2D1   |
| Restrictions:      | For Research Use only   |

## Handling

---

|                    |  |
|--------------------|--|
| Format:            | Liquid   |
| Concentration:     | 1 mg/mL  |
| Buffer:            | 0.1M Tris, 0.1M Glycine, 10 % Glycerol ( pH 7). 0.01 % Thimerosal was added as a preservative.                                     |
| Preservative:      | Thimerosal (Merthiolate)   |
| Precaution of Use: | This product contains Thimerosal (Merthiolate): a POISONOUS AND HAZARDOUS SUBSTANCE which should be handled by trained staff only. |
| Storage:           | -20 °C   |
| Storage Comment:   | Keep as concentrated solution. Aliquot and store at -20°C or below. Avoid multiple freeze-thaw cycles.                             |



### Western Blotting

**Image 1.** WB Image Sample (30 ug of whole cell lysate) A:  
NT2D1 10% SDS PAGE antibody diluted at 1:1000