

Datasheet for ABIN2856078
anti-PPP1CB antibody (Center)

5 Images

[Go to Product page](#)

Overview

| | |
|----------------------|--|
| Quantity: | 100 µL |
| Target: | PPP1CB |
| Binding Specificity: | Center |
| Reactivity: | Human, Mouse |
| Host: | Rabbit |
| Clonality: | Polyclonal |
| Conjugate: | This PPP1CB antibody is un-conjugated |
| Application: | Western Blotting (WB), Immunofluorescence (IF), Immunohistochemistry (Paraffin-embedded Sections) (IHC (p)), Immunocytochemistry (ICC) |

Product Details

| | |
|-----------------------------|--|
| Immunogen: | Recombinant protein encompassing a sequence within the center region of human PPP1CB. The exact sequence is proprietary. |
| Isotype: | IgG |
| Cross-Reactivity: | Rat (Rattus), Xenopus laevis, Xenopus tropicalis, Pig (Porcine), Chicken, Rhesus Monkey, Cow (Bovine) |
| Cross-Reactivity (Details): | Rat (100 %), Xenopus laevis (100 %), Xenopus Tropicalis (100 %), Pig (100 %), Chicken (100 %), Rhesus Monkey (100 %), Bovine (100 %) |
| Characteristics: | Rabbit Polyclonal antibody to PPP1CB (protein phosphatase 1, catalytic subunit, beta isozyme) PPP1CB antibody |
| Purification: | Purified by antigen-affinity chromatography. |

Target Details

| | |
|-------------------|--|
| Target: | PPP1CB |
| Alternative Name: | PPP1CB (PPP1CB Products) |
| Background: | <p>The protein encoded by this gene is one of the three catalytic subunits of protein phosphatase 1 (PP1). PP1 is a serine/threonine specific protein phosphatase known to be involved in the regulation of a variety of cellular processes, such as cell division, glycogen metabolism, muscle contractility, protein synthesis, and HIV-1 viral transcription. Mouse studies suggest that PP1 functions as a suppressor of learning and memory. Two alternatively spliced transcript variants encoding distinct isoforms have been observed.</p> <p>Cellular Localization: Cytoplasm</p> |
| Molecular Weight: | 37 kDa |
| Gene ID: | 5500 |
| Pathways: | M Phase , Cellular Glucan Metabolic Process , Regulation of Carbohydrate Metabolic Process , Lipid Metabolism |

Application Details

| | |
|--------------------|--|
| Application Notes: | <p>Suggested dilution Reference ICC/IF 1:100-1:1000* IHC (Formalin-fixed paraffin-embedded sections) 1:100-1:1000* Western blot 1:500-1:3000* Not tested in other applications. *Optimal dilutions/concentrations should be determined by the researcher.Suggested dilutionReferenceICC/IF1:100-1:1000* IHC (Formalin-fixed paraffin-embedded sections)1:100-1:1000* Western blot1:500-1:3000*</p> |
| Comment: | Positive Control: 293T , A431 , H1299 , HeLaS3 , HepG2 , Molt-4 , Raji , mouse brain |
| Restrictions: | For Research Use only |

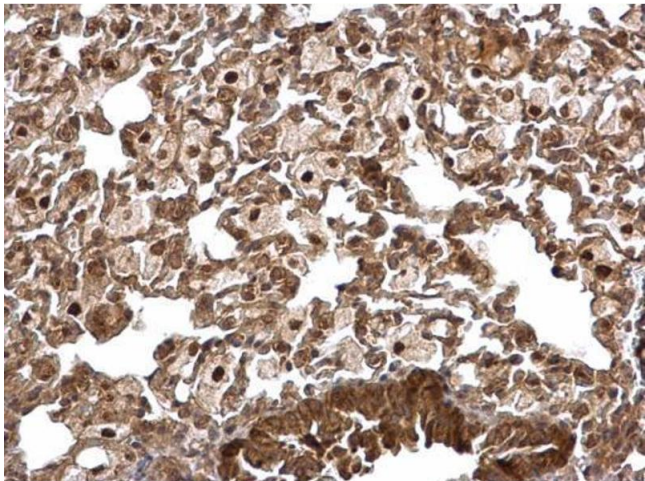
Handling

| | |
|--------------------|--|
| Format: | Liquid |
| Concentration: | 0.5 mg/mL |
| Buffer: | 0.1M Tris, 0.1M Glycine, 10 % Glycerol (pH 7). 0.01 % Thimerosal was added as a preservative. |
| Preservative: | Thimerosal (Merthiolate) |
| Precaution of Use: | This product contains Thimerosal (Merthiolate): a POISONOUS AND HAZARDOUS SUBSTANCE which should be handled by trained staff only. |

Handling

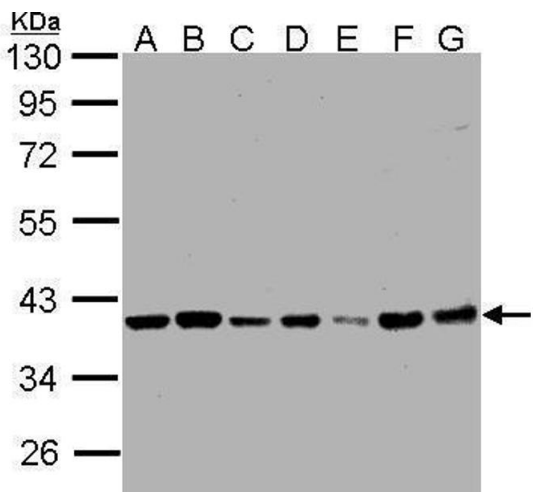
| | |
|------------------|--|
| Storage: | -20 °C |
| Storage Comment: | Keep as concentrated solution. Aliquot and store at -20°C or below. Avoid multiple freeze-thaw cycles. |

Images



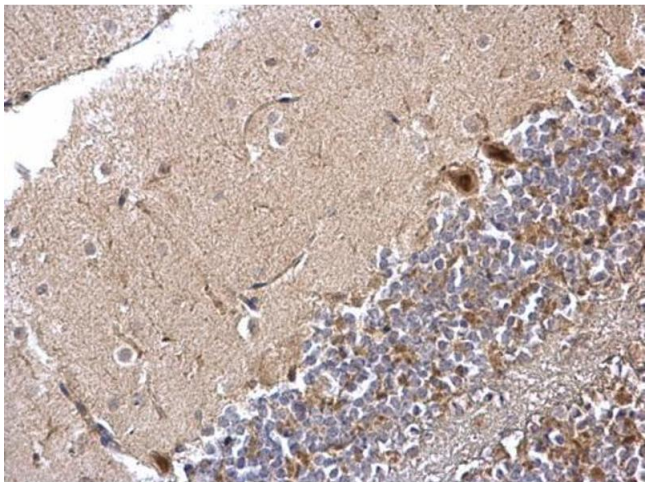
Immunohistochemistry

Image 1. IHC-P Image PPP1CB antibody detects PPP1CB protein at nucleus and cytosol on mouse lung by immunohistochemical analysis. Sample: Paraffin-embedded mouse lung. PPP1CB antibody , dilution: 1:500.



Western Blotting

Image 2. WB Image Sample (30µg whole cell lysate) A: 293T B: A431 , C: H1299 D: HeLa S3 , E: Hep G2 , F: MOLT4 , G: Raji , 7.5% SDS PAGE antibody diluted at 1:1000



Immunohistochemistry

Image 3. IHC-P Image PPP1CB antibody detects PPP1CB protein at nucleus and cytosol on mouse hind brain by immunohistochemical analysis. Sample: Paraffin-embedded mouse hind brain. PPP1CB antibody , dilution: 1:500.

Please check the [product details page](#) for more images. Overall 5 images are available for ABIN2856078.