

Datasheet for ABIN2856079  
**anti-Annexin VII antibody**



[Go to Product page](#)

3 Images

## Overview

Quantity:	100 µL
Target:	Annexin VII (ANXA7)
Reactivity:	Human
Host:	Rabbit
Clonality:	Polyclonal
Conjugate:	This Annexin VII antibody is un-conjugated
Application:	Western Blotting (WB), Immunofluorescence (IF), Immunohistochemistry (Paraffin-embedded Sections) (IHC (p)), Immunocytochemistry (ICC)

## Product Details

Immunogen:	Recombinant protein encompassing a sequence within the center region of human Annexin VII. The exact sequence is proprietary.
Isotype:	IgG
Cross-Reactivity:	Human
Characteristics:	Rabbit Polyclonal antibody to Annexin VII (annexin A7) Annexin VII antibody
Purification:	Purified by antigen-affinity chromatography.

## Target Details

Target:	Annexin VII (ANXA7)
Alternative Name:	annexin A7 ( <a href="#">ANXA7 Products</a> )

## Target Details

Background:	Annexin VII is a member of the annexin family of calcium-dependent phospholipid binding proteins. The Annexin VII gene contains 14 exons and spans approximately 34 kb of DNA. An alternatively spliced cassette exon results in two mRNA transcripts of 2.0 and 2.4 kb which are predicted to generate two protein isoforms differing in their N-terminal domain. The alternative splicing event is tissue specific and the mRNA containing the cassette exon is prevalent in brain, heart and skeletal muscle. The transcripts also differ in their 3'-non coding regions by the use of two alternative poly(A) signals. Annexin VII encodes a protein with a molecular weight of approximately 51 kDa with a unique, highly hydrophobic N-terminal domain of 167 amino acids and a conserved C-terminal region of 299 amino acids. The latter domain is composed of alternating hydrophobic and hydrophilic segments. Structural analysis of the protein suggests that Annexin VII is a membrane binding protein with diverse properties, including voltage-sensitive calcium channel activity, ion selectivity and membrane fusion.
-------------	---

Molecular Weight:	53 kDa
-------------------	--------

Gene ID:	310
----------	-----

UniProt:	<a href="#">P20073</a>
----------	------------------------

## Application Details

Application Notes:	WB: 1:500-1:3000. ICC/IF: 1:100-1:1000. IHC-P: 1:100-1:1000. Optimal dilutions/concentrations should be determined by the researcher. Not tested in other applications.
--------------------	---

Comment:	Positive Control: 293T , A431 , HeLa , HepG2
----------	--

Restrictions:	For Research Use only
---------------	-----------------------

## Handling

Format:	Liquid
---------	--------

Concentration:	0.28 mg/mL
----------------	------------

Buffer:	0.1M Tris-Glycine ( pH 7), 10 % Glycerol, 0.01 % Thimerosal
---------	---

Preservative:	Thimerosal (Merthiolate)
---------------	--------------------------

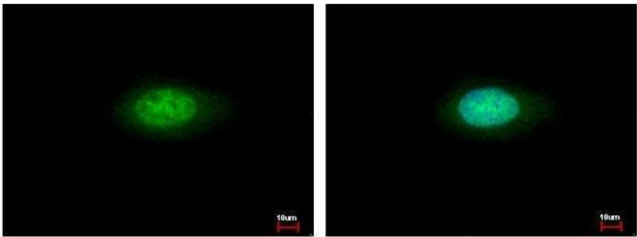
Precaution of Use:	This product contains Thimerosal (Merthiolate): a POISONOUS AND HAZARDOUS SUBSTANCE which should be handled by trained staff only.
--------------------	--

Storage:	4 °C, -20 °C
----------	--------------

Handling

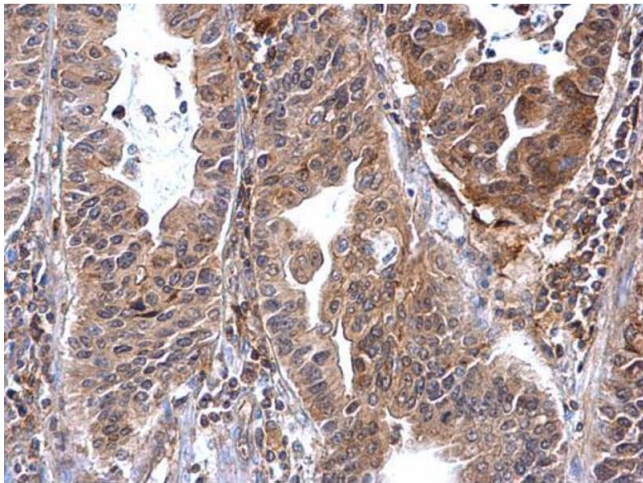
Storage Comment: Store as concentrated solution. Centrifuge briefly prior to opening vial. For short-term storage (1-2 weeks), store at 4°C. For long-term storage, aliquot and store at -20°C or below. Avoid multiple freeze-thaw cycles.

Images



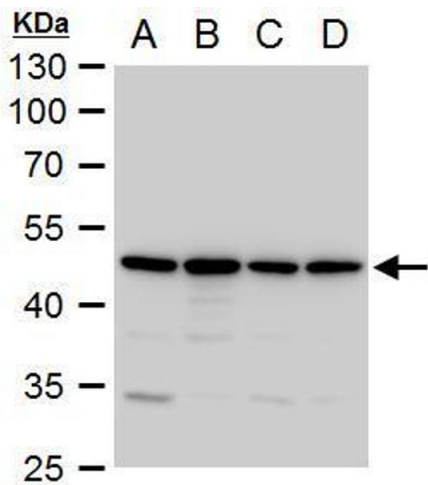
Immunofluorescence

**Image 1.** ICC/IF Image Annexin VII antibody detects ANXA7 protein at cytoplasm and nucleus by immunofluorescent analysis. Sample: HeLa cells were fixed in ice-cold MeOH for 5 min. Green: ANXA7 protein stained by Annexin VII antibody , diluted at 1:500. Blue: Hoechst 33343 staining.



Immunohistochemistry

**Image 2.** IHC-P Image Annexin VII antibody detects Annexin VII protein at cytosol on human gastric carcinoma by immunohistochemical analysis. Sample: Paraffin-embedded human gastric carcinoma. Annexin VII antibody , dilution: 1:500.



Western Blotting

**Image 3.** WB Image Annexin VII antibody detects Annexin VII protein by western blot analysis. A. 30 µg 293T whole cell extract B. 30 µg A431 whole cell extract C. 30 µg HeLa whole cell extract D. 30 µg HepG2 whole cell extract 10 % SDS-PAGE Annexin VII antibody , dilution: 1:1000