

Datasheet for ABIN2856083

anti-SKAP1 antibody**2** Images[Go to Product page](#)

Overview

Quantity:	100 µL
Target:	SKAP1
Reactivity:	Human
Host:	Rabbit
Clonality:	Polyclonal
Conjugate:	This SKAP1 antibody is un-conjugated
Application:	Western Blotting (WB), Immunohistochemistry (Paraffin-embedded Sections) (IHC (p))

Product Details

Immunogen:	Recombinant protein encompassing a sequence within the center region of human SKAP55. The exact sequence is proprietary.
Isotype:	IgG
Cross-Reactivity:	Human
Characteristics:	Rabbit Polyclonal antibody to SKAP55 (src kinase associated phosphoprotein 1) SKAP55 antibody
Purification:	Purified by antigen-affinity chromatography.

Target Details

Target:	SKAP1
Alternative Name:	src kinase associated phosphoprotein 1 (SKAP1 Products)

Target Details

Background: This gene encodes a T cell adaptor protein, a class of intracellular molecules with modular domains capable of recruiting additional proteins but that exhibit no intrinsic enzymatic activity. The encoded protein contains a unique N-terminal region followed by a PH domain and C-terminal SH3 domain. Along with the adhesion and degranulation-promoting adaptor protein, the encoded protein plays a critical role in inside-out signaling by coupling T-cell antigen receptor stimulation to the activation of integrins.

Cellular Localization: Cytoplasm , Nucleus , Cell membrane

Molecular Weight: 41 kDa

Gene ID: 8631

UniProt: [Q86WV1](#)

Application Details

Application Notes: WB: 1:500-1:3000. IHC-P: 1:100-1:1000. Optimal dilutions/concentrations should be determined by the researcher. Not tested in other applications.

Comment: Positive Control: NT2D1

Restrictions: For Research Use only

Handling

Format: Liquid

Concentration: 1 mg/mL

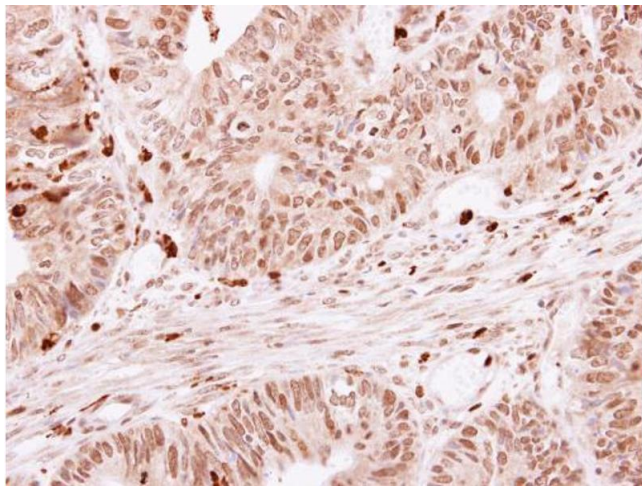
Buffer: 0.1M Tris-Glycine (pH 7), 10 % Glycerol, 0.01 % Thimerosal

Preservative: Thimerosal (Merthiolate)

Precaution of Use: This product contains Thimerosal (Merthiolate): a POISONOUS AND HAZARDOUS SUBSTANCE which should be handled by trained staff only.

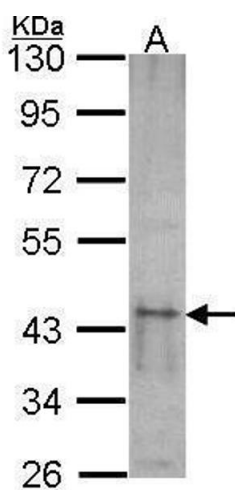
Storage: 4 °C,-20 °C

Storage Comment: Store as concentrated solution. Centrifuge briefly prior to opening vial. For short-term storage (1-2 weeks), store at 4°C. For long-term storage, aliquot and store at -20°C or below. Avoid multiple freeze-thaw cycles.



Immunohistochemistry

Image 1. IHC-P Image SKAP55 antibody detects SKAP1 protein at cytoplasm on human colon carcinoma by immunohistochemical analysis. Sample: Paraffin-embedded colon carcinoma. SKAP55 antibody , dilution: 1:500.



Western Blotting

Image 2. WB Image Sample (30 ug of whole cell lysate) A: NT2D1 10% SDS PAGE SKAP55 antibody antibody diluted at 1:1000