

Datasheet for ABIN2856087
anti-PSMC5 antibody (Center)

5 Images

[Go to Product page](#)

Overview

Quantity:	100 µL
Target:	PSMC5
Binding Specificity:	Center
Reactivity:	Human, Mouse, Rat
Host:	Rabbit
Clonality:	Polyclonal
Conjugate:	This PSMC5 antibody is un-conjugated
Application:	Western Blotting (WB), Immunofluorescence (IF), Immunohistochemistry (Paraffin-embedded Sections) (IHC (p)), Immunocytochemistry (ICC)

Product Details

Immunogen:	Recombinant protein encompassing a sequence within the center region of human PSMC5. The exact sequence is proprietary.
Isotype:	IgG
Cross-Reactivity:	Zebrafish (Danio rerio), Xenopus laevis, Xenopus tropicalis, Rhesus Monkey, Chimpanzee, Cow (Bovine)
Cross-Reactivity (Details):	Zebrafish (100 %), Xenopus laevis (100 %), Xenopus Tropicalis (100 %), Rhesus Monkey (100 %), Chimpanzee (100 %), Bovine (100 %)
Characteristics:	Rabbit Polyclonal antibody to PSMC5 (proteasome (prosome, macropain) 26S subunit, ATPase, 5) PSMC5 antibody

Product Details

Purification: Purified by antigen-affinity chromatography.

Target Details

Target: PSMC5

Alternative Name: PSMC5 ([PSMC5 Products](#))

Background: The 26S proteasome is a multicatalytic proteinase complex with a highly ordered structure composed of 2 complexes, a 20S core and a 19S regulator. The 20S core is composed of 4 rings of 28 non-identical subunits, 2 rings are composed of 7 alpha subunits and 2 rings are composed of 7 beta subunits. The 19S regulator is composed of a base, which contains 6 ATPase subunits and 2 non-ATPase subunits, and a lid, which contains up to 10 non-ATPase subunits. Proteasomes are distributed throughout eukaryotic cells at a high concentration and cleave peptides in an ATP/ubiquitin-dependent process in a non-lysosomal pathway. An essential function of a modified proteasome, the immunoproteasome, is the processing of class I MHC peptides. This gene encodes one of the ATPase subunits, a member of the triple-A family of ATPases which have a chaperone-like activity. In addition to participation in proteasome functions, this subunit may participate in transcriptional regulation since it has been shown to interact with the thyroid hormone receptor and retinoid X receptor-alpha.

Cellular Localization: Cytoplasm (Potential) , Nucleus

Molecular Weight: 46 kDa

Gene ID: 5705

Pathways: [Mitotic G1-G1/S Phases](#), [DNA Replication](#), [Synthesis of DNA](#), [Ubiquitin Proteasome Pathway](#)

Application Details

Application Notes: Suggested dilution Reference ICC/IF 1:100-1:1000* IHC (Formalin-fixed paraffin-embedded sections) 1:100-1:1000* Western blot 1:500-1:3000* Not tested in other applications. *Optimal dilutions/concentrations should be determined by the researcher. Suggested dilution Reference ICC/IF 1:100-1:1000* IHC (Formalin-fixed paraffin-embedded sections) 1:100-1:1000* Western blot 1:500-1:3000*

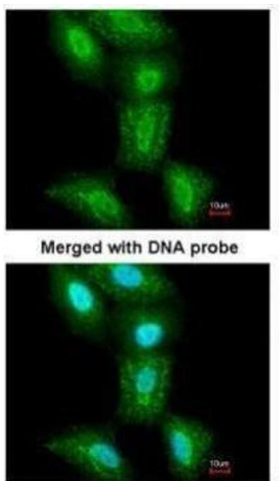
Comment: Positive Control: A431 , HepG2 , Neuro2A , GL261 , C8D30 , PC-12

Restrictions: For Research Use only

Handling

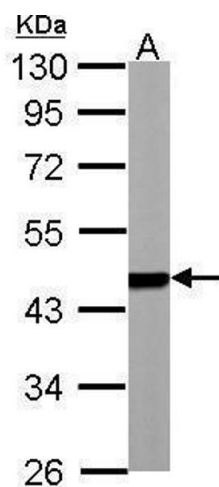
Format:	Liquid
Concentration:	1 mg/mL
Buffer:	0.1M Tris, 0.1M Glycine, 10 % Glycerol (pH 7). 0.01 % Thimerosal was added as a preservative.
Preservative:	Thimerosal (Merthiolate)
Precaution of Use:	This product contains Thimerosal (Merthiolate): a POISONOUS AND HAZARDOUS SUBSTANCE which should be handled by trained staff only.
Storage:	-20 °C
Storage Comment:	Keep as concentrated solution. Aliquot and store at -20°C or below. Avoid multiple freeze-thaw cycles.

Images



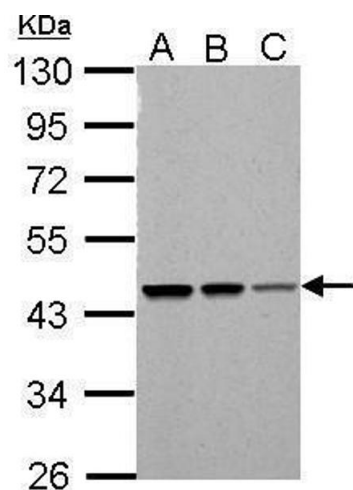
Immunofluorescence

Image 1. ICC/IF Image Immunofluorescence analysis of paraformaldehyde-fixed A549, using PSMC5, antibody at 1:200 dilution.



Western Blotting

Image 2. WB Image PSMC5 antibody detects PSMC5 protein by Western blot analysis. A. 30 µg PC-12 whole cell lysate/extract 10 % SDS-PAGE PSMC5 antibody , dilution: 1:1000



Western Blotting

Image 3. WB Image PSMC5 antibody detects PSMC5 protein by Western blot analysis. A. 30 µg Neuro2A whole cell lysate/extract B. 30 µg GL261 whole cell lysate/extract C. 30 µg C8D30 whole cell lysate/extract 10 % SDS-PAGE PSMC5 antibody , dilution: 1:1000

Please check the [product details page](#) for more images. Overall 5 images are available for ABIN2856087.