

Datasheet for ABIN2856088

anti-KRT6A antibody**3** Images[Go to Product page](#)

Overview

Quantity:	100 µL
Target:	KRT6A
Reactivity:	Human
Host:	Rabbit
Clonality:	Polyclonal
Conjugate:	This KRT6A antibody is un-conjugated
Application:	Western Blotting (WB), Immunohistochemistry (Paraffin-embedded Sections) (IHC (p))

Product Details

Immunogen:	Recombinant protein encompassing a sequence within the center region of human Cytokeratin 6. The exact sequence is proprietary.
Isotype:	IgG
Cross-Reactivity:	Human, Mouse
Characteristics:	Rabbit polyclonal antibody to keratin 6A (keratin 6A) Cytokeratin 6 antibody
Purification:	Purified by antigen-affinity chromatography.

Target Details

Target:	KRT6A
Alternative Name:	keratin 6A (KRT6A Products)

Target Details

Background:	The protein encoded by this gene is a member of the keratin gene family. The type II cytokeratins consist of basic or neutral proteins which are arranged in pairs of heterotypic keratin chains coexpressed during differentiation of simple and stratified epithelial tissues. As many as six of this type II cytokeratin (KRT6) have been identified, the multiplicity of the genes is attributed to successive gene duplication events. The genes are expressed with family members KRT16 and/or KRT17 in the filiform papillae of the tongue, the stratified epithelial lining of oral mucosa and esophagus, the outer root sheath of hair follicles, and the glandular epithelia. This KRT6 gene in particular encodes the most abundant isoform. Mutations in these genes have been associated with pachyonychia congenita. The type II cytokeratins are clustered in a region of chromosome 12q12-q13.
-------------	--

Molecular Weight:	60 kDa
-------------------	--------

Gene ID:	3853
----------	------

Application Details

Application Notes:	WB: 1:500-1:3000. IHC-P: 1:100-1:1000. Optimal dilutions/concentrations should be determined by the researcher. Not tested in other applications.
--------------------	---

Comment:	Positive Control: A431
----------	------------------------

Restrictions:	For Research Use only
---------------	-----------------------

Handling

Format:	Liquid
---------	--------

Concentration:	0.34 mg/mL
----------------	------------

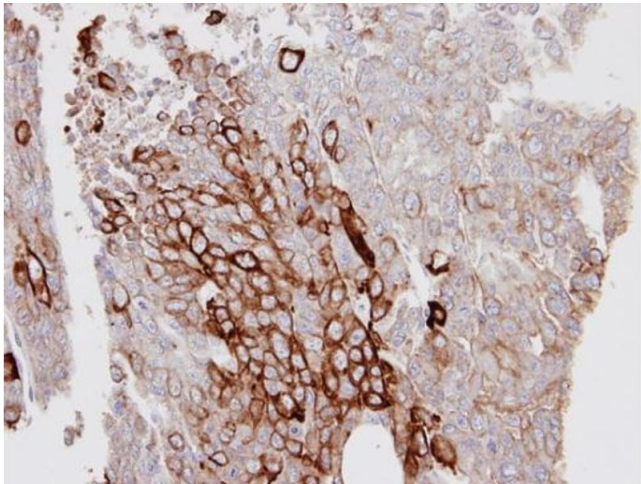
Buffer:	0.1M Tris-Glycine (pH 7), 10 % Glycerol, 0.01 % Thimerosal
---------	---

Preservative:	Thimerosal (Merthiolate)
---------------	--------------------------

Precaution of Use:	This product contains Thimerosal (Merthiolate): a POISONOUS AND HAZARDOUS SUBSTANCE which should be handled by trained staff only.
--------------------	--

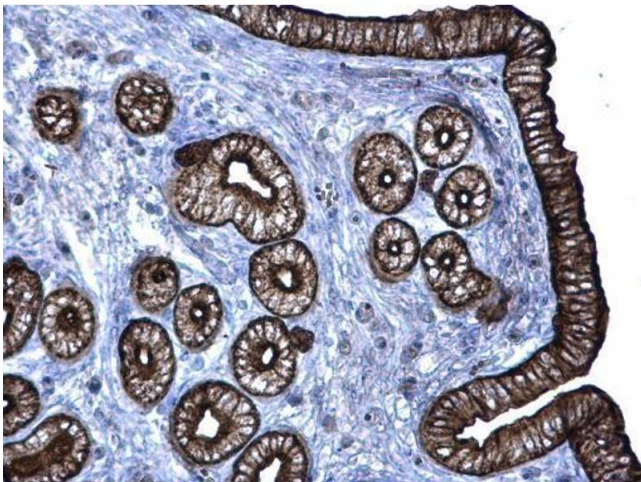
Storage:	4 °C,-20 °C
----------	-------------

Storage Comment:	Store as concentrated solution. Centrifuge briefly prior to opening vial. For short-term storage (1-2 weeks), store at 4°C. For long-term storage, aliquot and store at -20°C or below. Avoid multiple freeze-thaw cycles.
------------------	--



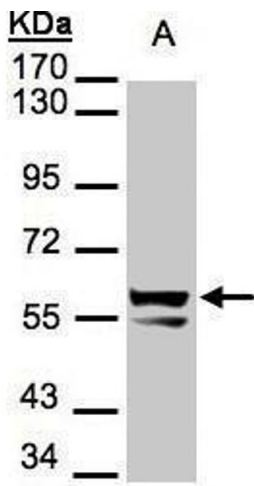
Immunohistochemistry

Image 1. IHC-P Image Immunohistochemical analysis of paraffin-embedded D54MG xenograft, using KRT6A, antibody at 1:100 dilution.



Immunohistochemistry

Image 2. IHC-P Image Cytokeratin 6 antibody detects Cytokeratin 6 protein at membrane on mouse cervix by immunohistochemical analysis. Sample: Paraffin-embedded mouse cervix. Cytokeratin 6 antibody, diluted at 1:500.



Western Blotting

Image 3. WB Image Sample(30 µg of whole cell lysate) A:A431, 7.5% SDS PAGE antibody diluted at 1:1000