

Datasheet for ABIN2856090
anti-ERCC2 antibody (Internal Region)[Go to Product page](#)

4 Images

Overview

Quantity:	100 µL
Target:	ERCC2
Binding Specificity:	Internal Region
Reactivity:	Human, Mouse
Host:	Rabbit
Clonality:	Polyclonal
Conjugate:	This ERCC2 antibody is un-conjugated
Application:	Western Blotting (WB), Immunofluorescence (IF), Immunocytochemistry (ICC), Immunohistochemistry (Paraffin-embedded Sections) (IHC (p))

Product Details

Immunogen:	Recombinant protein encompassing a sequence within the center region of human ERCC2. The exact sequence is proprietary.
Isotype:	IgG
Cross-Reactivity:	Chimpanzee
Cross-Reactivity (Details):	Chimpanzee (100 %)
Characteristics:	Rabbit Polyclonal antibody to ERCC2 (excision repair cross-complementing rodent repair deficiency, complementation group 2) ERCC2 antibody [N2C2], Internal
Purification:	Purified by antigen-affinity chromatography.

Target Details

Target:	ERCC2
Alternative Name:	ERCC2 (ERCC2 Products)
Background:	<p>The nucleotide excision repair pathway is a mechanism to repair damage to DNA. The protein encoded by this gene is involved in transcription-coupled nucleotide excision repair and is an integral member of the basal transcription factor BTF2/TFIIH complex. The gene product has ATP-dependent DNA helicase activity and belongs to the RAD3/XPD subfamily of helicases. Defects in this gene can result in three different disorders, the cancer-prone syndrome xeroderma pigmentosum complementation group D, trichothiodystrophy, and Cockayne syndrome. Alternatively spliced transcript variants encoding different isoforms have been found for this gene.</p> <p>Cellular Localization: Nucleus</p>
Molecular Weight:	87 kDa
Gene ID:	2068
Pathways:	DNA Damage Repair

Application Details

Application Notes:	<p>Suggested dilution Reference ICC/IF 1:100-1:1000* IHC (Formalin-fixed paraffin-embedded sections) 1:100-1:1000* Western blot 1:500-1:3000* Not tested in other applications. *Optimal dilutions/concentrations should be determined by the researcher.Suggested dilutionReferenceICC/IF1:100-1:1000* IHC (Formalin-fixed paraffin-embedded sections)1:100-1:1000* Western blot1:500-1:3000*</p>
Comment:	Positive Control: IMR32 , U87-MG
Restrictions:	For Research Use only

Handling

Format:	Liquid
Concentration:	1 mg/mL
Buffer:	1XPBS, 1 % BSA, 20 % Glycerol (pH 7). 0.01 % Thimerosal was added as a preservative.
Preservative:	Thimerosal (Merthiolate)
Precaution of Use:	This product contains Thimerosal (Merthiolate): a POISONOUS AND HAZARDOUS SUBSTANCE

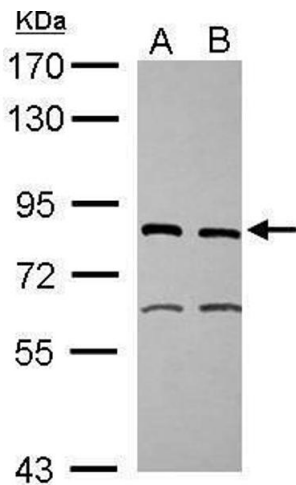
Handling

which should be handled by trained staff only.

Storage: -20 °C

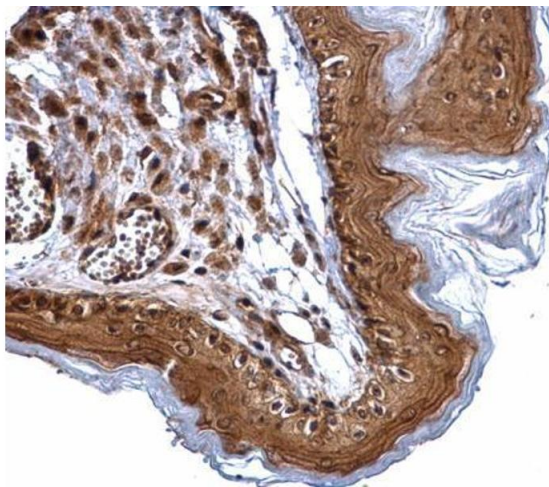
Storage Comment: Keep as concentrated solution. Aliquot and store at -20°C or below. Avoid multiple freeze-thaw cycles.

Images



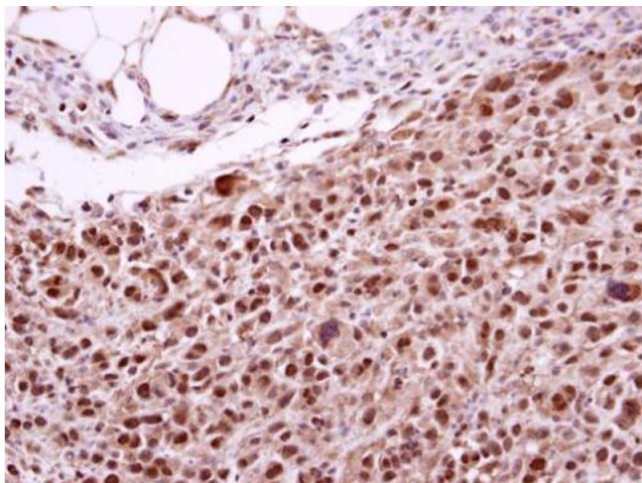
Western Blotting

Image 1. WB Image Sample (30 ug of whole cell lysate) A: IMR32 B: U87-MG 7.5% SDS PAGE antibody diluted at 1:1000



Immunohistochemistry

Image 2. IHC-P Image ERCC2 antibody [N2C2], Internal detects ERCC2 protein at cytosol and nucleus on mouse esophagus by immunohistochemical analysis. Sample: Paraffin-embedded mouse esophagus. ERCC2 antibody [N2C2], Internal , dilution: 1:500.



Immunohistochemistry

Image 3. IHC-P Image Immunohistochemical analysis of paraffin-embedded ES2 xenograft, using ERCC2, antibody at 1:500 dilution.

Please check the [product details page](#) for more images. Overall 4 images are available for ABIN2856090.