

Datasheet for ABIN2856091
anti-SUGT1 antibody (Center)

2 Images

[Go to Product page](#)

Overview

Quantity:	100 µL
Target:	SUGT1
Binding Specificity:	Center
Reactivity:	Human
Host:	Rabbit
Clonality:	Polyclonal
Conjugate:	This SUGT1 antibody is un-conjugated
Application:	Western Blotting (WB), Immunofluorescence (IF), Immunocytochemistry (ICC)

Product Details

Immunogen:	Recombinant protein encompassing a sequence within the center region of human SUGT1. The exact sequence is proprietary.
Isotype:	IgG
Cross-Reactivity:	Mouse (Murine), Rat (Rattus), Cow (Bovine)
Cross-Reactivity (Details):	Mouse (86 %), Rat (86 %), Bovine (90 %)
Characteristics:	Rabbit polyclonal antibody to SUGT1 (SGT1, suppressor of G2 allele of SKP1 (S. cerevisiae)) SUGT1 antibody [N1C3]
Purification:	Purified by antigen-affinity chromatography.

Target Details

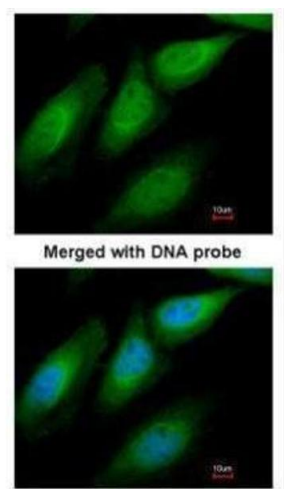
Target:	SUGT1
Alternative Name:	SUGT1 (SUGT1 Products)
Background:	This gene is homologous to the yeast gene SGT1, which encodes a protein involved in kinetochore function and required for the G1/S and G2/M transitions. Complementation studies suggest that the human protein has similar functions. Two transcript variants encoding different isoforms have been found for this gene.
Molecular Weight:	41 kDa
Gene ID:	10910

Application Details

Application Notes:	Suggested dilution Reference ICC/IF 1:100-1:1000* Western blot 1:500-1:3000* Not tested in other applications. *Optimal dilutions/concentrations should be determined by the researcher.Suggested dilutionReferenceICC/IF1:100-1:1000* Western blot1:500-1:3000*
Comment:	Positive Control: 293T , A431 , HeLa
Restrictions:	For Research Use only

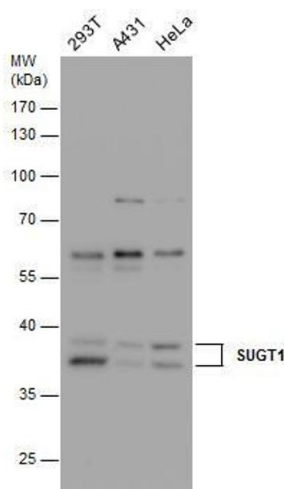
Handling

Format:	Liquid
Concentration:	1 mg/mL
Buffer:	0.1M Tris, 0.1M Glycine, 10 % Glycerol (pH 7). 0.01 % Thimerosal was added as a preservative.
Preservative:	Thimerosal (Merthiolate)
Precaution of Use:	This product contains Thimerosal (Merthiolate): a POISONOUS AND HAZARDOUS SUBSTANCE which should be handled by trained staff only.
Storage:	-20 °C
Storage Comment:	Keep as concentrated solution. Aliquot and store at -20°C or below. Avoid multiple freeze-thaw cycles.



Immunofluorescence

Image 1. ICC/IF Image Immunofluorescence analysis of paraformaldehyde-fixed HeLa, using SUGT1, antibody at 1:200 dilution.



Western Blotting

Image 2. WB Image SUGT1 antibody detects SUGT1 protein by western blot analysis. Various whole cell extracts (30 µg) were separated by 10% SDS-PAGE, and the membrane was blotted with SUGT1 antibody, diluted by 1:3000.