

Datasheet for ABIN2856093

anti-BRE antibody

4 Images



[Go to Product page](#)

Overview

Quantity:	100 µL
Target:	BRE
Reactivity:	Human
Host:	Rabbit
Clonality:	Polyclonal
Conjugate:	This BRE antibody is un-conjugated
Application:	Western Blotting (WB), Immunofluorescence (IF), Immunocytochemistry (ICC), Immunoprecipitation (IP)

Product Details

Immunogen:	Recombinant protein encompassing a sequence within the center region of human BRCC45. The exact sequence is proprietary.
Isotype:	IgG
Cross-Reactivity:	Human, Mouse, Rat
Characteristics:	Rabbit Polyclonal antibody to BRCC45 (brain and reproductive organ-expressed (TNFRSF1A modulator)) BRCC45 antibody
Purification:	Purified by antigen-affinity chromatography.
Grade:	KO Validated

Target Details

Target:	BRE
Alternative Name:	BRISC and BRCA1 A complex member 2 (BRE Products)
Background:	<p>Component of the BRCA1-A complex, a complex that specifically recognizes 'Lys-63'-linked ubiquitinated histones H2A and H2AX at DNA lesions sites, leading to target the BRCA1-BARD1 heterodimer to sites of DNA damage at double-strand breaks (DSBs). The BRCA1-A complex also possesses deubiquitinase activity that specifically removes 'Lys-63'-linked ubiquitin on histones H2A and H2AX. In the BRCA1-A complex, it acts as an adapter that bridges the interaction between MERIT40/NBA1 and the rest of the complex, thereby being required for the complex integrity and modulating the E3 ubiquitin ligase activity of the BRCA1-BARD1 heterodimer. Probably also plays a role as a component of the BRISC complex, a multiprotein complex that specifically cleaves 'Lys-63'-linked ubiquitin. May play a role in homeostasis or cellular differentiation in cells of neural, epithelial and germline origins. May also act as a death receptor-associated anti-apoptotic protein, which inhibits the mitochondrial apoptotic pathway. May regulate TNF-alpha signaling through its interactions with TNFRSF1A, however these effects may be indirect.</p> <p>Cellular Localization: Cytoplasm , Nucleus</p>
Molecular Weight:	44 kDa
Gene ID:	9577
UniProt:	Q9NXR7
Pathways:	Positive Regulation of Response to DNA Damage Stimulus

Application Details

Application Notes:	WB: 1:500-1:3000. ICC/IF: 1:100-1:1000. IP: 1:100-1:500. Optimal dilutions/concentrations should be determined by the researcher. Not tested in other applications.
Comment:	Positive Control: 293T , A431 , C8D30 , rat testis , HeLa Validation: KO/KD
Restrictions:	For Research Use only

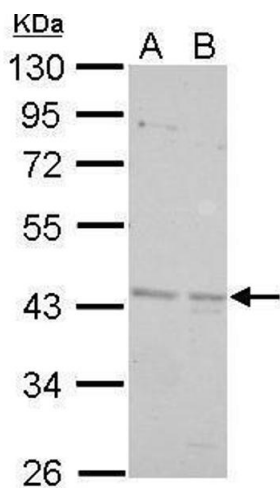
Handling

Format:	Liquid
Concentration:	1 mg/mL

Handling

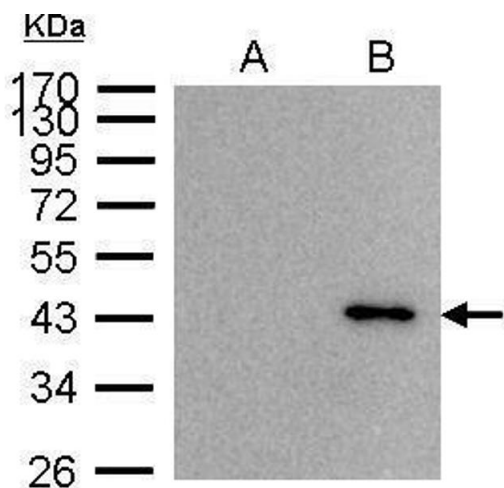
Buffer:	0.1M Tris-Glycine (pH 7), 10 % Glycerol, 0.01 % Thimerosal
Preservative:	Thimerosal (Merthiolate)
Precaution of Use:	This product contains Thimerosal (Merthiolate): a POISONOUS AND HAZARDOUS SUBSTANCE which should be handled by trained staff only.
Storage:	4 °C,-20 °C
Storage Comment:	Store as concentrated solution. Centrifuge briefly prior to opening vial. For short-term storage (1-2 weeks), store at 4°C. For long-term storage, aliquot and store at -20°C or below. Avoid multiple freeze-thaw cycles.

Images



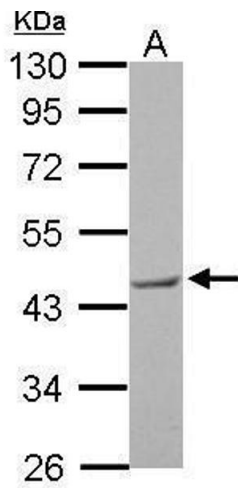
Western Blotting

Image 1. WB Image BRCC45 antibody detects BRE protein by Western blot analysis. A. 30 µg 293T whole cell lysate/extract B. 30 µg A431 whole cell lysate/extract 10 % SDS-PAGE BRCC45 antibody , dilution: 1:1000



Immunoprecipitation

Image 2. IP Image BRE antibody immunoprecipitates BRE protein in IP experiments. IP Sample: 1000 µg 293T whole cell lysate/extract A. Control with 2.5 µg of preimmune rabbit IgG B. Immunoprecipitation of BRE protein by 2.5 µg of BRE antibody , 10% SDS-PAGE The immunoprecipitated BRE protein was detected by BRE antibody , diluted at 1:1000. EasyBlot anti-rabbit IgG was used as a secondary reagent.



Western Blotting

Image 3. WB Image BRCC45 antibody detects BRE protein by Western blot analysis. A. 30 ug C8D30 whole cell lysate/extract 10 % SDS-PAGE BRCC45 antibody , dilution: 1:1000

Please check the [product details page](#) for more images. Overall 4 images are available for ABIN2856093.