



[Go to Product page](#)

Datasheet for ABIN2856097

anti-PPM1K antibody

2 Images

Overview

Quantity:	100 µL
Target:	PPM1K
Reactivity:	Human
Host:	Rabbit
Clonality:	Polyclonal
Conjugate:	This PPM1K antibody is un-conjugated
Application:	Western Blotting (WB), Immunohistochemistry (Paraffin-embedded Sections) (IHC (p))

Product Details

Immunogen:	Recombinant protein encompassing a sequence within the center region of human PPM1K. The exact sequence is proprietary.
Isotype:	IgG
Cross-Reactivity:	Human
Characteristics:	Rabbit polyclonal antibody to PPM1K (protein phosphatase 1K (PP2C domain containing)) PPM1K antibody [N1C3]
Purification:	Purified by antigen-affinity chromatography.

Target Details

Target:	PPM1K
Alternative Name:	protein phosphatase, Mg ²⁺ /Mn ²⁺ dependent 1K (PPM1K Products)

Target Details

Background: Regulates the mitochondrial permeability transition pore and is essential for cellular survival and development.

Cellular Localization: Mitochondrion matrix

Molecular Weight: 41 kDa

Gene ID: 152926

UniProt: [Q8N3J5](#)

Application Details

Application Notes: WB: 1:500-1:3000. IHC-P: 1:100-1:1000. Optimal dilutions/concentrations should be determined by the researcher. Not tested in other applications.

Comment: Positive Control: PPM1K transfected 293T cell

Restrictions: For Research Use only

Handling

Format: Liquid

Concentration: 1 mg/mL

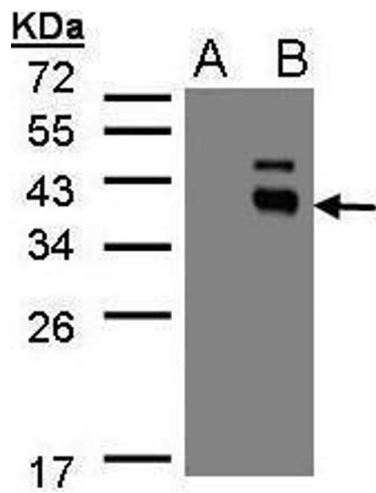
Buffer: 0.1M Tris-Glycine (pH 7), 10 % Glycerol, 0.01 % Thimerosal

Preservative: Thimerosal (Merthiolate)

Precaution of Use: This product contains Thimerosal (Merthiolate): a POISONOUS AND HAZARDOUS SUBSTANCE which should be handled by trained staff only.

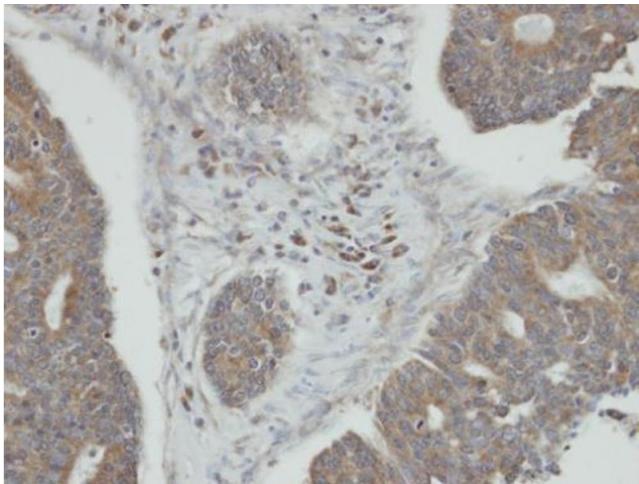
Storage: 4 °C, -20 °C

Storage Comment: Store as concentrated solution. Centrifuge briefly prior to opening vial. For short-term storage (1-2 weeks), store at 4°C. For long-term storage, aliquot and store at -20°C or below. Avoid multiple freeze-thaw cycles.



Western Blotting

Image 1. WB Image Western Blot analysis of PPM1K expression in transfected 293T cell line by PPM1K polyclonal antibody. A: Non-transfected lysate. B: PPM1K transfected lysate. 12% SDS PAGE antibody diluted at 1:500



Immunohistochemistry

Image 2. IHC-P Image Immunohistochemical analysis of paraffin-embedded human endometrial ovarian cancer, using PPM1K, antibody at 1:100 dilution.