

Datasheet for ABIN2856098  
**anti-Complement C2 antibody**[Go to Product page](#)

## 2 Images

## Overview

Quantity:	100 µL
Target:	Complement C2
Reactivity:	Human
Host:	Rabbit
Clonality:	Polyclonal
Conjugate:	This Complement C2 antibody is un-conjugated
Application:	Western Blotting (WB), Immunocytochemistry (ICC), Immunofluorescence (IF)

## Product Details

Immunogen:	Recombinant protein encompassing a sequence within the center region of human Complement C2. The exact sequence is proprietary.
Isotype:	IgG
Cross-Reactivity:	Human
Characteristics:	Rabbit Polyclonal antibody to Complement C2 (complement component 2) Complement C2 antibody [N3C3]
Purification:	Purified by antigen-affinity chromatography.

## Target Details

Target:	Complement C2
Abstract:	<a href="#">Complement C2 Products</a>

## Target Details

**Background:** Component C2 is a serum glycoprotein that functions as part of the classical pathway of the complement system. Activated C1 cleaves C2 into C2a and C2b. The serine proteinase C2a then combines with complement factor 4b to create the C3 or C5 convertase. Deficiency of C2 has been reported to associated with certain autoimmune diseases and SNPs in this gene have been associated with altered susceptibility to age-related macular degeneration. This gene localizes within the class III region of the MHC on the short arm of chromosome 6. Alternative splicing results in multiple transcript variants encoding distinct isoforms. Additional transcript variants have been described in publications but their full-length sequence has not been determined.

Cellular Localization: Secreted

**Molecular Weight:** 83 kDa

**Gene ID:** 717

**UniProt:** [P06681](#)

## Application Details

**Application Notes:** WB: 1:500-1:3000. ICC/IF: 1:100-1:1000. Optimal dilutions/concentrations should be determined by the researcher. Not tested in other applications.

**Comment:** Positive Control: 293T , A431 , H1299 , HeLaS3 , HepG2 , Molt-4 , Raji

**Restrictions:** For Research Use only

## Handling

**Format:** Liquid

**Concentration:** 1 mg/mL

**Buffer:** 0.1M Tris-Glycine ( pH 7), 10 % Glycerol, 0.01 % Thimerosal

**Preservative:** Thimerosal (Merthiolate)

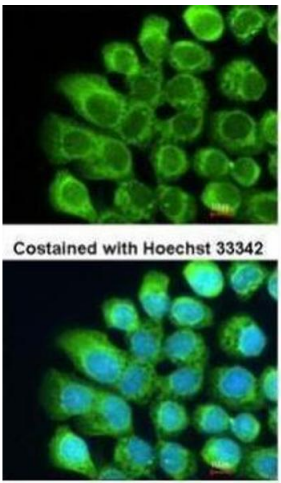
**Precaution of Use:** This product contains Thimerosal (Merthiolate): a POISONOUS AND HAZARDOUS SUBSTANCE which should be handled by trained staff only.

**Storage:** 4 °C,-20 °C

**Storage Comment:** Store as concentrated solution. Centrifuge briefly prior to opening vial. For short-term storage (1-2 weeks), store at 4°C. For long-term storage, aliquot and store at -20°C or below. Avoid

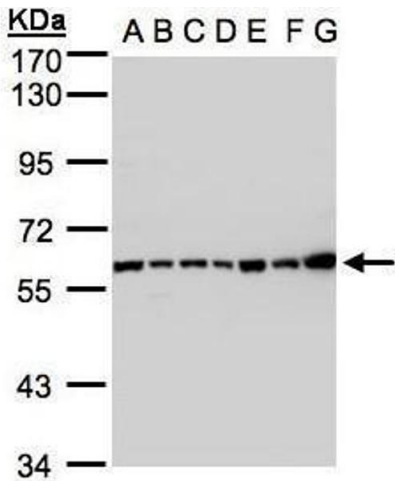
multiple freeze-thaw cycles.

Images



Immunofluorescence

**Image 1.** ICC/IF Image Immunofluorescence analysis of methanol-fixed A431, using Complement C2, antibody at 1:200 dilution.



Western Blotting

**Image 2.** WB Image Sample(30 ug whole cell lysate) A: 293T B: A431 , C: H1299 D: HeLa S3 , E: Hep G2 , F: MOLT4 , G: Raji , 7.5% SDS PAGE antibody diluted at 1:1000