

Datasheet for ABIN2856101  
**anti-PPP1R16A antibody (Center)**

## 2 Images

[Go to Product page](#)

## Overview

Quantity:	100 µL
Target:	PPP1R16A
Binding Specificity:	Center
Reactivity:	Human, Mouse
Host:	Rabbit
Clonality:	Polyclonal
Conjugate:	This PPP1R16A antibody is un-conjugated
Application:	Western Blotting (WB)

## Product Details

Immunogen:	Recombinant protein encompassing a sequence within the center region of human PPP1R16A. The exact sequence is proprietary.
Isotype:	IgG
Cross-Reactivity:	Mouse (Murine), Rat (Rattus)
Cross-Reactivity (Details):	mouse (84 %), Rat (85 %)
Characteristics:	Rabbit Polyclonal antibody to PPP1R16A (protein phosphatase 1, regulatory (inhibitor) subunit 16A) PPP1R16A antibody [N1C3]
Purification:	Purified by antigen-affinity chromatography.

## Target Details

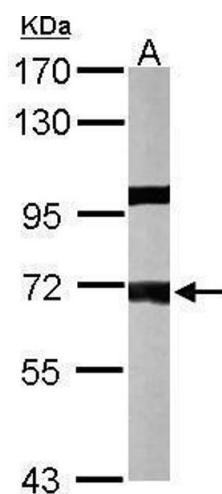
Target:	PPP1R16A
Alternative Name:	PPP1R16A ( <a href="#">PPP1R16A Products</a> )
Background:	Inhibits protein phosphatase 1 activity toward phosphorylase, myosin light chain and myosin substrates.  Cellular Localization: Cell membrane, Lipid-anchor
Molecular Weight:	58 kDa
Gene ID:	84988

## Application Details

Application Notes:	Suggested dilution Reference Western blot 1:500-1:3000* Not tested in other applications. *Optimal dilutions/concentrations should be determined by the researcher.Suggested dilutionReferenceWestern blot1:500-1:3000*
Comment:	Positive Control: 293T , A431 , H1299 , HeLaS3 , HepG2 , Molt-4 , Raji , mouse liver
Restrictions:	For Research Use only

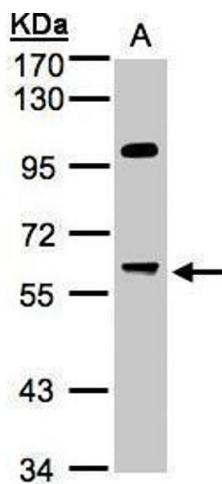
## Handling

Format:	Liquid
Concentration:	0.86 mg/mL
Buffer:	0.1M Tris, 0.1M Glycine, 10 % Glycerol ( pH 7). 0.01 % Thimerosal was added as a preservative.
Preservative:	Thimerosal (Merthiolate)
Precaution of Use:	This product contains Thimerosal (Merthiolate): a POISONOUS AND HAZARDOUS SUBSTANCE which should be handled by trained staff only.
Storage:	-20 °C
Storage Comment:	Keep as concentrated solution. Aliquot and store at -20°C or below. Avoid multiple freeze-thaw cycles.



Western Blotting

**Image 1.** WB Image Sample (50 ug of whole cell lysate) A: mouse liver 7.5% SDS PAGE antibody diluted at 1:1000



Western Blotting

**Image 2.** WB Image Sample(30 ug whole cell lysate) A:Hep G2 , 7.5% SDS PAGE antibody diluted at 1:1000