



[Go to Product page](#)

Datasheet for ABIN2856112

## anti-GSPT1 antibody

### 3 Images

#### Overview

Quantity:	100 µL
Target:	GSPT1
Reactivity:	Human
Host:	Rabbit
Clonality:	Polyclonal
Conjugate:	This GSPT1 antibody is un-conjugated
Application:	Western Blotting (WB), Immunohistochemistry (Paraffin-embedded Sections) (IHC (p)), Immunofluorescence (IF), Immunocytochemistry (ICC)

#### Product Details

Immunogen:	Recombinant protein encompassing a sequence within the center region of human GSPT1. The exact sequence is proprietary.
Isotype:	IgG
Cross-Reactivity:	Human, Mouse, Rat
Characteristics:	Rabbit Polyclonal antibody to GSPT1 (eukaryotic peptide chain release factor GTP-binding subunit ERF3A) GSPT1 antibody
Purification:	Purified by antigen-affinity chromatography.

#### Target Details

Target:	GSPT1
---------	-------

## Target Details

---

Alternative Name: G1 to S phase transition 1 ([GSPT1 Products](#))

Molecular Weight: 56 kDa

Gene ID: 2935

UniProt: [P15170](#)

## Application Details

---

Application Notes: WB: 1:500-1:3000. ICC/IF: 1:100-1:1000. IHC-P: 1:100-1:1000. Optimal dilutions/concentrations should be determined by the researcher. Not tested in other applications.

Restrictions: For Research Use only

## Handling

---

Format: Liquid

Concentration: 0.44 mg/mL

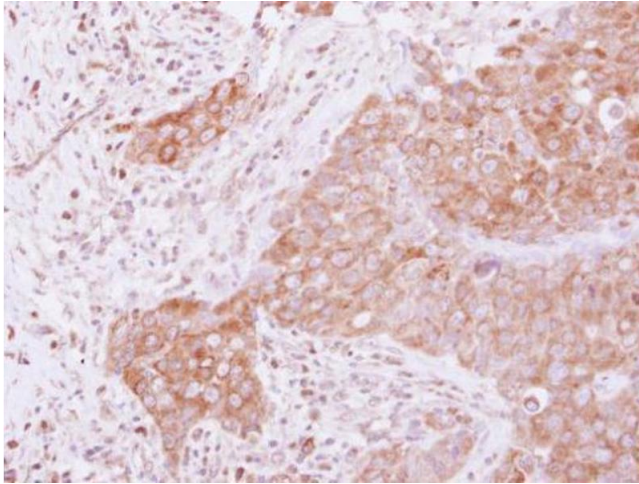
Buffer: 1XPBS pH 7, 1 % BSA, 20 % Glycerol, 0.025 % ProClin 300

Preservative: ProClin

Precaution of Use: This product contains ProClin: a POISONOUS AND HAZARDOUS SUBSTANCE which should be handled by trained staff only.

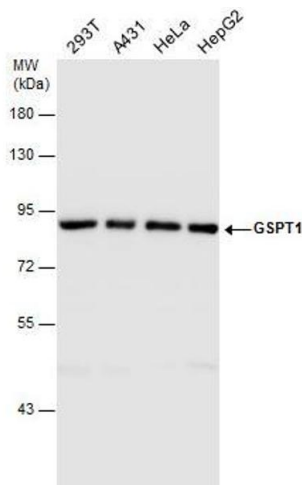
Storage: 4 °C,-20 °C

Storage Comment: Store as concentrated solution. Centrifuge briefly prior to opening vial. For short-term storage (1-2 weeks), store at 4°C. For long-term storage, aliquot and store at -20°C or below. Avoid multiple freeze-thaw cycles.



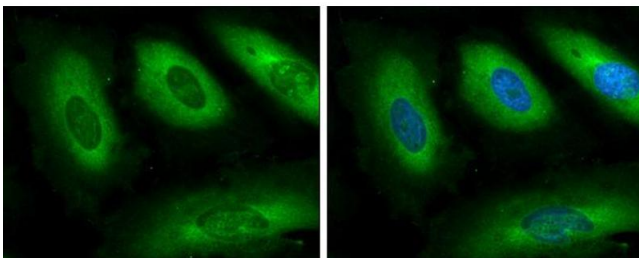
### Immunohistochemistry

**Image 1.** IHC-P Image Immunohistochemical analysis of paraffin-embedded human breast cancer, using GSPT1, antibody at 1:500 dilution.



### Western Blotting

**Image 2.** WB Image GSPT1 antibody detects GSPT1 protein by western blot analysis. Various whole cell extracts (30 µg) were separated by 7.5% SDS-PAGE, and the membrane was blotted with GSPT1 antibody, diluted at 1:1000.



### Immunofluorescence

**Image 3.** ICC/IF Image GSPT1 antibody detects GSPT protein at cytoplasm by immunofluorescent analysis. Sample: HeLa cells were fixed in 4% paraformaldehyde at RT for 15 min. Green: GSPT protein stained by GSPT1 antibody, diluted at 1:500. Blue: Hoechst 33342 staining.