

Datasheet for ABIN2856119
anti-RPS6KA3 antibody (Center)

3 Images

[Go to Product page](#)

Overview

Quantity:	100 µL
Target:	RPS6KA3
Binding Specificity:	Center
Reactivity:	Human, Mouse, Rat
Host:	Rabbit
Clonality:	Polyclonal
Conjugate:	This RPS6KA3 antibody is un-conjugated
Application:	Western Blotting (WB), Immunohistochemistry (Paraffin-embedded Sections) (IHC (p))

Product Details

Immunogen:	Recombinant protein encompassing a sequence within the center region of human RSK2. The exact sequence is proprietary.
Isotype:	IgG
Characteristics:	Rabbit Polyclonal antibody to RSK2 (ribosomal protein S6 kinase, 90 kDa, polypeptide 3) RSK2 antibody
Purification:	Purified by antigen-affinity chromatography.

Target Details

Target:	RPS6KA3
Alternative Name:	RSK2 (RPS6KA3 Products)

Target Details

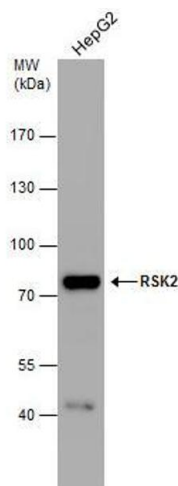
Background:	This gene encodes a member of the RSK (ribosomal S6 kinase) family of serine/threonine kinases. This kinase contains 2 non-identical kinase catalytic domains and phosphorylates various substrates, including members of the mitogen-activated kinase (MAPK) signalling pathway. The activity of this protein has been implicated in controlling cell growth and differentiation. Mutations in this gene have been associated with Coffin-Lowry syndrome (CLS).
Molecular Weight:	84 kDa
Gene ID:	6197
Pathways:	MAPK Signaling , Neurotrophin Signaling Pathway , Activation of Innate immune Response , Toll-Like Receptors Cascades

Application Details

Application Notes:	Suggested dilution Reference IHC (Formalin-fixed paraffin-embedded sections) 1:100-1:1000* Western blot 1:500-1:3000* Not tested in other applications. *Optimal dilutions/concentrations should be determined by the researcher.Suggested dilutionReferenceIHC (Formalin-fixed paraffin-embedded sections)1:100-1:1000* Western blot1:500-1:3000*
Comment:	Positive Control: HepG2
Restrictions:	For Research Use only

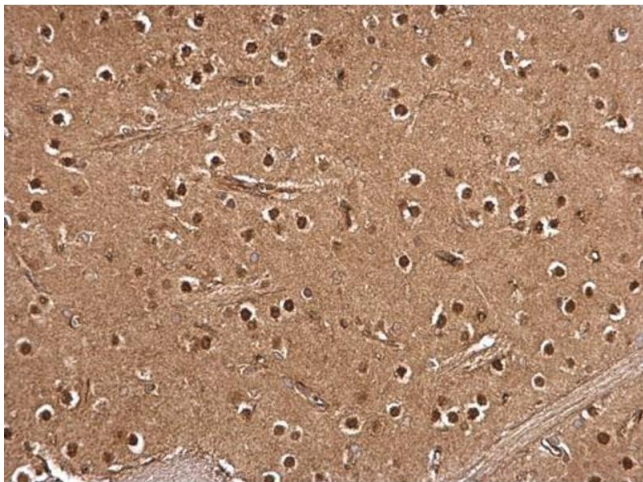
Handling

Format:	Liquid
Concentration:	1.03 mg/mL
Buffer:	1XPBS, 20 % Glycerol (pH 7). 0.01 % Thimerosal was added as a preservative.
Preservative:	Thimerosal (Merthiolate)
Precaution of Use:	This product contains Thimerosal (Merthiolate): a POISONOUS AND HAZARDOUS SUBSTANCE which should be handled by trained staff only.
Storage:	-20 °C
Storage Comment:	Keep as concentrated solution. Aliquot and store at -20°C or below. Avoid multiple freeze-thaw cycles.



Western Blotting

Image 1. WB Image RSK2 antibody detects RSK2 protein by western blot analysis. Whole cell extracts (30 µg) was separated by 7.5% SDS-PAGE, and the membrane was blotted with RSK2 antibody , diluted by 1:1000.



Immunohistochemistry

Image 2. IHC-P Image RSK2 antibody detects RSK2 protein at cytosol and nucleus on rat middle brain by immunohistochemical analysis. Sample: Paraffin-embedded rat middle brain. RSK2 antibody , dilution: 1:500.



Immunohistochemistry

Image 3. IHC-P Image RSK2 antibody detects RSK2 protein at cytosol and nucleus on mouse muscle by immunohistochemical analysis. Sample: Paraffin-embedded mouse muscle. RSK2 antibody , dilution: 1:500.