

Datasheet for ABIN2856122

anti-NCS1 antibody

3 Images

[Go to Product page](#)

Overview

Quantity:	100 µL
Target:	NCS1
Reactivity:	Human
Host:	Rabbit
Clonality:	Polyclonal
Conjugate:	This NCS1 antibody is un-conjugated
Application:	Western Blotting (WB), Immunofluorescence (IF), Immunohistochemistry (Paraffin-embedded Sections) (IHC (p)), Immunocytochemistry (ICC)

Product Details

Immunogen:	Recombinant protein encompassing a sequence within the center region of human NCS1. The exact sequence is proprietary.
Isotype:	IgG
Cross-Reactivity:	Human, Mouse
Characteristics:	Rabbit Polyclonal antibody to NCS1 (neuronal calcium sensor 1) NCS1 antibody
Purification:	Purified by antigen-affinity chromatography.

Target Details

Target:	NCS1
Alternative Name:	neuronal calcium sensor 1 (NCS1 Products)

Target Details

Background: This gene is a member of the neuronal calcium sensor gene family, which encode calcium-binding proteins expressed predominantly in neurons. The protein encoded by this gene regulates G protein-coupled receptor phosphorylation in a calcium-dependent manner and can substitute for calmodulin. The protein is associated with secretory granules and modulates synaptic transmission and synaptic plasticity. Multiple transcript variants encoding different isoforms have been found for this gene.

Cellular Localization: Golgi apparatus , Golgi stack membrane, Peripheral membrane protein

Molecular Weight: 22 kDa

Gene ID: 23413

UniProt: [P62166](#)

Application Details

Application Notes: WB: 1:100-1:1000. ICC/IF: 1:100-1:1000. IHC-P: 1:100-1:1000. Optimal dilutions/concentrations should be determined by the researcher. Not tested in other applications.

Comment: Positive Control: A431 , HepG2

Restrictions: For Research Use only

Handling

Format: Liquid

Concentration: 0.35 mg/mL

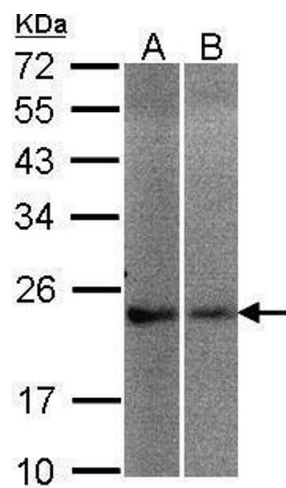
Buffer: 0.1M Tris-Glycine (pH 7), 10 % Glycerol, 0.01 % Thimerosal

Preservative: Thimerosal (Merthiolate)

Precaution of Use: This product contains Thimerosal (Merthiolate): a POISONOUS AND HAZARDOUS SUBSTANCE which should be handled by trained staff only.

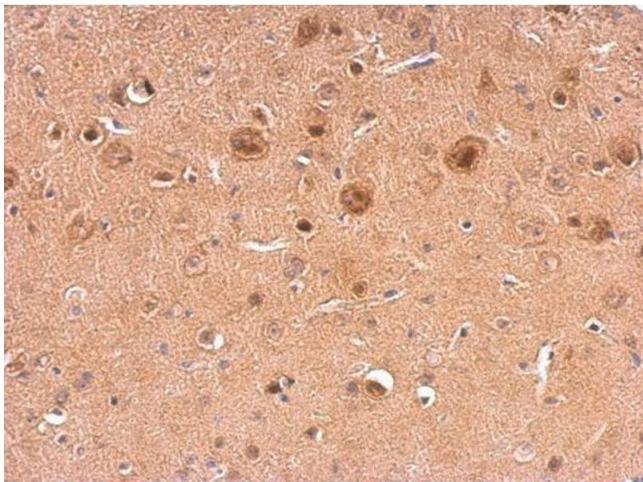
Storage: 4 °C,-20 °C

Storage Comment: Store as concentrated solution. Centrifuge briefly prior to opening vial. For short-term storage (1-2 weeks), store at 4°C. For long-term storage, aliquot and store at -20°C or below. Avoid multiple freeze-thaw cycles.



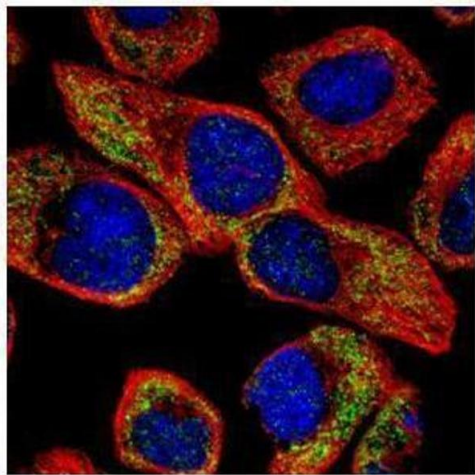
Western Blotting

Image 1. WB Image Sample(30 µg of whole cell lysate)
A:A431, B:Hep G2, 12% SDS PAGE antibody diluted at 1:200



Immunohistochemistry

Image 2. IHC-P Image NCS1 antibody detects NCS1 protein at on mouse fore brain by immunohistochemical analysis.
Sample: Paraffin-embedded mouse fore brain. NCS1 antibody , dilution: 1:500.



Immunofluorescence

Image 3. ICC/IF Image Confocal immunofluorescence analysis (Olympus FV10i) of methanol-fixed A431, using NCS1, antibody (Green) at 1:100 dilution. Alpha-tubulin filaments were labeled with (Red) at 1:500.