

Datasheet for ABIN2856123

anti-FABP6 antibody**2** Images[Go to Product page](#)

Overview

Quantity:	100 µL
Target:	FABP6
Reactivity:	Human
Host:	Rabbit
Clonality:	Polyclonal
Conjugate:	This FABP6 antibody is un-conjugated
Application:	Western Blotting (WB), Immunohistochemistry (Paraffin-embedded Sections) (IHC (p))

Product Details

Immunogen:	Recombinant protein encompassing a sequence within the center region of human ILBP. The exact sequence is proprietary.
Isotype:	IgG
Cross-Reactivity:	Human
Characteristics:	Rabbit polyclonal antibody to ILBP (fatty acid binding protein 6, ileal (gastrotropin)) ILBP antibody
Purification:	Purified by antigen-affinity chromatography.

Target Details

Target:	FABP6
Alternative Name:	fatty acid binding protein 6 (FABP6 Products)

Target Details

Background: This gene encodes the ileal fatty acid binding protein. Fatty acid binding proteins are a family of small, highly conserved, cytoplasmic proteins that bind long-chain fatty acids and other hydrophobic ligands. FABP6 and FABP1 (the liver fatty acid binding protein) are also able to bind bile acids. It is thought that FABPs roles include fatty acid uptake, transport, and metabolism. Transcript variants generated by alternate transcription promoters and/or alternate splicing have been found for this gene.

Cellular Localization: Cytoplasm

Molecular Weight: 14 kDa

Gene ID: 2172

UniProt: [P51161](#)

Application Details

Application Notes: WB: 1:500-1:3000. IHC-P: 1:100-1:1000. Optimal dilutions/concentrations should be determined by the researcher. Not tested in other applications.

Comment: Positive Control: HeLaS3 , HepG2

Restrictions: For Research Use only

Handling

Format: Liquid

Concentration: 1 mg/mL

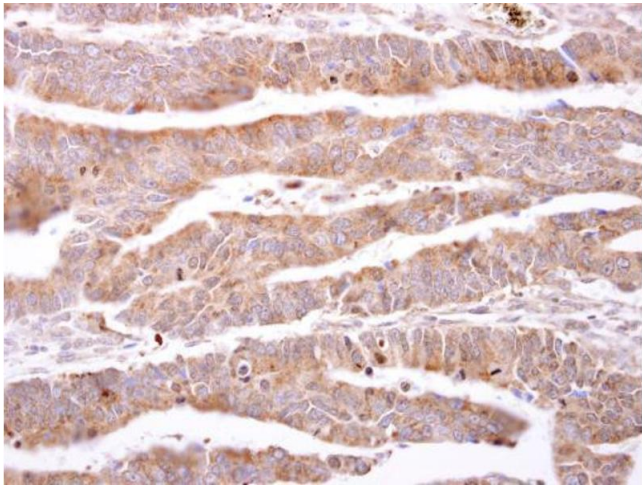
Buffer: 0.1M Tris-Glycine (pH 7), 10 % Glycerol, 0.01 % Thimerosal

Preservative: Thimerosal (Merthiolate)

Precaution of Use: This product contains Thimerosal (Merthiolate): a POISONOUS AND HAZARDOUS SUBSTANCE which should be handled by trained staff only.

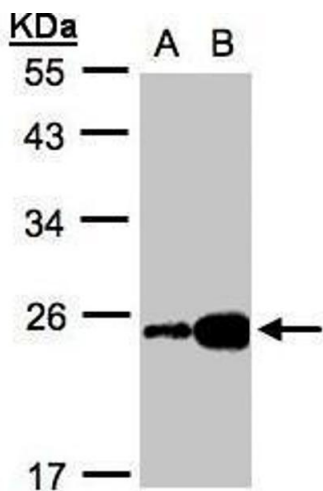
Storage: 4 °C,-20 °C

Storage Comment: Store as concentrated solution. Centrifuge briefly prior to opening vial. For short-term storage (1-2 weeks), store at 4°C. For long-term storage, aliquot and store at -20°C or below. Avoid multiple freeze-thaw cycles.



Immunohistochemistry

Image 1. IHC-P Image ILBP antibody detects ILBP protein at cytosol on human colon carcinoma by immunohistochemical analysis. Sample: Paraffin-embedded human colon carcinoma. ILBP antibody , dilution: 1:500.



Western Blotting

Image 2. WB Image Sample(30 ug whole cell lysate) A:HeLa S3, B:Hep G2 , 12% SDS PAGE antibody diluted at 1:1000