

Datasheet for ABIN2856126

anti-Cytidine Monophosphate (UMP-CMP) Kinase 1, Cytosolic (CMPK1) (Center) antibody[Go to Product page](#)**3** Images

Overview

Quantity:	100 µL
Target:	Cytidine Monophosphate (UMP-CMP) Kinase 1, Cytosolic (CMPK1)
Binding Specificity:	Center
Reactivity:	Human, Mouse
Host:	Rabbit
Clonality:	Polyclonal
Conjugate:	Un-conjugated
Application:	Western Blotting (WB), Immunofluorescence (IF), Immunocytochemistry (ICC)

Product Details

Immunogen:	Recombinant protein encompassing a sequence within the center region of human CMPK1. The exact sequence is proprietary.
Isotype:	IgG
Cross-Reactivity:	Rhesus Monkey
Cross-Reactivity (Details):	Rhesus Monkey (100 %)
Characteristics:	Rabbit Polyclonal antibody to CMPK1 (cytidine monophosphate (UMP-CMP) kinase 1, cytosolic) CMPK1 antibody [N1C3]
Purification:	Purified by antigen-affinity chromatography.

Target Details

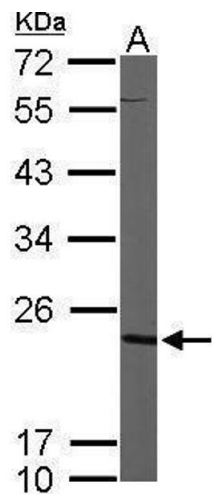
Target:	Cytidine Monophosphate (UMP-CMP) Kinase 1, Cytosolic (CMPK1)
Alternative Name:	CMPK1 (CMPK1 Products)
Background:	<p>Uridine monophosphate (UMP)/cytidine monophosphate (CMP) kinase (EC 2.7.4.4) catalyzes the phosphoryl transfer from ATP to UMP, CMP, and deoxy-CMP (dCMP), resulting in the formation of ADP and the corresponding nucleoside diphosphate. These nucleoside diphosphates are required for cellular nucleic acid synthesis (Liou et al., 2002 [PubMed 11912132]).[supplied by OMIM]</p> <p>Cellular Localization: Nucleus , Cytoplasm</p>
Molecular Weight:	22 kDa
Gene ID:	51727
Pathways:	Nucleotide Phosphorylation , Ribonucleoside Biosynthetic Process

Application Details

Application Notes:	Suggested dilution Reference ICC/IF 1:100-1:1000* Western blot 1:500-1:3000* Not tested in other applications. *Optimal dilutions/concentrations should be determined by the researcher.Suggested dilutionReferenceICC/IF1:100-1:1000* Western blot1:500-1:3000*
Comment:	Positive Control: Raji , mouse brain
Restrictions:	For Research Use only

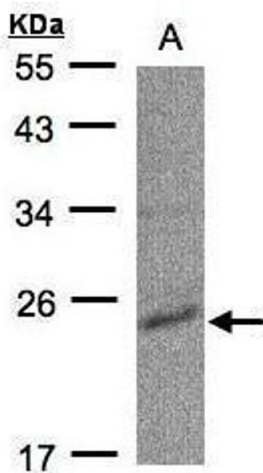
Handling

Format:	Liquid
Concentration:	1 mg/mL
Buffer:	0.1M Tris, 0.1M Glycine, 10 % Glycerol (pH 7). 0.01 % Thimerosal was added as a preservative.
Preservative:	Thimerosal (Merthiolate)
Precaution of Use:	This product contains Thimerosal (Merthiolate): a POISONOUS AND HAZARDOUS SUBSTANCE which should be handled by trained staff only.
Storage:	-20 °C
Storage Comment:	Keep as concentrated solution. Aliquot and store at -20°C or below. Avoid multiple freeze-thaw cycles.



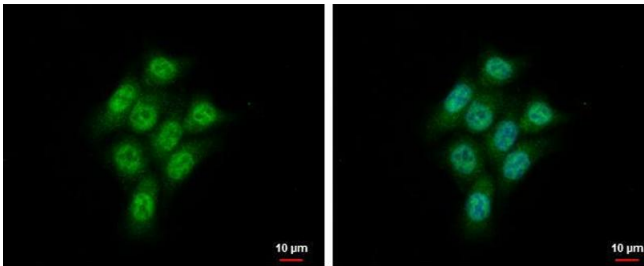
Western Blotting

Image 1. WB Image Sample (50 ug of whole cell lysate) A: Mouse brain 12% SDS PAGE antibody diluted at 1:1000



Western Blotting

Image 2. WB Image Sample(30 ug whole cell lysate) A:Raji , 12% SDS PAGE antibody diluted at 1:500



Immunofluorescence

Image 3. ICC/IF Image CMPK1 antibody [N1C3] detects CMPK1 protein at cytoplasm and nucleus by immunofluorescent analysis. Sample: HCT 116 cells were fixed in 4% paraformaldehyde at RT for 15 min. Green: CMPK1 protein stained by CMPK1 antibody [N1C3] , diluted at 1:500. Blue: Hoechst 33342 staining. Scale bar = 10 μm.