

Datasheet for ABIN2856127

**anti-MIPEP antibody****3** Images[Go to Product page](#)

## Overview

Quantity:	100 µL
Target:	MIPEP
Reactivity:	Human
Host:	Rabbit
Clonality:	Polyclonal
Conjugate:	This MIPEP antibody is un-conjugated
Application:	Western Blotting (WB), Immunohistochemistry (Paraffin-embedded Sections) (IHC (p)), Immunofluorescence (IF), Immunocytochemistry (ICC)

## Product Details

Immunogen:	Recombinant protein encompassing a sequence within the center region of human MIPEP. The exact sequence is proprietary.
Isotype:	IgG
Cross-Reactivity:	Human
Characteristics:	Rabbit Polyclonal antibody to MIPEP (mitochondrial intermediate peptidase) MIPEP antibody [N2C1], Internal
Purification:	Purified by antigen-affinity chromatography.

## Target Details

Target:	MIPEP
Alternative Name:	mitochondrial intermediate peptidase ( <a href="#">MIPEP Products</a> )

## Target Details

**Background:** The product of this gene performs the final step in processing a specific class of nuclear-encoded proteins targeted to the mitochondrial matrix or inner membrane. This protein is primarily involved in the maturation of oxidative phosphorylation (OXPHOS)-related proteins. This gene may contribute to the functional effects of frataxin deficiency and the clinical manifestations of Friedreich ataxia.

Cellular Localization: Mitochondrion matrix

**Molecular Weight:** 81 kDa

**Gene ID:** 4285

**UniProt:** [Q99797](#)

## Application Details

**Application Notes:** WB: 1:500-1:3000. ICC/IF: 1:100-1:1000. IHC-P: 1:100-1:1000. Optimal dilutions/concentrations should be determined by the researcher. Not tested in other applications.

**Comment:** Positive Control: A431

**Restrictions:** For Research Use only

## Handling

**Format:** Liquid

**Concentration:** 0.53 mg/mL

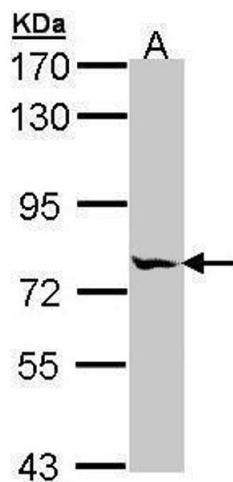
**Buffer:** 0.1M Tris-Glycine ( pH 7), 10 % Glycerol, 0.01 % Thimerosal

**Preservative:** Thimerosal (Merthiolate)

**Precaution of Use:** This product contains Thimerosal (Merthiolate): a POISONOUS AND HAZARDOUS SUBSTANCE which should be handled by trained staff only.

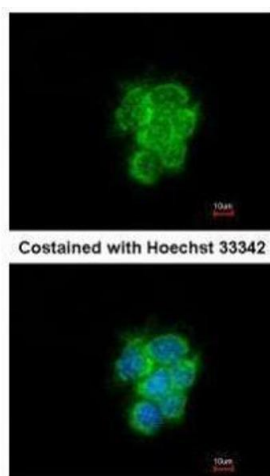
**Storage:** 4 °C, -20 °C

**Storage Comment:** Store as concentrated solution. Centrifuge briefly prior to opening vial. For short-term storage (1-2 weeks), store at 4°C. For long-term storage, aliquot and store at -20°C or below. Avoid multiple freeze-thaw cycles.



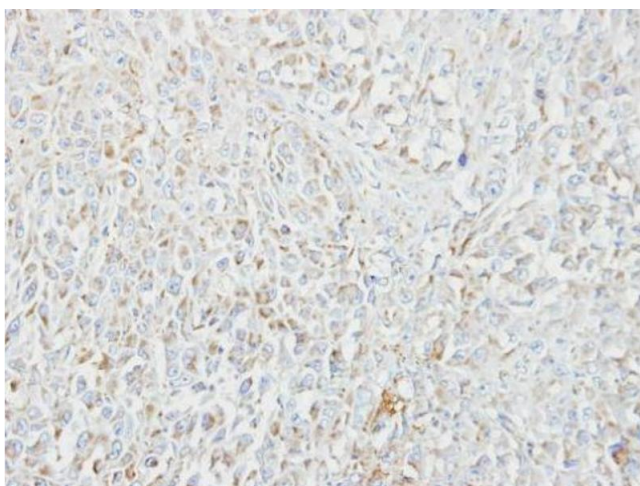
#### Western Blotting

**Image 1.** WB Image Sample (30 ug of whole cell lysate) A: A431, 7.5% SDS PAGE antibody diluted at 1:1000



#### Immunofluorescence

**Image 2.** ICC/IF Image Immunofluorescence analysis of methanol-fixed A431, using MIPEP, antibody at 1:200 dilution.



#### Immunohistochemistry

**Image 3.** IHC-P Image Immunohistochemical analysis of paraffin-embedded CL1-5 xenograft, using MIPEP, antibody at 1:100 dilution.