

Datasheet for ABIN2856128  
**anti-R-Ras antibody (Center)**

## 3 Images

[Go to Product page](#)

## Overview

Quantity:	100 µL
Target:	R-Ras
Binding Specificity:	Center
Reactivity:	Human, Mouse
Host:	Rabbit
Clonality:	Polyclonal
Conjugate:	This R-Ras antibody is un-conjugated
Application:	Western Blotting (WB), Immunohistochemistry (Paraffin-embedded Sections) (IHC (p))

## Product Details

Immunogen:	Recombinant protein encompassing a sequence within the center region of human RRAS. The exact sequence is proprietary.
Isotype:	IgG
Cross-Reactivity:	Cow (Bovine), Rat (Rattus)
Cross-Reactivity (Details):	Rat (91 %), Bovine (96 %)
Characteristics:	Rabbit Polyclonal antibody to RRAS (related RAS viral (r-ras) oncogene homolog) RRAS antibody [N1C3]
Purification:	Purified by antigen-affinity chromatography.

## Target Details

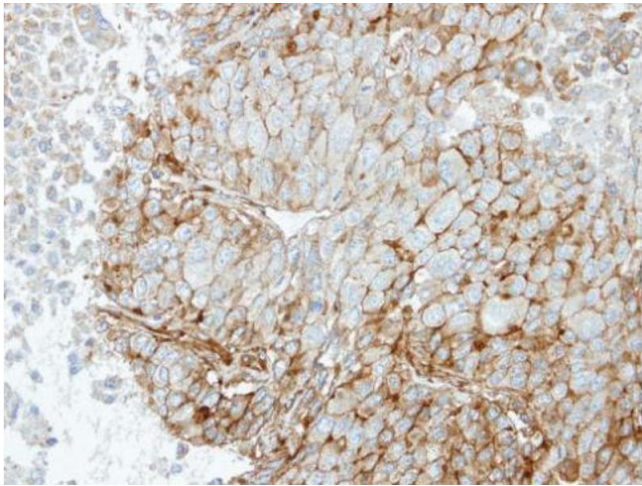
Target:	R-Ras
Alternative Name:	RRAS ( <a href="#">R-Ras Products</a> )
Background:	Regulates the organization of the actin cytoskeleton.  Cellular Localization: Cell membrane, Lipid-anchor, Cytoplasmic side (By similarity)
Molecular Weight:	23 kDa
Gene ID:	6237

## Application Details

Application Notes:	Suggested dilution Reference IHC (Formalin-fixed paraffin-embedded sections) 1:100-1:1000* Western blot 1:500-1:3000* Not tested in other applications. *Optimal dilutions/concentrations should be determined by the researcher.Suggested dilutionReferenceIHC (Formalin-fixed paraffin-embedded sections)1:100-1:1000* Western blot1:500-1:3000*
Comment:	Positive Control: H1299 , HeLaS3 , Molt-4 , Raji
Restrictions:	For Research Use only

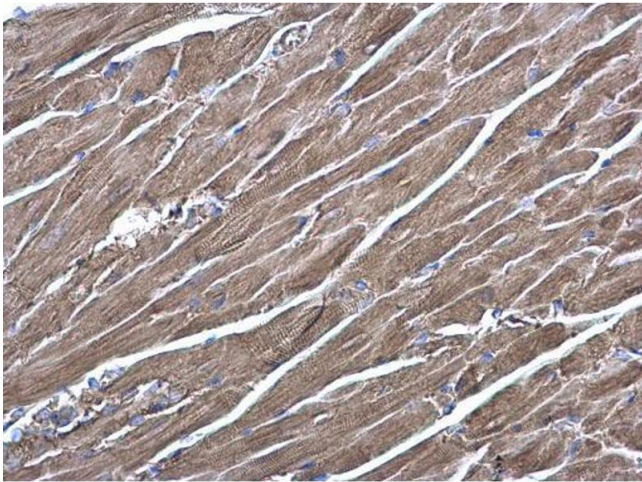
## Handling

Format:	Liquid
Concentration:	0.63 mg/mL
Buffer:	0.1M Tris, 0.1M Glycine, 10 % Glycerol ( pH 7). 0.01 % Thimerosal was added as a preservative.
Preservative:	Thimerosal (Merthiolate)
Precaution of Use:	This product contains Thimerosal (Merthiolate): a POISONOUS AND HAZARDOUS SUBSTANCE which should be handled by trained staff only.
Storage:	-20 °C
Storage Comment:	Keep as concentrated solution. Aliquot and store at -20°C or below. Avoid multiple freeze-thaw cycles.



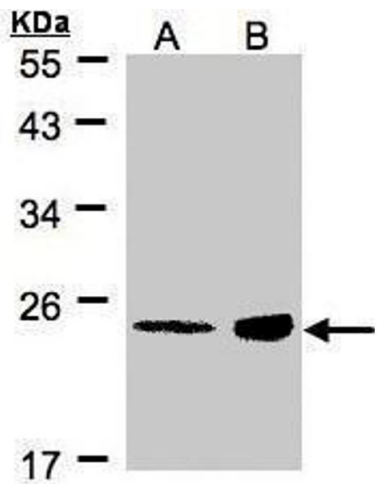
#### Immunohistochemistry

**Image 1.** IHC-P Image Immunohistochemical analysis of paraffin-embedded Hep3B xenograft, using RRAS, antibody at 1:100 dilution.



#### Immunohistochemistry

**Image 2.** IHC-P Image RRAS antibody [N1C3] detects RRAS protein at cytoplasm on mouse heart by immunohistochemical analysis. Sample: Paraffin-embedded mouse heart. RRAS antibody [N1C3] , diluted at 1:500.



#### Western Blotting

**Image 3.** WB Image Sample(30 µg of whole cell lysate) A:MOLT4, B:Raji, 12% SDS PAGE antibody diluted at 1:500